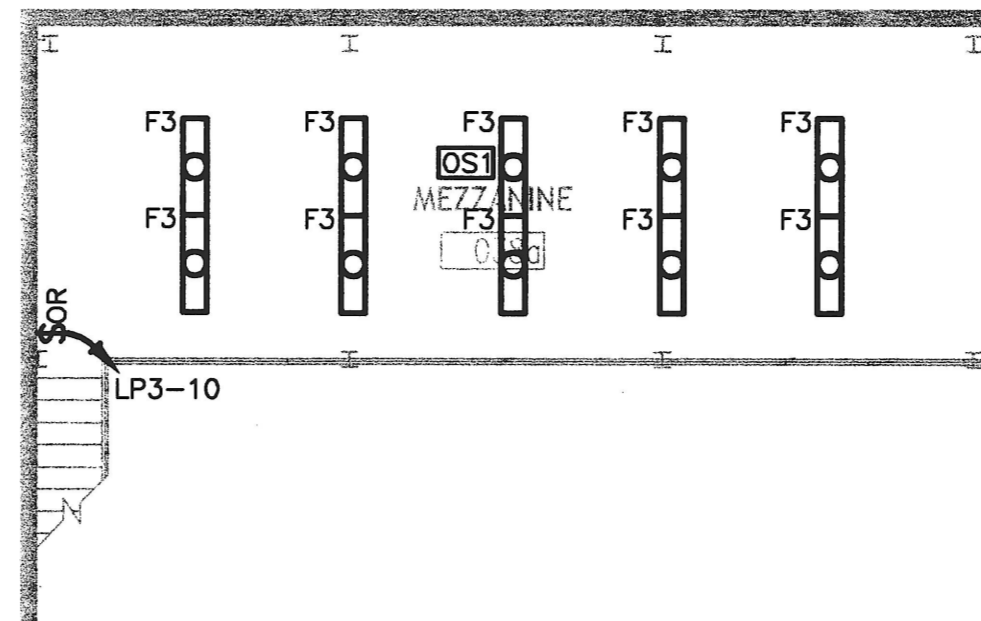


**TYPICAL OCCUPANCY SENSOR WIRING FOR MULTIPLE SWITCH CONTROL**  
NO SCALE



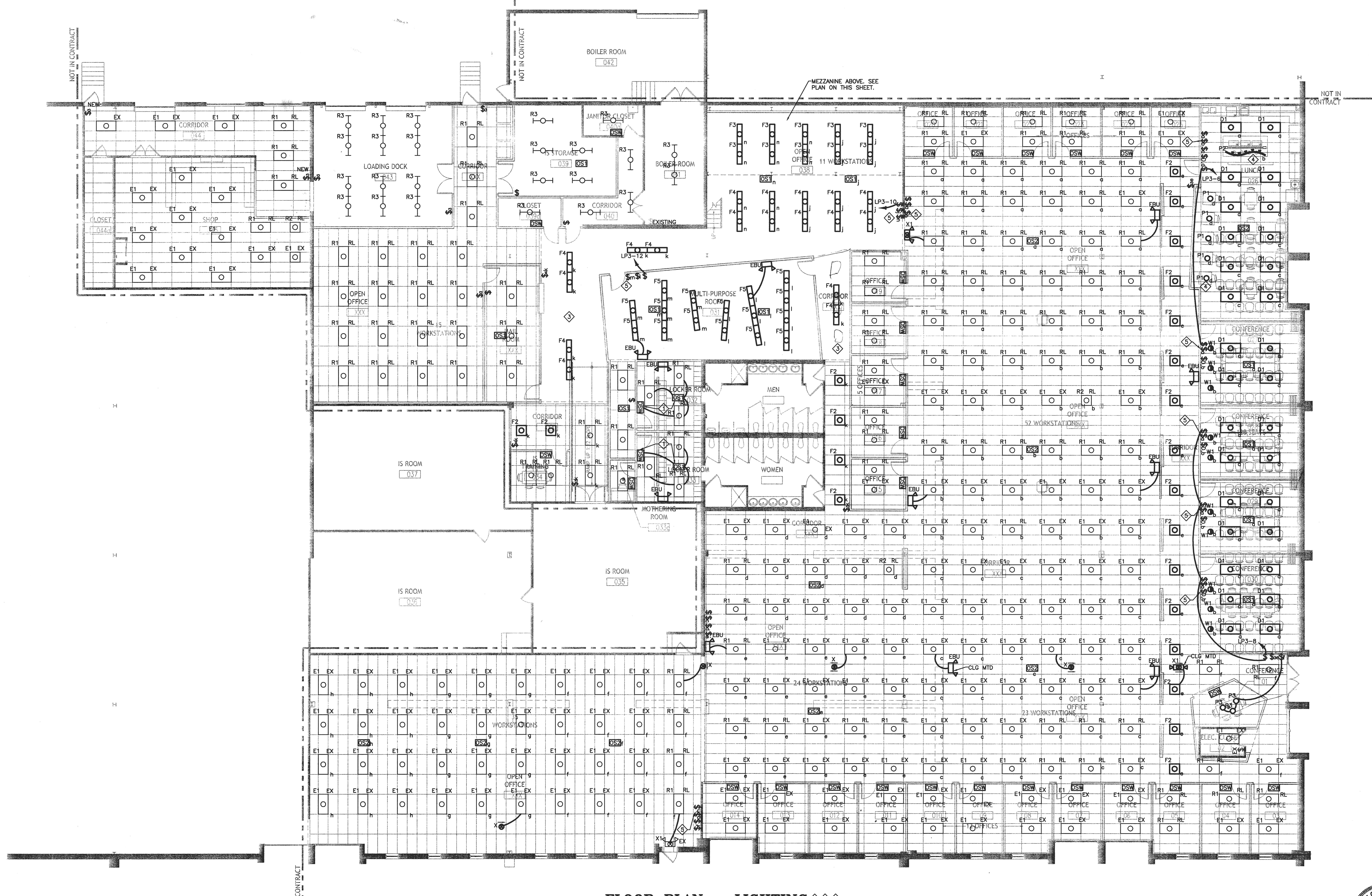
**MEZZANINE - LIGHTING**  
SCALE: 1/8" = 1'-0"

**REFERENCED NOTES:**

- ◇ OCCUPANCY SENSORS IN LOCKER ROOMS SHALL WORK IN SYNC TO TURN ON ALL LIGHTS IN LOCKER ROOM. THE WALL OCCUPANCY SWITCH SHALL ACT AS THE OVERRIDE.
- ◇ ALL EXIT SIGNS AND EMERGENCY LIGHTING SHALL BE WIRED AHEAD OF ANY SWITCH.
- ◇ CONNECT EXISTING AND RELOCATED LIGHTING TO EXISTING LIGHTING CIRCUIT IN SPACE. UNLESS NOTED OTHERWISE, WHERE OCCUPANCY SENSORS ARE SHOWN, THEY SHALL BE CONNECTED ALONG WITH THE WALL SWITCH AS INDICATED ON THE NOTES ON SHEET E000.
- ◇ LIGHT FIXTURES P1 & P2 MAY REQUIRE LOW VOLTAGE TRANSFORMER.
- ◇ WHERE POSSIBLE, GANG MULTIPLE LIGHT SWITCHES UNDER SAME COVER PLATE. FOR TYPICAL WIRING, REFER TO DETAIL ON THIS SHEET.

**DEMOLITION NOTES:**

- 1. DISCONNECT AND REMOVE ALL LIGHTING FIXTURES, SWITCHES AND ASSOCIATED CONDUIT & WIRING UNLESS NOTED OTHERWISE.



**FLOOR PLAN - LIGHTING**  
SCALE: 1/8" = 1'-0"

DESIGN COLLECTIVE, INC. ALL RIGHTS RESERVED

ISSUED FOR	DATE
BID SET	07.07.2011
PERMIT	07.15.2011

**CENTURY ENGINEERING**  
CONSULTING ENGINEERS - PLANNERS  
10710 GRIFFIN ROAD  
PLANT VALLEY, MD 21081  
Phone: 443-588-2400 Fax: 443-588-2401

OWNER / DEVELOPER  
Johns Hopkins Healthcare  
6704 Curtis Court  
Glen Burnie, MD 21060

PROJECT NAME  
**Johns Hopkins Healthcare Masterplan**

PROJECT ADDRESS  
6701 Curtis Court  
Suite D  
Glen Burnie, MD 21060  
PROJECT MANAGEMENT  
DCI Project No. 459-10-01

SEAL  
Professional Certification. I hereby certify that these documents were prepared or approved by me, and that I am a duly licensed professional engineer under the laws of the State of Maryland, License No. 21805, Expiration Date: 12-11-2011

SHEET TITLE  
**FLOOR PLAN - LIGHTING**

SCALE  
AS SHOWN  
SHEET NUMBER  
**E100**

