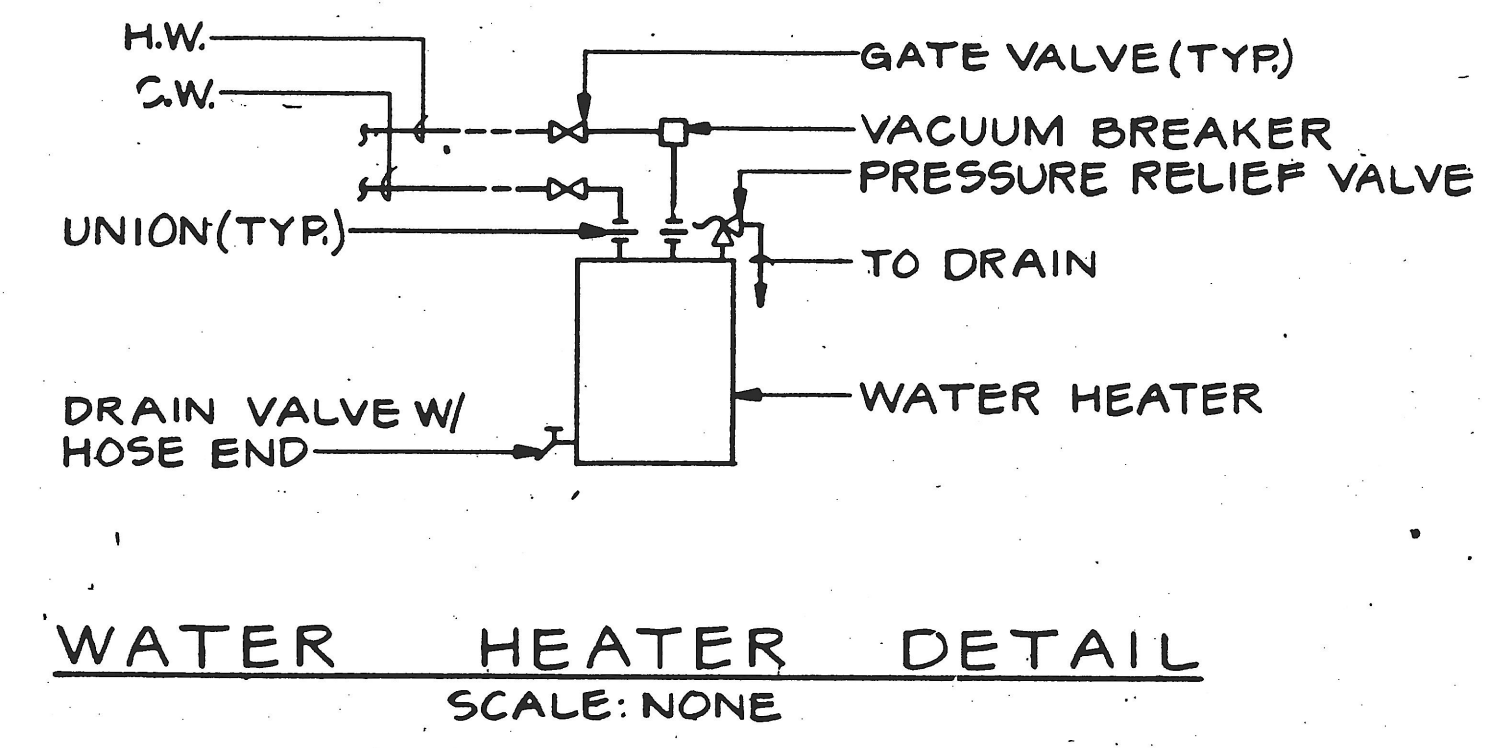
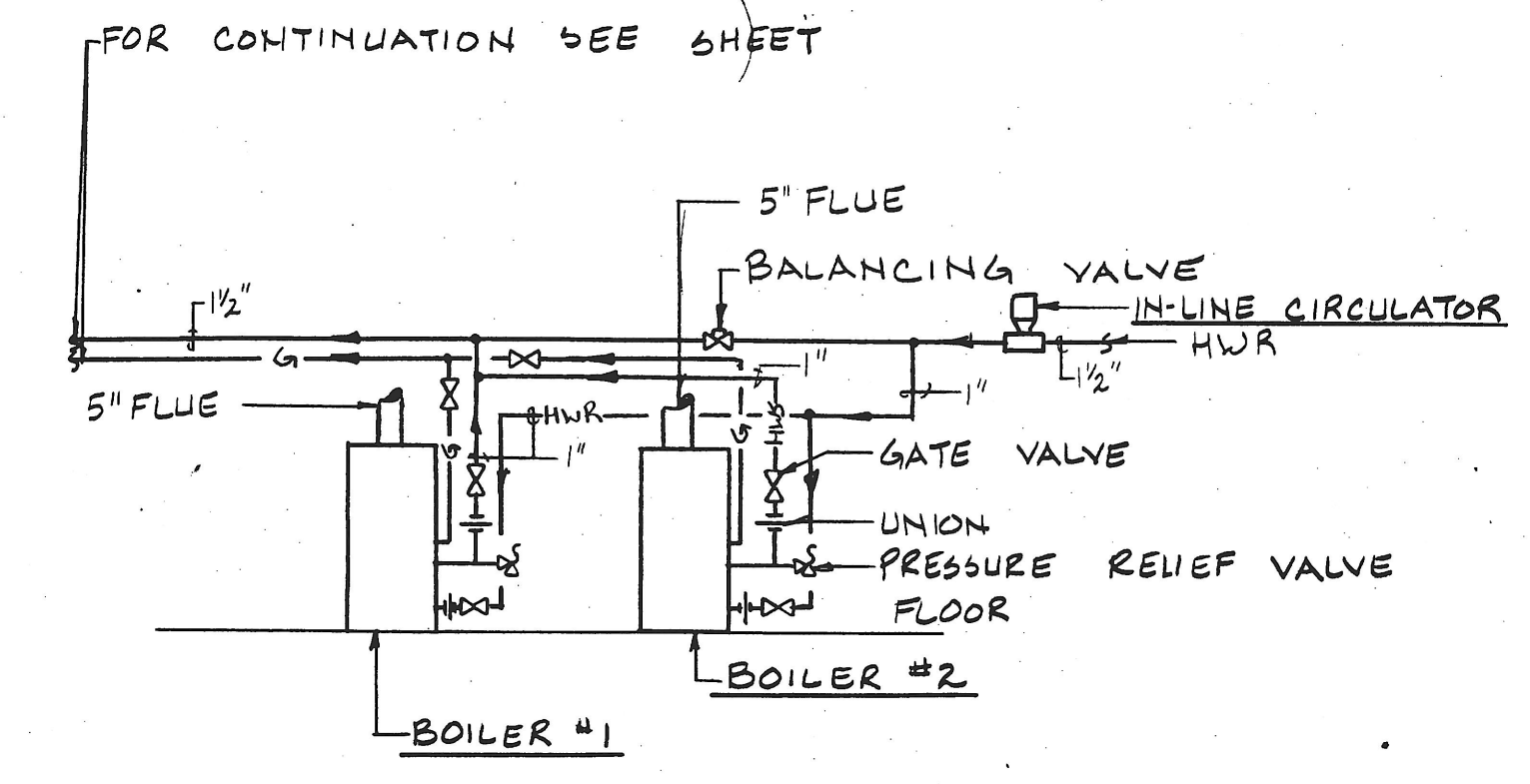


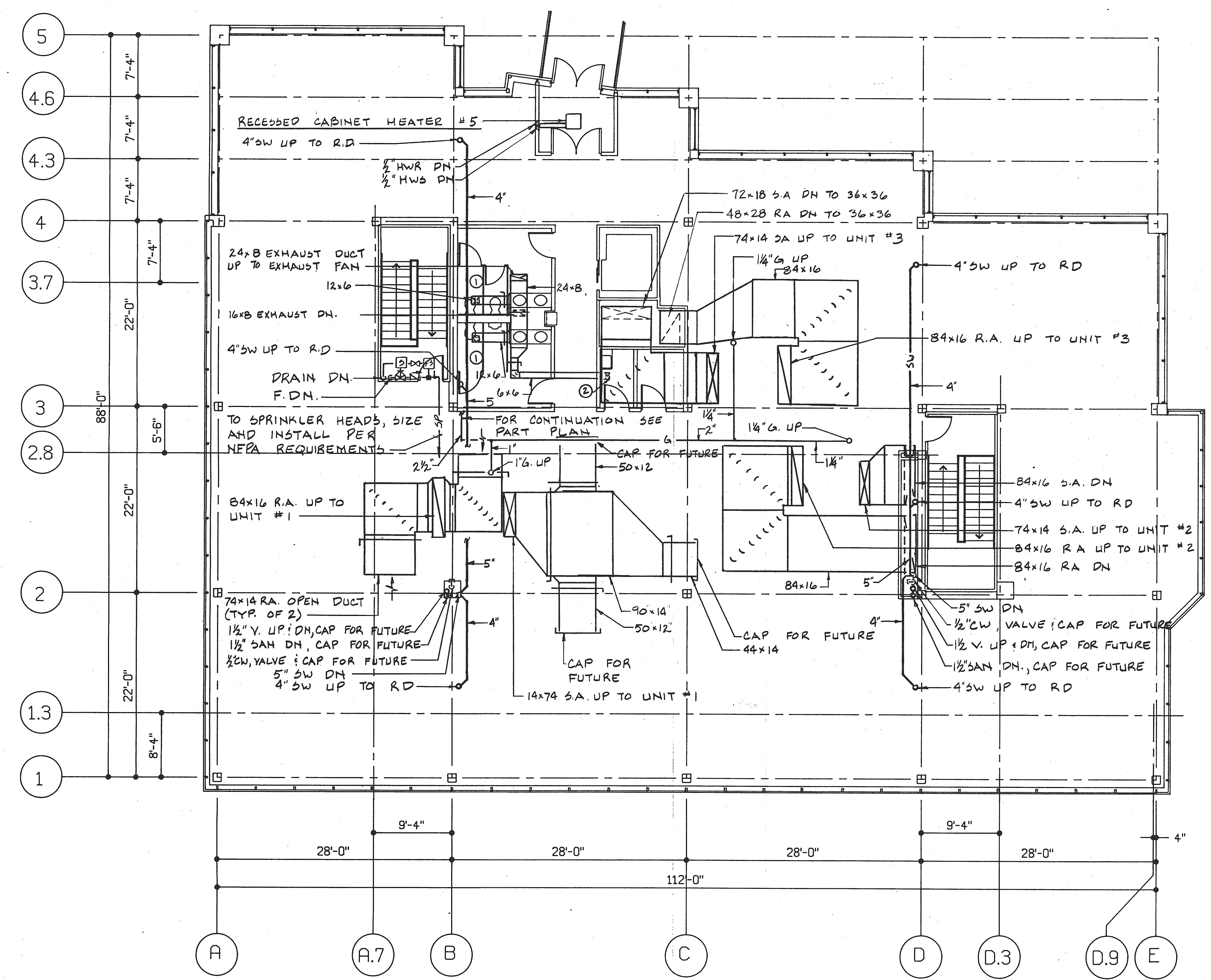
SECOND FLOOR TOILET ROOM-PART PLAN
SCALE: 1/8" = 1'-0"



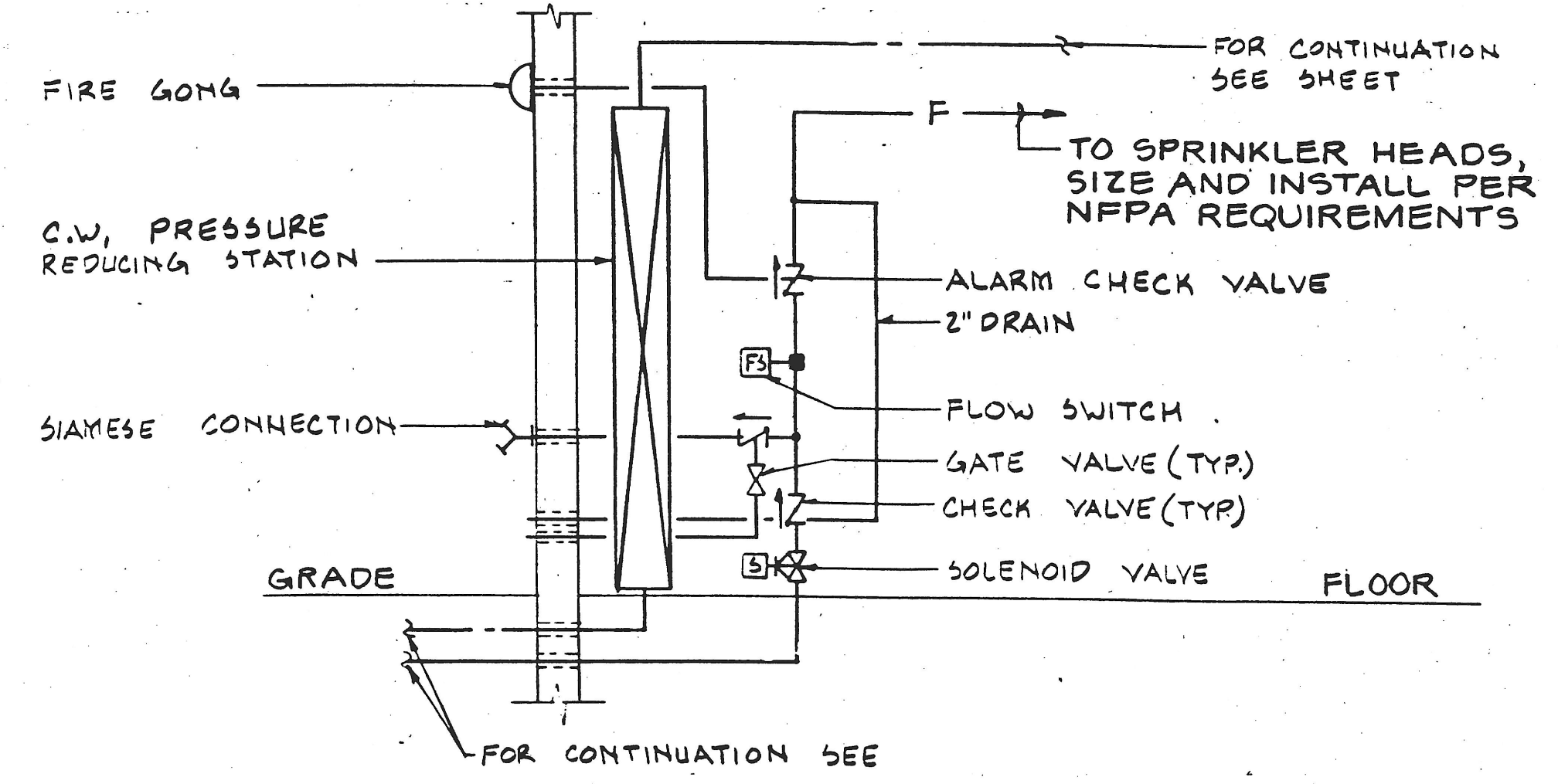
NOTE: WATER HEATER - PROVIDE STEEL PLATE & ATTACH TO WALL IN AN APPROVED MANNER. SECURE LEGS OF WATER HEATER TO PLATE. MOUNT MIN. 4'-0" A.F.F.



BOILER HEATING SYSTEM SCHEMATIC
SCALE: NONE



MECHANICAL SECOND FLOOR PLAN
SCALE: 1/8" = 1'-0"



DOMESTIC WATER AND FIRE SERVICE SCHEMATIC
SCALE: NONE

EQUIPMENT CAPACITY SCHEDULE

- HVAC UNIT #1 AND #2 - TRANE MODEL SFHB250; 25 TONS; 10,500 CFM @ 1" E.S.P.; 200 VOLT/60 HERTZ/3 PHASE; GAS HEAT; HIGH HEAT 470 MBH INPUT
- HVAC UNIT #3 - TRANE MODEL SFHB200; 20 TONS; 9000 CFM @ 1" E.S.P.; 200 VOLT/60 HERTZ/3 PHASE; GAS HEAT; HIGH HEAT 470 MBH INPUT
- BOILER #1 AND #2 - AMT HEATMAKER MODEL 130 H; 130 MBH INPUT; HEATING OUTPUT 107 MBH
- RECESSED CABINET HEATERS #1, #2, #3, #4, #5 - TRANE MODEL E46AO O2; 200 CFM; 17.6 MBH; 1.5 GPM; MOTOR G3TWPC; 120 VOLTS/60 HERTZ/1 PHASE; 1/60 HP
- WALL FIN - TRANE MODEL 4E; WALL MOUNTED; 200 EWT; 180 LWT; 1010 BTUH/FT OF ELEMENT
- EXHAUST FAN - PENN VENTILATOR "DOMEX" MODEL #BT45; 1700 CFM @ .25" S.P.; 1/4 HP; 1140 RPM
- WATER HEATER #1, #2, AND #3 - LOCHINVAR MODEL JRC-012-E; 12 GAL CAP; 1500 WATTS
- ELEVATOR SUMP PUMP - 10 GPM 18 HEAD FEET W.G.; 1/4 HP; 120V/1 PHASE; 1750 RPM
- ELEVATOR MACHINE EXHAUST FAN - PENN VENTILATOR MODEL Z10; 300 CFM @ .25" S.P.; 239 MAX WATTS INPUT; 1050 RPM
- IN-LINE CIRCULATOR - TACO MODEL 1611; 1/3 HP @ 17' OF HEAD

KIBART, INC.
MECHANICAL ELECTRICAL ENGINEERS
698 FAIRMOUNT AVENUE
TOWSON, MARYLAND 21204
(301) 494-1111

LPJ, INC.
STRUCTURAL ENGINEERS
16 WEST 25th STREET
BALTIMORE, MARYLAND 21218
(301) 366-7800

Lapicki-Smith
ASSOCIATES, P.A.

THE PROFESSIONAL CENTER
211 WEST FAYETTE STREET
BALTIMORE, MARYLAND 21201
(301) 685-4900

project no. 86.30

1312 BELLONA AVENUE
LUTHERVILLE, MARYLAND

ZINK DEVELOPMENT COMPANY
1927 YORK ROAD
TIMONIUM, MARYLAND 21093

drawing title
SECOND FLOOR
MECHANICAL

date 1-26-87 drawing no. M-3

M3	M3
W3	W3