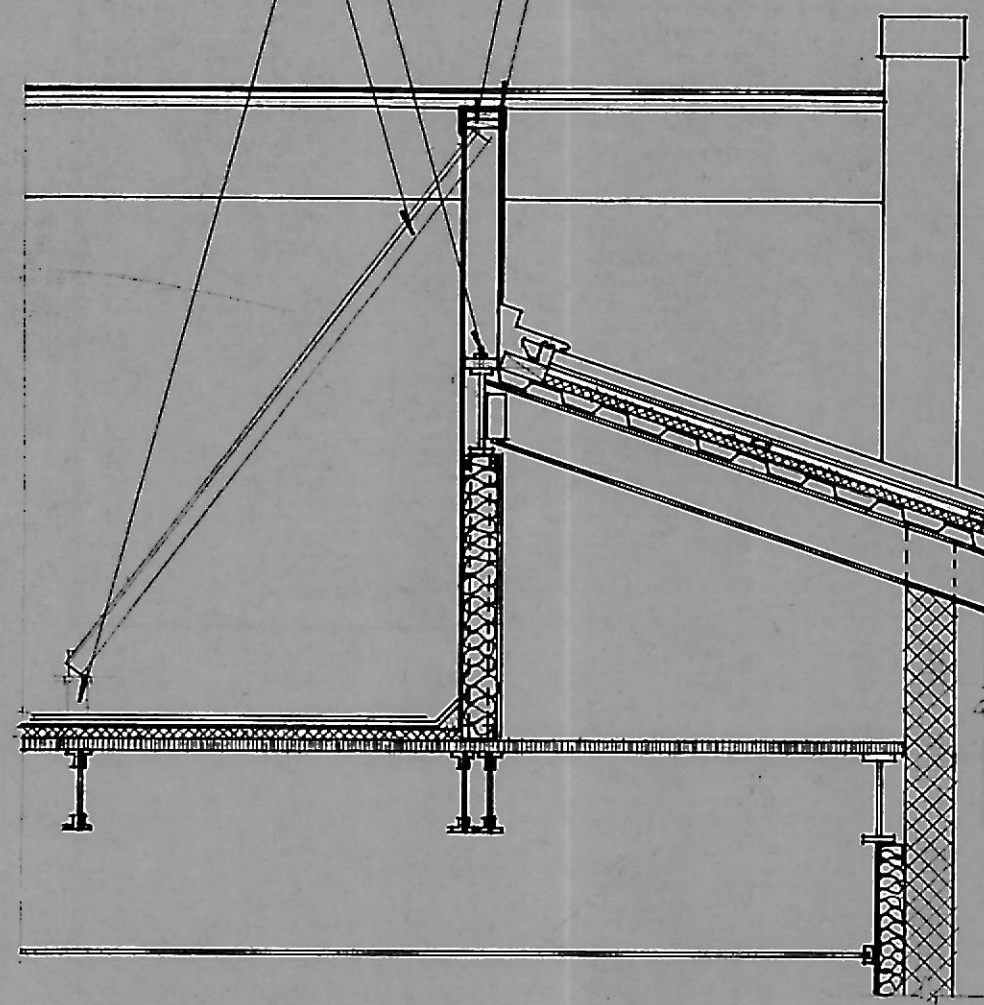
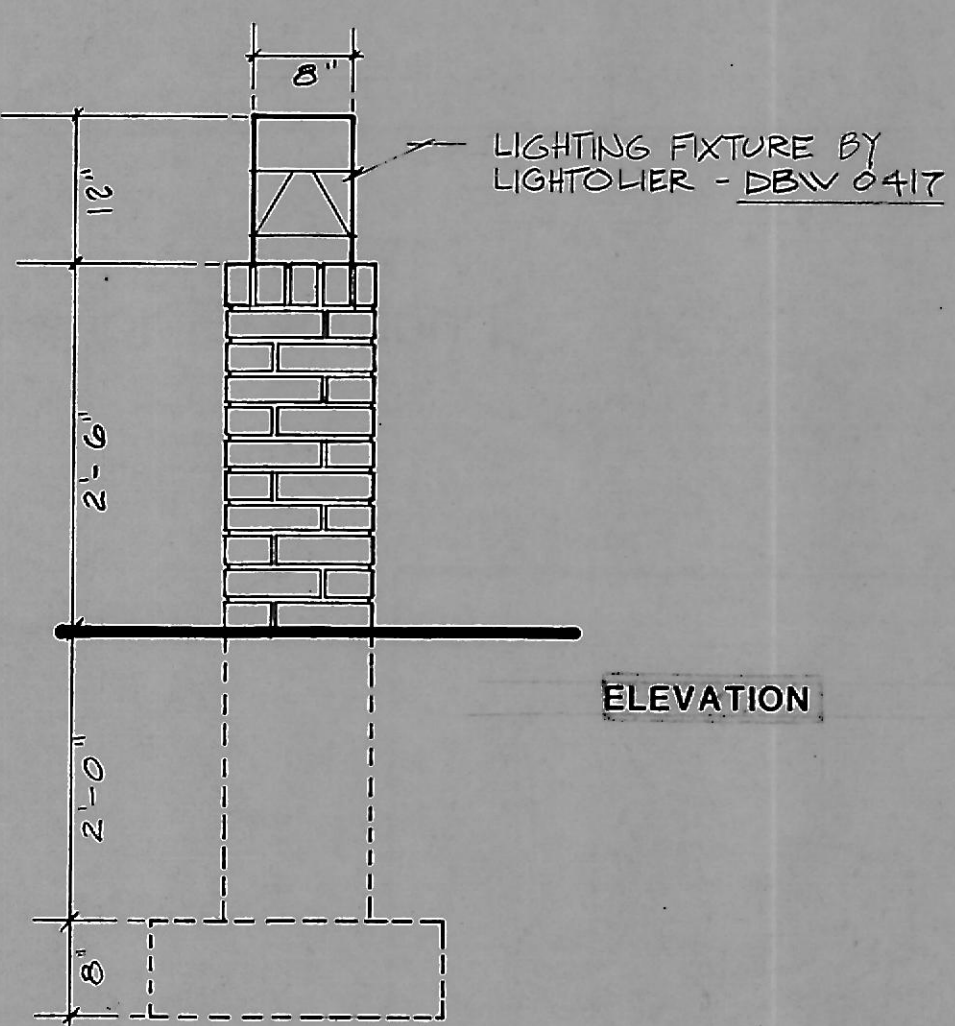


ALUM. CAP TO MATCH ZIP-FIB
 2x6 STUD WALL W/ 1/2" SHEET ALUM. E.S.
 ... OVER 1/2" EXT. DRYWALL
 1/2" STUD BATT @ 4'-0" O.C.
 2x2x1/4" STAIR @ 4'-0" O.C.
 3/4" PIPE COL. STAIR SUPPORT



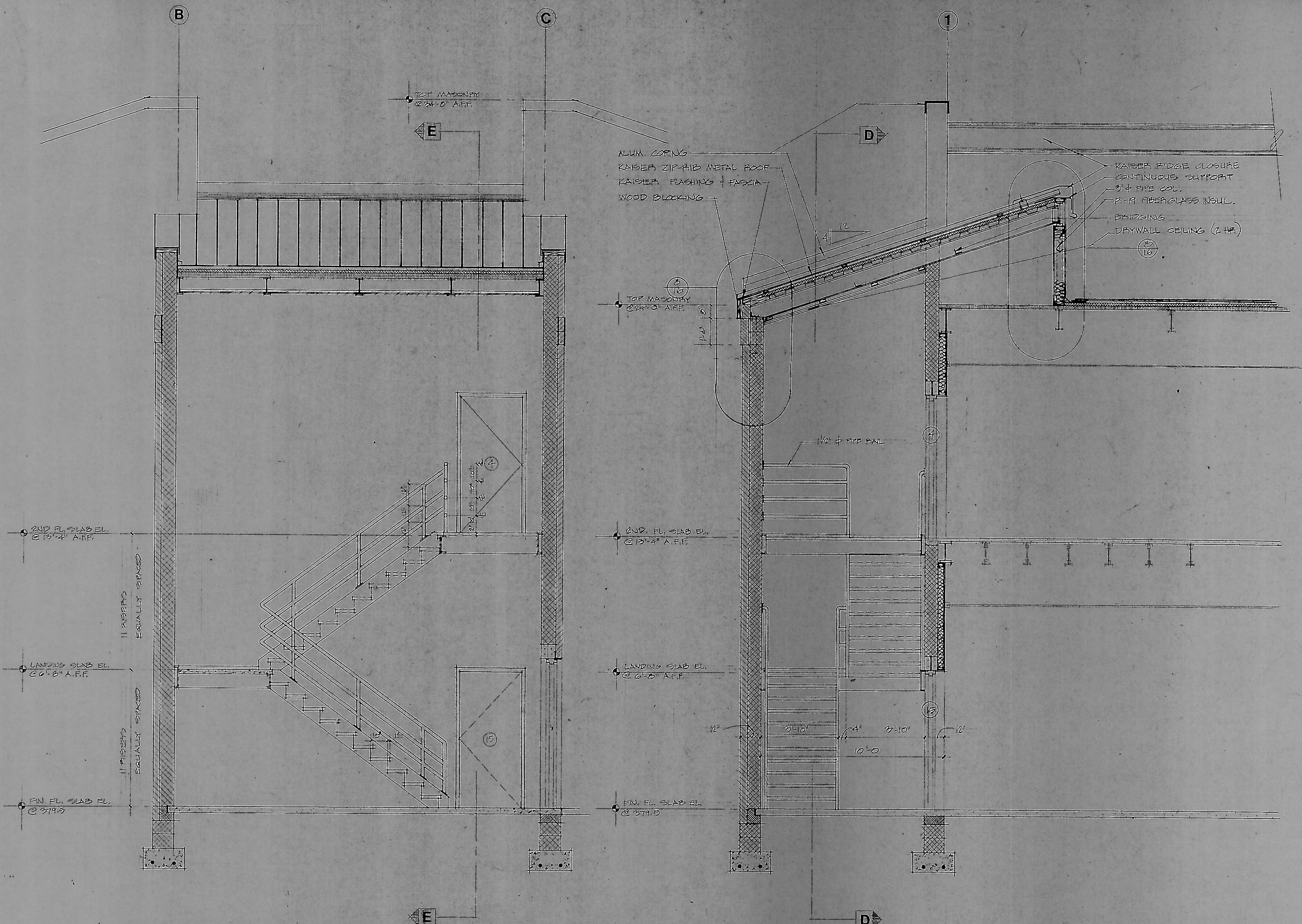
Alternate Screenwall Detail

3/8" = 1'-0"



Bollard Detail

3/4" = 1'-0"

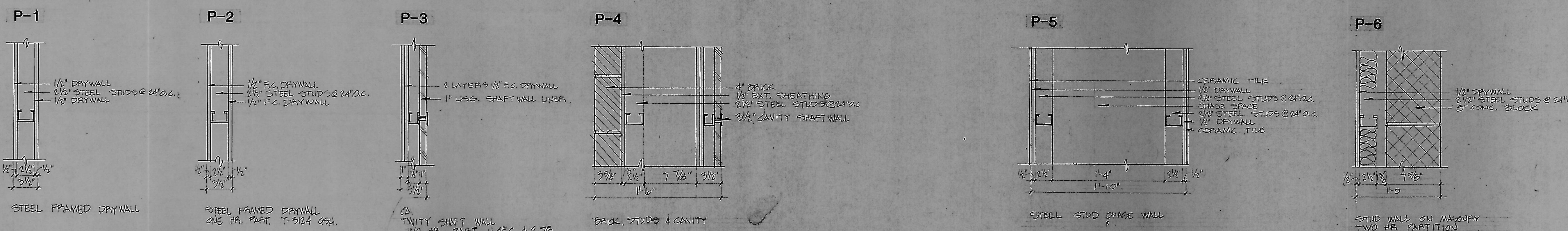


Stair Tower Section D-D

3/8" = 1'-0"

Stair Tower Section E-E

3/8" = 1'-0"



Wall Partition Schedule

1/4" = 1'-0"

LPR

REVISIONS

DATE: 11/21/87
 SCALE: 1/4" = 1'-0"
 DRAWN: J. B. [unclear]
 CHECKED: [unclear]

STAIR SECTIONS,
 PARTITION SCHEDULE,
 DETAILS

FIRST NATIONAL BANK BUILDING
 OWNER: FIRST NATIONAL BANK OF MARYLAND
 ARCHITECT: LAND DESIGN/RESEARCH

12