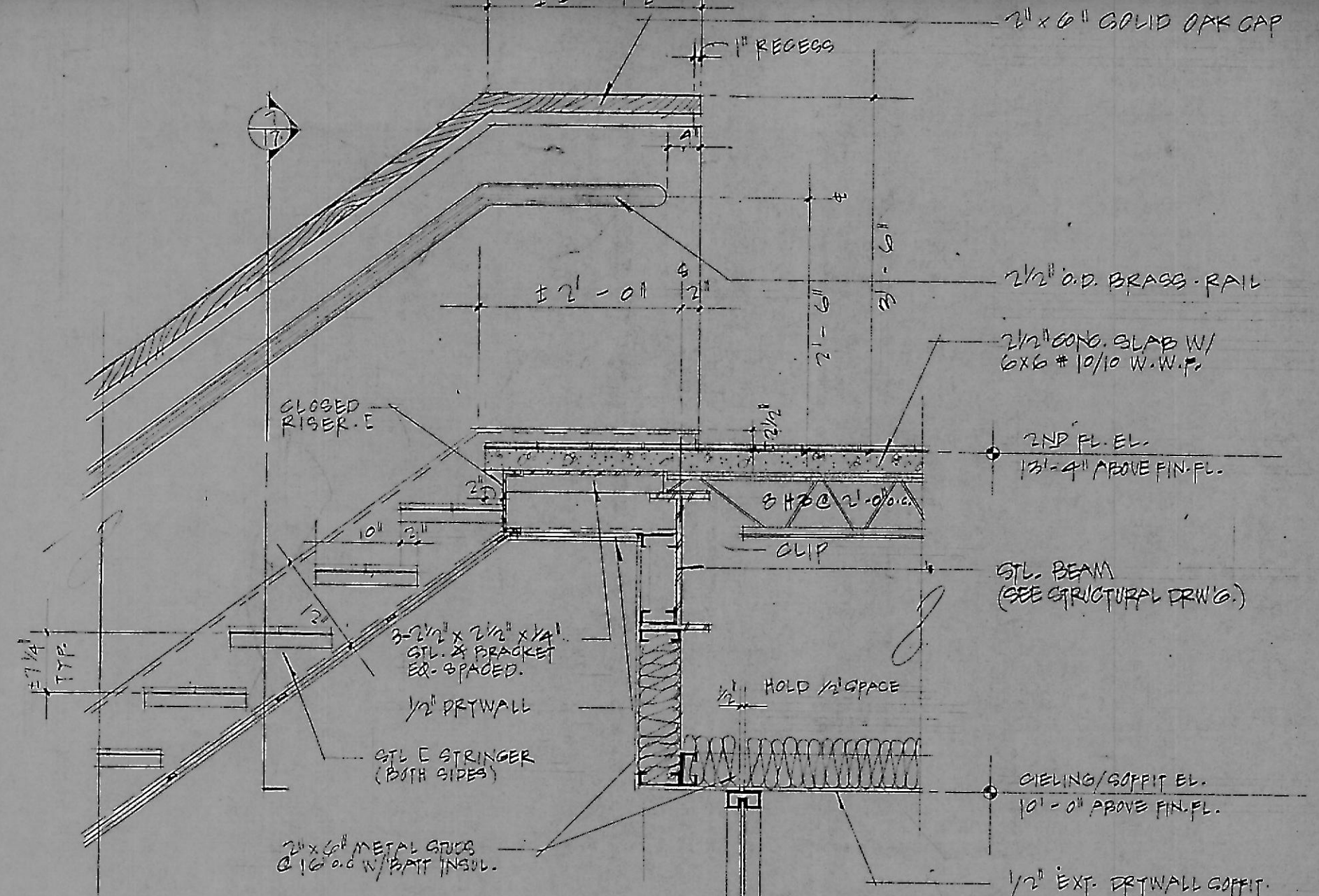
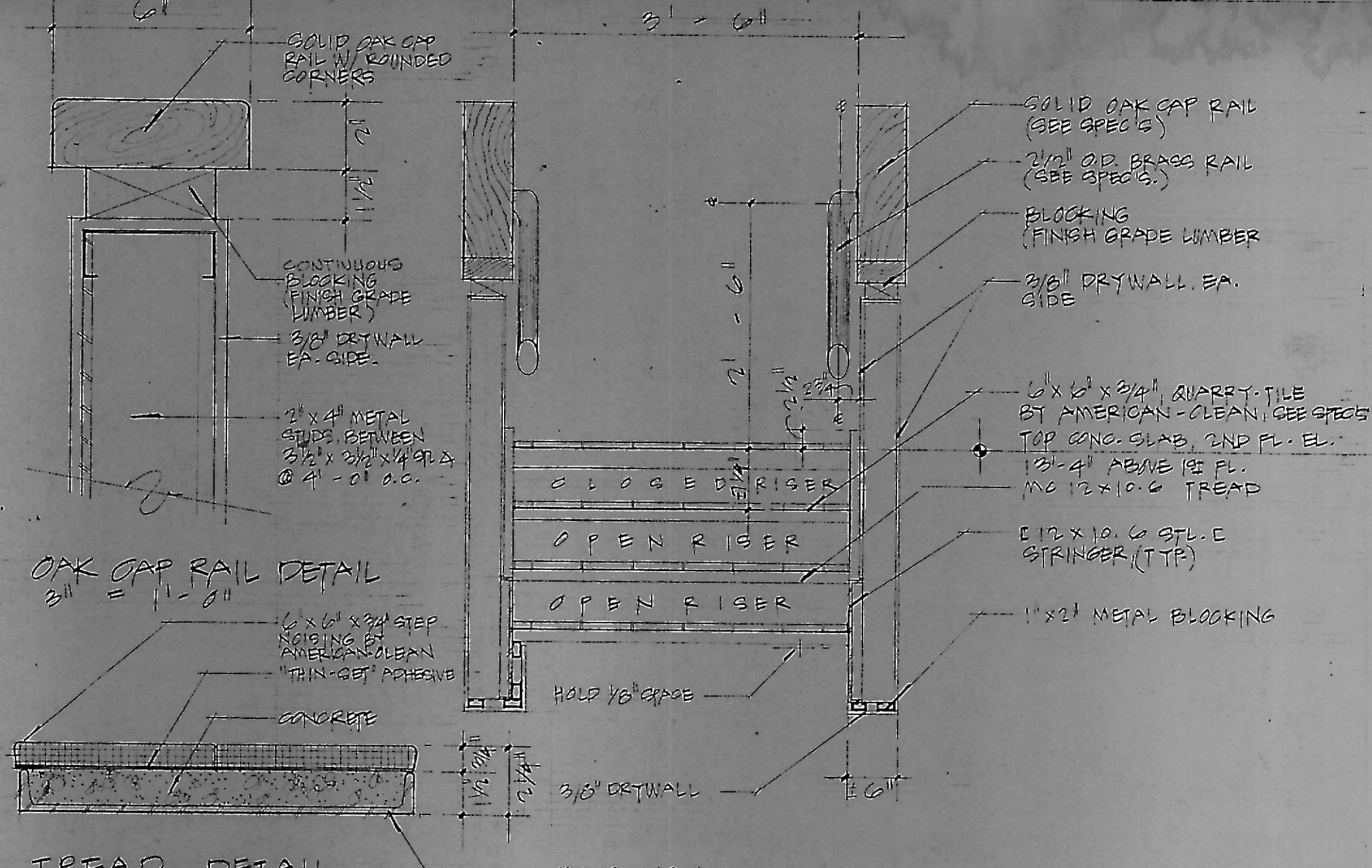


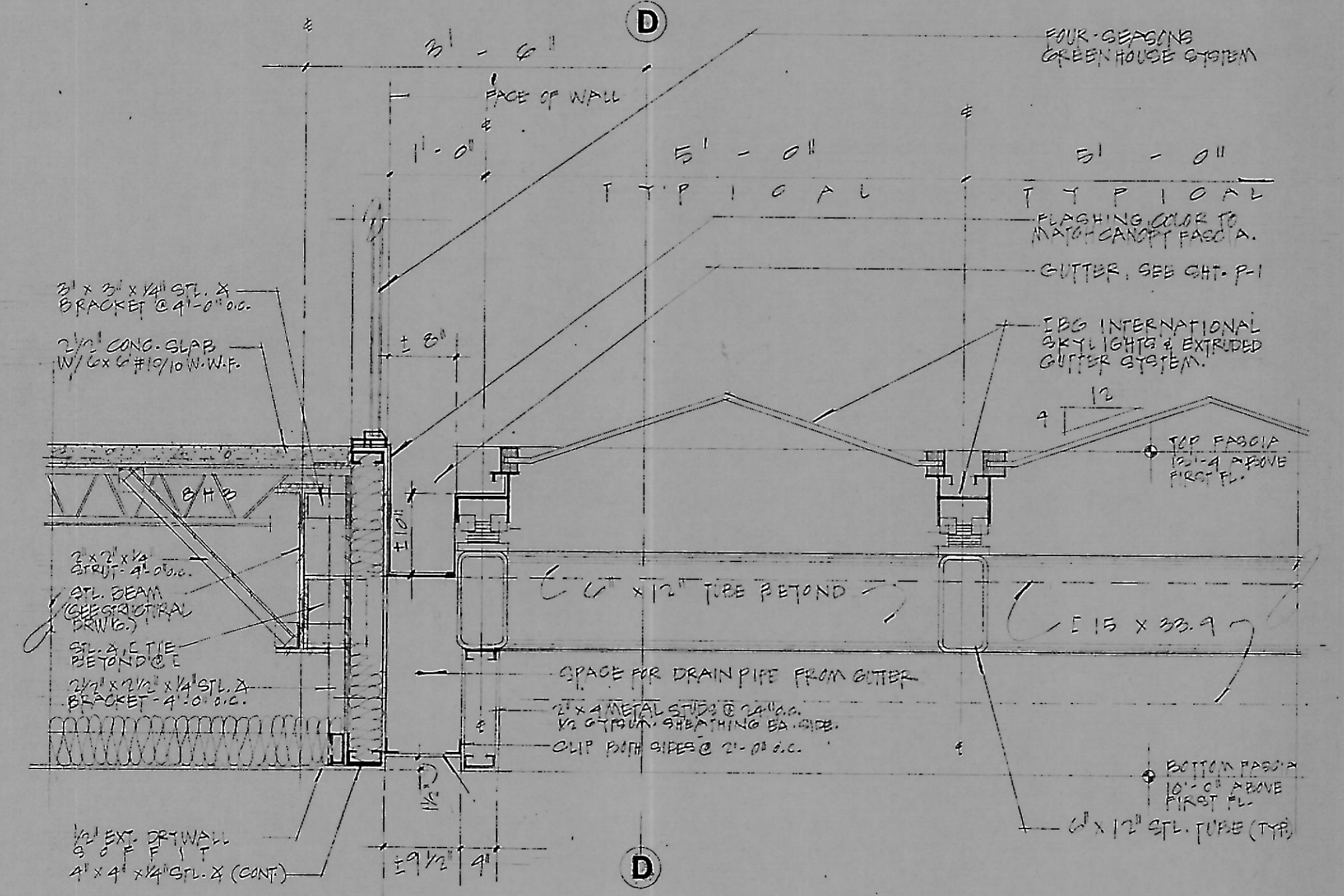
1 DETAIL - PARAPET WALL & SKYLIGHT  
3/4" = 1" - 0"



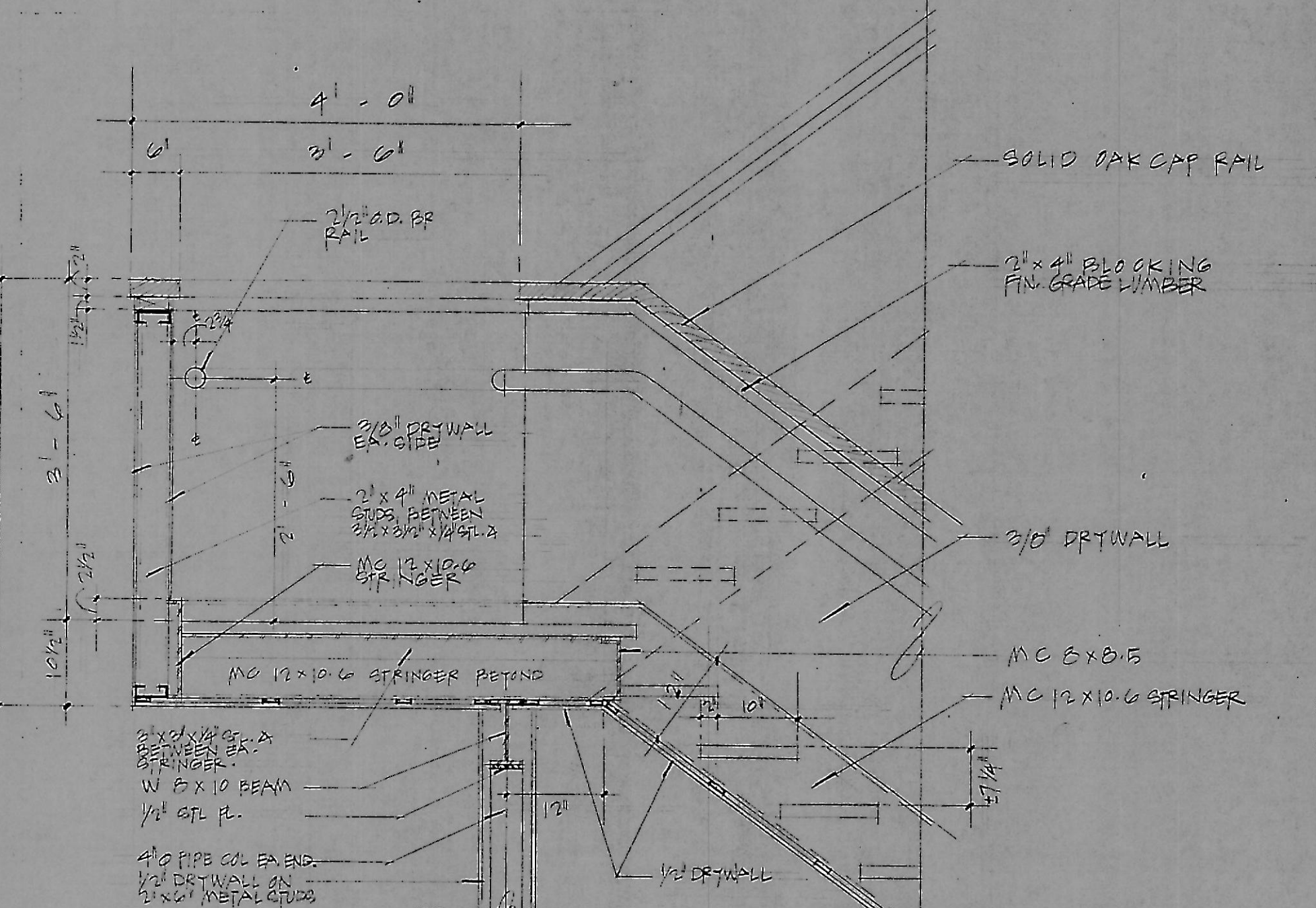
4 TOP OF STAIR @ WALKWAY  
3/4" = 1" - 0"



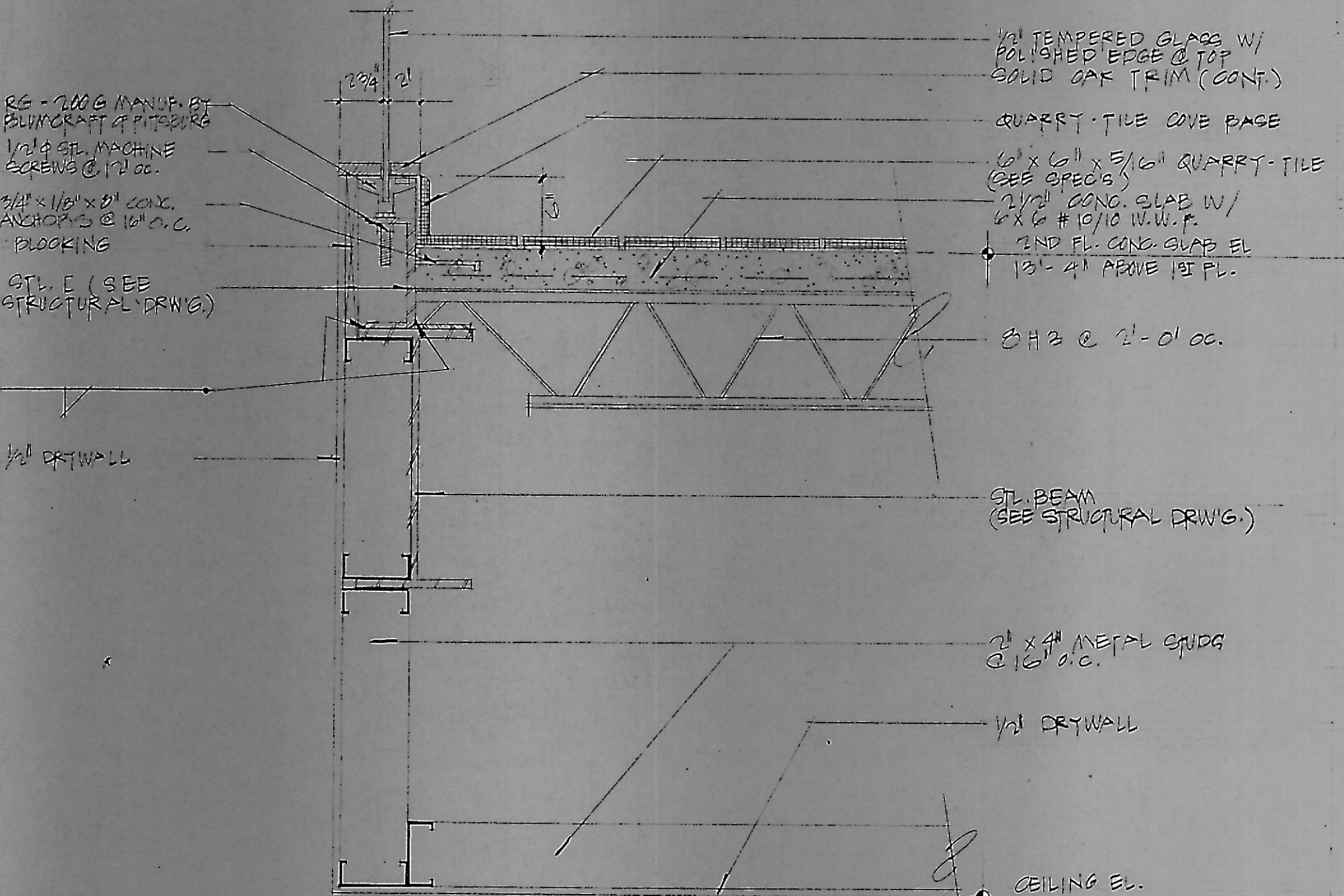
7 STAIR CROSS SECTION @ TREAD  
3/4" = 1" - 0"



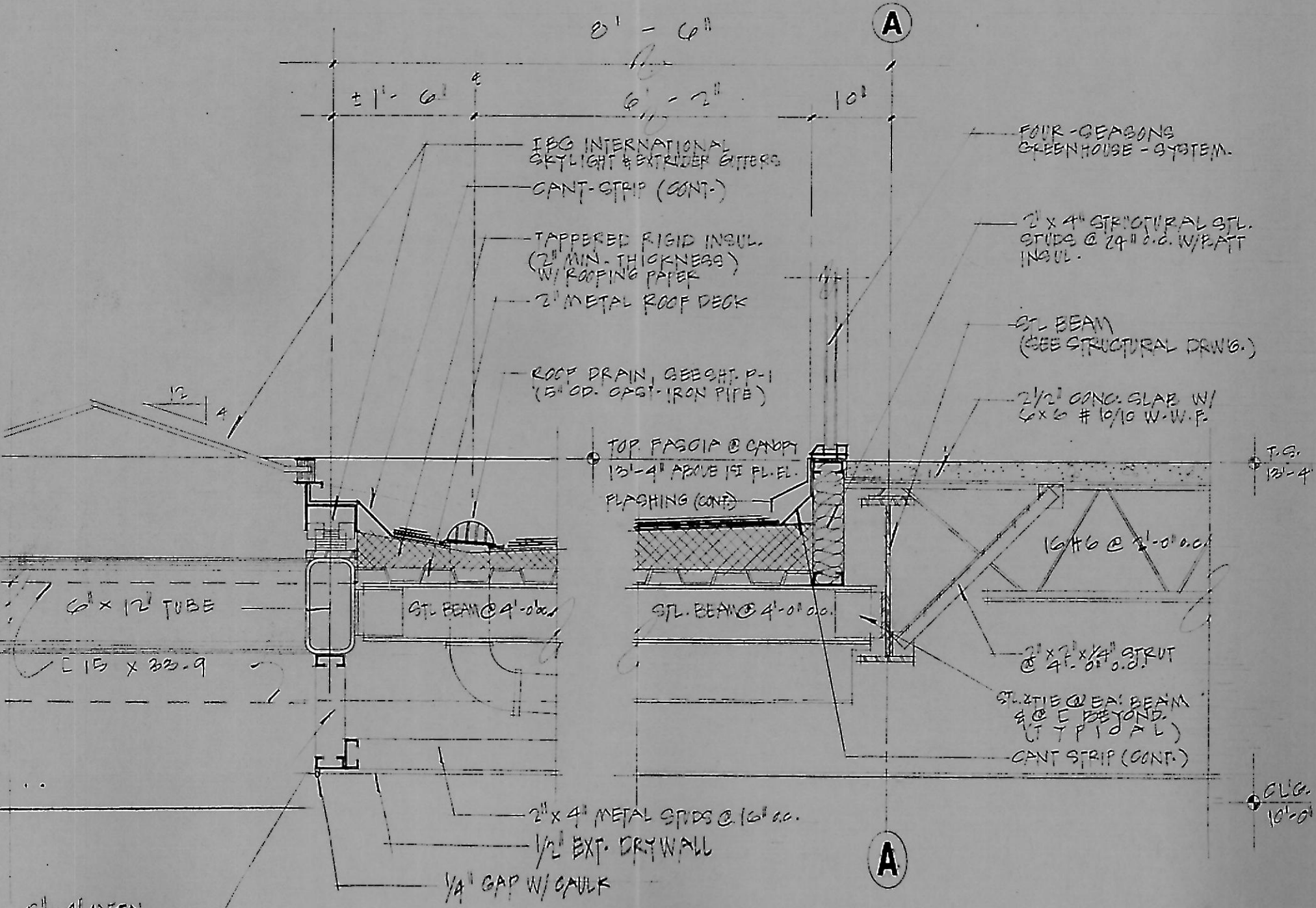
2 FRONT CANOPY CONNECTION & GUTTER DETAIL  
3/4" = 1" - 0"



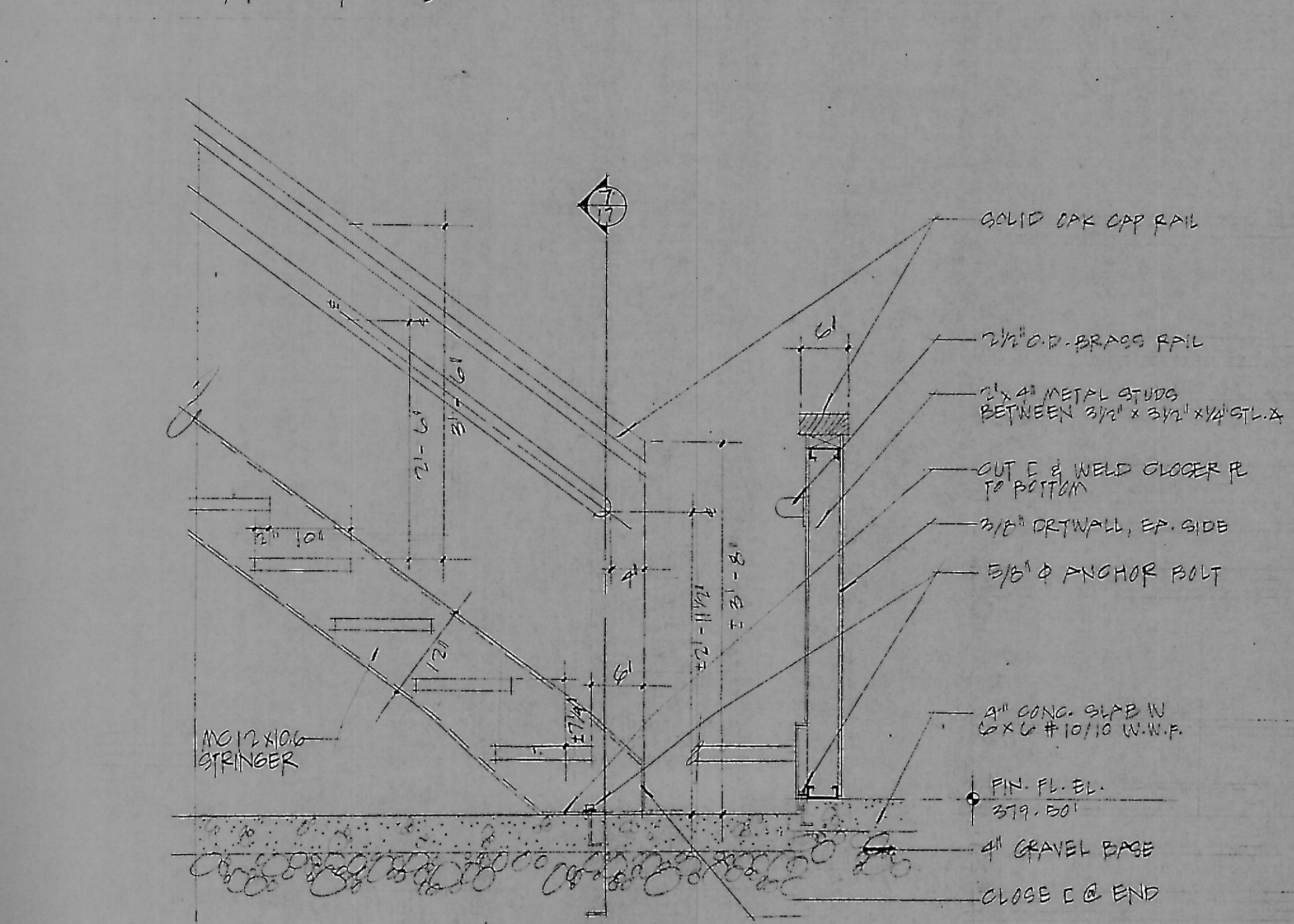
5 DETAIL @ LANDING  
3/4" = 1" - 0"



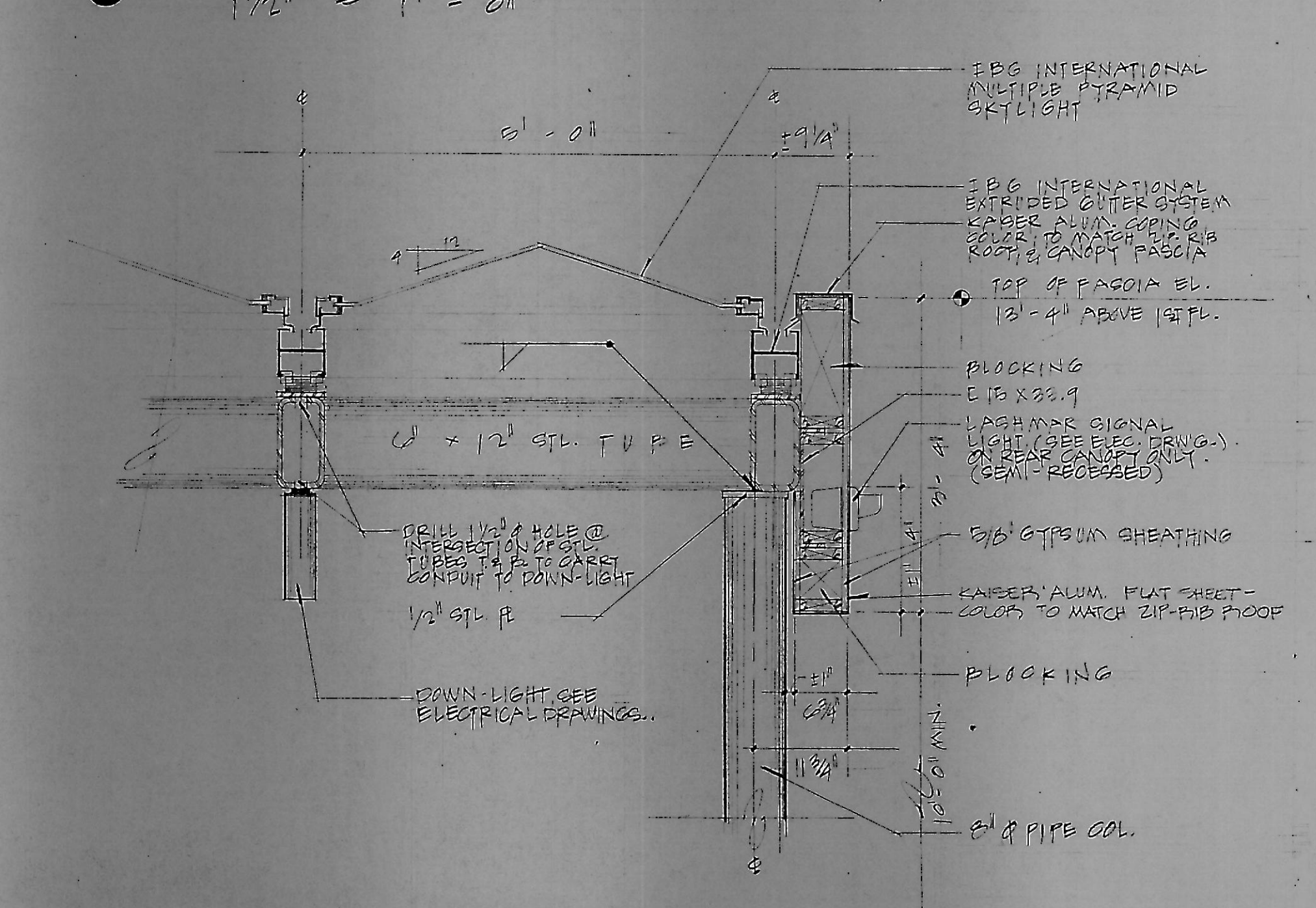
8 DETAIL GLASS RAILING CONNECTION  
1/2" = 1" - 0"



3 CANOPY CONNECTION  
1" = 1" - 0"



6 DETAIL STAIRS @ BASE



9 DETAIL CANOPY FASCIA  
3/4" = 1" - 0"

**PR**

REVISIONS:  
4-2-52  
DATE: 4-2-52  
SCALE: AS SHOWN  
DRAWN: J.E.S.  
CHECKED: J.E.S.

BUILDING DETAILS

**FIRST NATIONAL BANK BUILDING**  
OWNER: FIRST NATIONAL BANK OF MARYLAND  
ARCHITECT: LAND DESIGN/RESEARCH

**17**