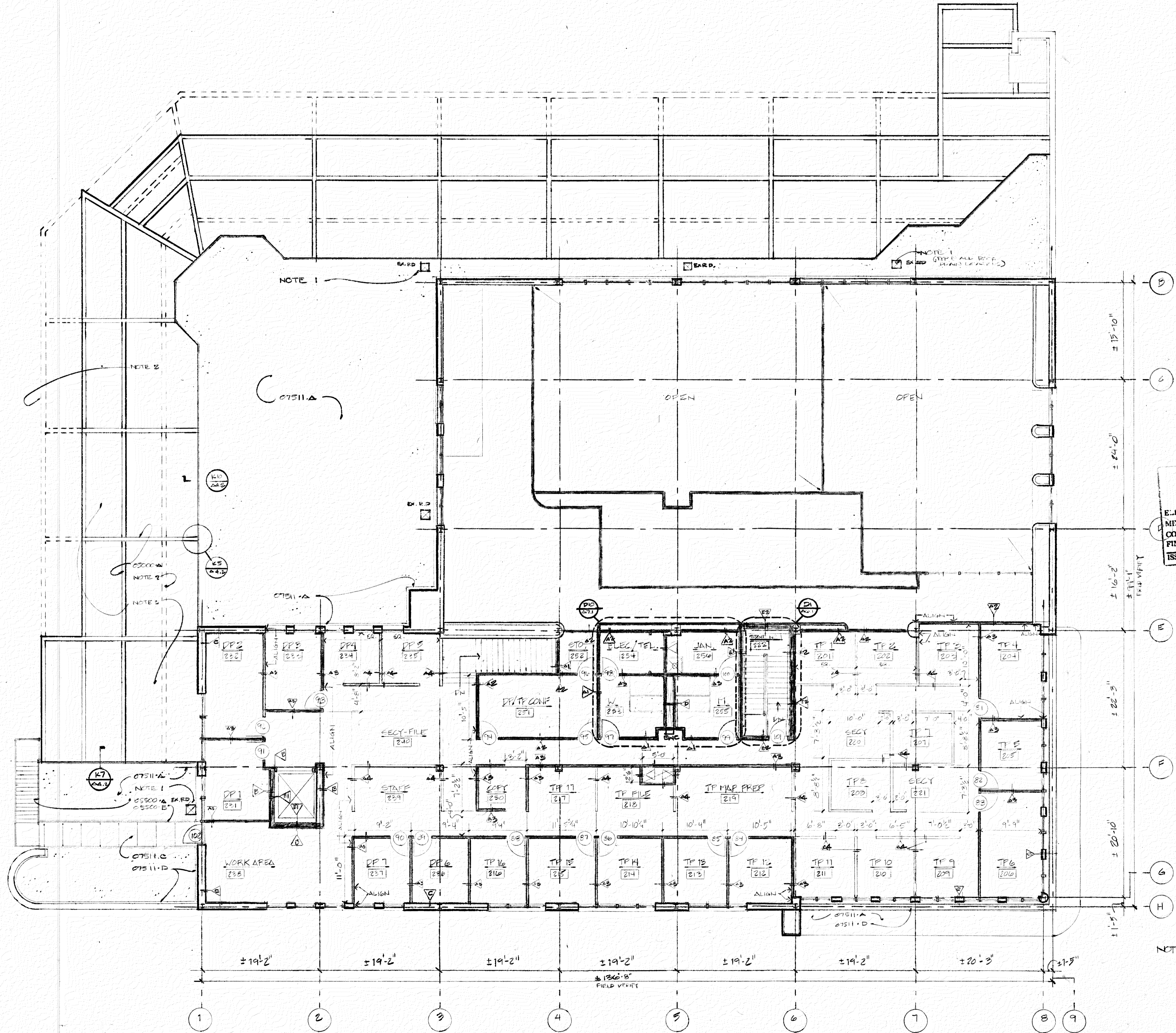


NO	DATE	REVISION

- 05000.A CLEAN & PAINT EXISTING STEEL SUPPORT STRUCTURE TO REMAIN.
- 05500.A REPAIR & REPAINT EXISTING RETRACTABLE METAL STAIR.
 - .B 1/2" GALVANIZED METAL PIPE RAIL PAINTED.
 - .C CONCRETE FILLED METAL PAN STAIR.
 - .D PAINTED METAL PIPE RAIL.
- 06100.A 2X PRESSURE TREATED WOOD BLOCKING.
 - .B 1/2" CDX PLYWOOD.
- 07511.A BUILT-UP ASPHALT ROOFING.
 - .B REMOVE EXIST ROOFING.
 - .C EXISTING GYPSUM PLANK DECK.
 - .D CONC. ROOF PAVERS.
 - .E PROVIDE CANT, FLASHING, COUNTER-FLASHING, & SEALANT AT ROOFING/VERTICAL WALL SURFACE CONNECTION.
- 07600.A METAL GRAVEL STOP. MATCH
 - .B EXISTING
 - .C CONT. METAL CLEAT.
 - .D PREFORMED METAL FLASHING.
- 07900.A CONT SEALANT.



APPROVED

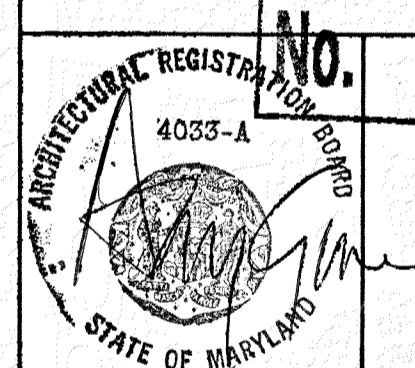
E.E.C. MICH. CONST. FINAL ISSUED

S. K. K. K. SEP 14 1990

- NOTE 1 SLOPE ROOF TO EXIST ROOF DRAINS. REPAIR DRAINS. CLEAN OUT DRAINS & RAIN LEADERS FOR UNOBSTRUCTED FLOW.
- NOTE 2 REMOVE EXIST STEEL FRAME SHOWN DOTTED.
- NOTE 3 REMOVE STEEL DECK TO EXPOSE STEEL STRUCTURE.

RECEIVED
DEPT. OF HOUSING
AND COMMUNITY DEVELOPMENT

AUG 20 1990



SECOND LEVEL
FLOOR PLANS SHEET

OFFICES FOR THE
BALTIMORE REGIONAL
COUNCIL OF
GOVERNMENTS
GREYHOUND STATION PROJECT

GOULD ARCHITECTS P.A.

518 N. Charles Street Baltimore, Maryland 21201
301-244-0070

8-20-90 DATE

1/8" = 10' SCALE

DRAWN

BINDING ORDER

A5

NOTE: FIELD VERIFY ALL FIELD DIMENSIONS WITH REPER ALL DIMENSIONS TO THE ARCH. PERS. TO BE SHOWN ANY WORK.