

**Door Schedule**

All doors shall be typical as shown below unless noted otherwise.

**Typical**

Size: 3'-0" x 7'-0" x 1 3/4"  
 Material: Solid core wood  
 Finish: Clear stain  
 Type: A - see sheet #  
 Rating: None  
 Hrdwre: Office latchset

Group #1 08, 17

Size: 3'-0" x 7'-0" x 1 3/4"  
 Material: Solid core wood  
 Finish: Clear stain  
 Type: B  
 Rating: None  
 Hrdwre: Passage latch set

Group #2 09,09A,78

Size: 3'-0" x 7'-0" x 1 3/4"  
 Material: Hollow metal  
 Finish: Painted  
 Type: A  
 Rating: None  
 Hrdwre: Storage lockset

Group #3 11,102

Size: 3'-0" x 7'-0" x 1 3/4"  
 Material: Galvanized hollow metal  
 Finish: Painted  
 Type: A-w/flush channel top (#102-Type B)  
 Rating: None  
 Hrdwre: Mortise lockset - Exit Type

Group #4 12,15,16,71,98,100

Size: 3'-0" x 7'-0" (#71 pair 5'-4" x 3'-0")  
 Material: Solid core wood  
 Finish: Clear stain  
 Type: A (#71 - Type D)  
 Rating: None  
 Hrdwre: Store room lockset (#71 -also flush bolts)

Group #5 13,14

Size: 3'-0" x 7'-0"  
 Material: Solid core wood  
 Finish: Clear stain  
 Type: A  
 Rating: None  
 Hrdwre: Passage latchset w/thumb turn privacy lock

Group #6 20,28,46,56,60

Size: 3'-0" x 7'-0"  
 Material: Solid core wood  
 Finish: Clear stain  
 Type: B  
 Rating: None  
 Hrdwre: Office lockset

Group #7 25,26,27,58,59,66

Size: See type  
 Material: Aluminum entrance  
 Finish: To match aluminum windows  
 Type: F (59), G (25,26,27), H (66), J (58)  
 Rating: None  
 Hrdwre: Closers, deadbolt latch, (flush bolt @ 25,26,27 & 66)  
 Push plate & pull bars

Group #8 29,68,69,70,71,94,95,96, 01A

Size: 3'-0" x 7'-0" x 1 3/4" (#69 - pair 5'-4" x 7'-0" x 1 3/4"; #68 & 70 - 2'-8" x 7'-0" x 1 3/4")  
 Material: Solid core wood  
 Finish: Clear stain  
 Type: A (#69 - Type D)  
 Rating: None  
 Hrdwre: Passage latchset (#69 - also flush bolts)

Group #9 01,30,31,32,34,101, 10A

Size: 3'-0" x 7'-0" x 1 3/4" (10A TO BE 2'-4" WIDE)  
 Material: Solid core wood  
 Finish: Clear stain  
 Type: B (10A - TYPE A)  
 Rating: 1 hr. (10A - 1 1/2 hr.)  
 Hrdwre: Passage latchset, closer  
 (Doors #30,31,32 to receive office latchset)  
 (10A TO RECEIVE OFFICE LATCHSET)

Group #10 67,67A,72

Size: Pair 6'-0" x 7'-0" x 1 3/4"  
 Material: Solid core wood  
 Finish: Clear stain  
 Type: C  
 Rating: None  
 Hrdwre: Passage latchset, flush bolts, closer

Group #11 77,79,97,99

Size: 3'-0" x 7'-0" x 1 3/4"  
 Material: Solid core wood  
 Finish: Clear stain  
 Type: A  
 Rating: None  
 Hrdwre: Push plate/pull handle, closer

**Finish Schedule**

Carpets - Marquesa Lana - level loop  
 C1 - Min. 28 oz.  
 C2 - Min. 32 oz.  
 Colors & textures as selected by Architect.

Vinyl Tile - Armstrong  
 Standard Excelon  
 Colors as selected by Architect.

Vinyl Base - Johnsonite  
 Colors as selected by Architect.

Paint - Duron  
 Eggshell enamel

Act - Armstrong  
 2'x4' open plan cortega

All rooms shall receive typical finishes as shown below unless noted otherwise.

Group	Floors	Base	Walls	Ceiling	Remarks
Typical	C1	V	P	ACT	See reflected ceiling plan for location of painted gypsum board bulkheads, if any.

Group #1 VCT V P ACT

Group #2 C1 V P P

Group #3 C2 V P ACT  
 4'x 6' fabric wrapped tackable wall surface - as directed by Architect.

Group #4 Existing N/A Existing Existing  
 Constr. (Seal concrete) Painted Painted  
 Clean all surfaces. Note: Ceiling in 2nd level stair #1 shall receive ACT

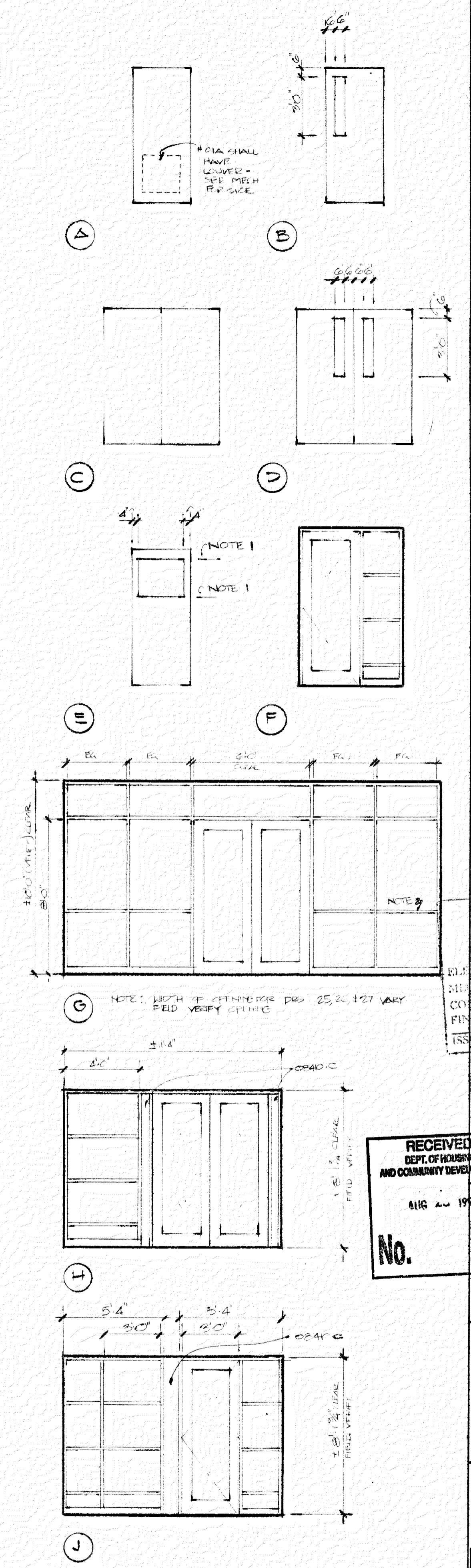
Group #1 B01, B02, B03, B24, B25, B26, 144, 180, 181, 182, 253, 254, 255, & 256

Group #2 140

Group #3 146 & 172

Group #4 B04, B13, B20, B23, 110A, E22A

All other area to receive typical finishes.



NO	DATE	REVISION

APPROVED

RECEIVED  
 DEPT. OF HOUSING  
 AND COMMUNITY DEVELOPMENT  
 STATE OF MARYLAND  
 418 JUL 1990

ARCHITECTURAL REGISTRATION BOARD  
 4083-A

NO.

DOOR / FINISH SCHEDULES SHEET

OFFICES FOR THE  
 BALTIMORE REGIONAL  
 COUNCIL OF  
 GOVERNMENTS  
 GREYHOUND STATION PROJECT

GOULD  
 ARCHITECTS, P.A.  
 518 N. Charles Street Baltimore, Maryland 21201  
 301-244-0070

8-20-90 DATE

SCALE

DRAWN

BINDING ORDER

A2.1

Door Types