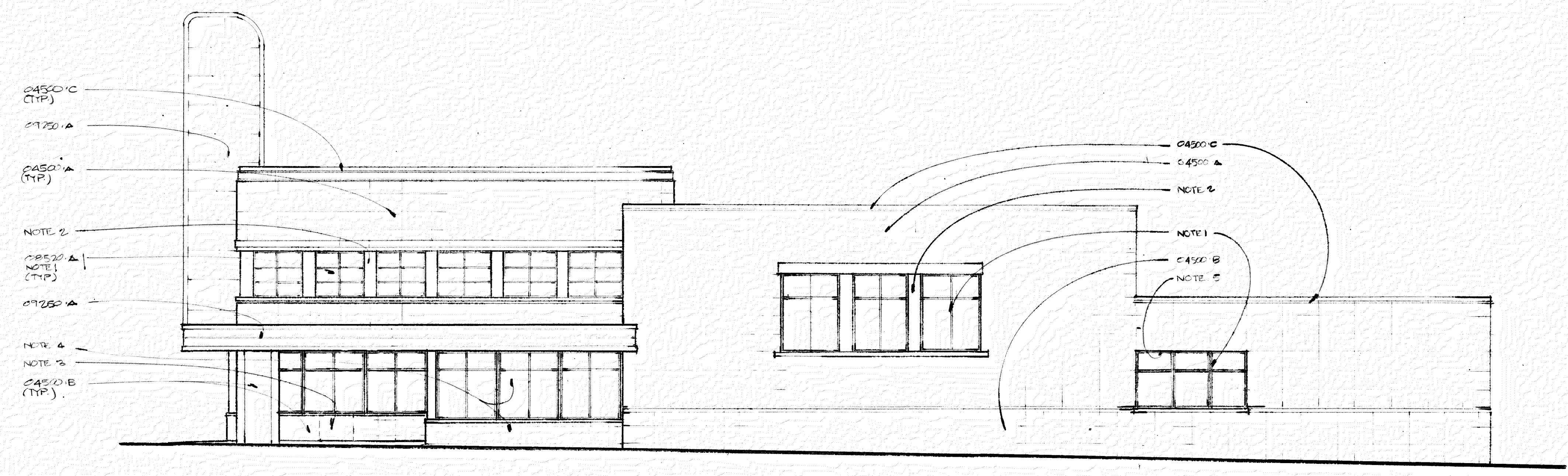
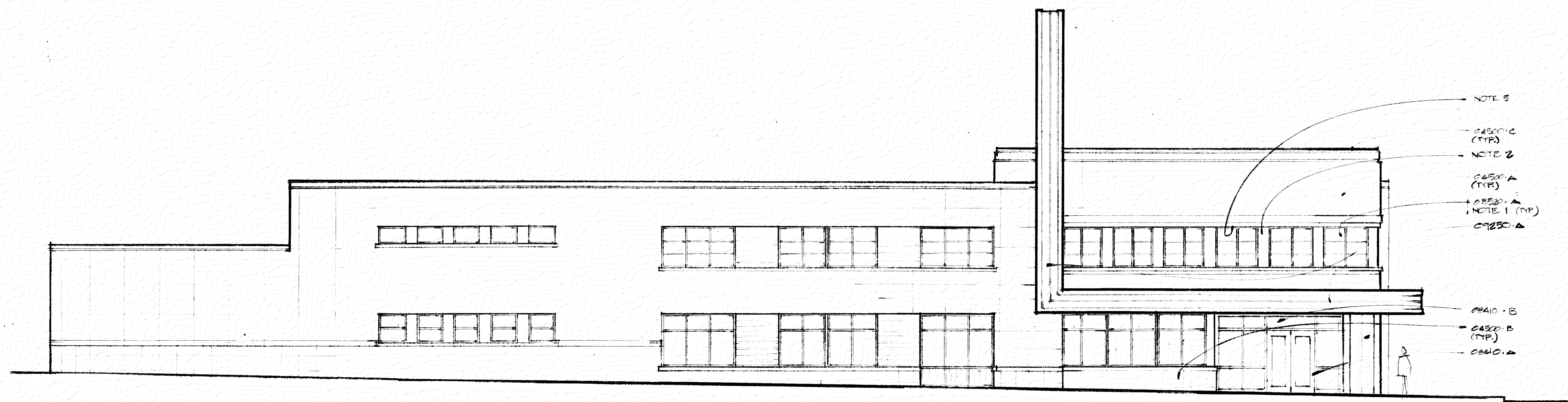


NO	DATE	REVISION



SOUTH ELEVATION (CENTRE STREET)



WEST ELEVATION (HOWARD STREET)

- 04200.A MASONRY INFILL IN EXISTING OPENING. USE SALVAGED OR REPAIRED MATCHING BRICK.
- .B EXISTING MASONRY WALL.
- 04500.A CLEAN EXISTING LIMESTONE PANELS. REPOINT, RECAULK JOINTS.
- .B CLEAN EXISTING TERRA COTTA MASONRY UNITS. REPOINT.
- .C CLEAN & REPAIR MASONRY COPING FOR WEATHERTIGHT SEAL. RECAULK.
- 05000.A CLEAN & PAINT EXISTING STEEL SUPPORT STRUCTURE TO REMAIN.
- 05500.A REPAIR & REPAINT EXISTING RETRACTABLE METAL STAIR.
- .B 1 1/2" GALVANIZED METAL PIPE RAIL PAINTED.
- .C CONCRETE FILLED METAL PAN STAIR.
- .D PAINTED METAL PIPE RAIL.
- 06100.A 2X PRESSURE TREATED WOOD BLOCKING.
- .B 1/2" CDX PLYWOOD.
- 07511.A BUILD-UP ASPHALT ROOFING. REMOVE EXIST ROOFING.
- .B EXISTING GYPSUM PLANK DECK. CONC. ROOF FAYERS.
- .C PROVIDE CANT. FLASHING, COUNTER-FLASHING, & SEALANT AT ROOFING/VERTICAL WALL SURFACE CONNECTION.
- 07600.A METAL GRAVEL STOP. MATCH EXISTING.
- .B CONT. METAL CLEAT.
- .C PREFORMED METAL FLASHING.
- 07900.A CONT SEALANT.
- 08110.A HOLLOW METAL DOOR. PAINTED.
- 08410.A WIDE STYLE ALUMINUM ENTRANCE-DOORS, & SIDE LIGHTS - FINISH & COLOR TO MATCH ALUMINUM WINDOWS.
- .B ALUMINUM TRANSOM ABOVE ENTRANCE. FINISH TO MATCH ALUMINUM ENTRANCE.
- .C ALUMINUM JAMB EXTENSION - FINISH TO MATCH WINDOW SYSTEM.
- 09250.A PATCH & REPAIR EXISTING PLASTER MARQUEE.
- .B 6" RADIUS LIGHT COVE - FIT TO CONTOUR OF MARQUEE. PROVIDE PREMANUFACTURED CORNERS. ALL EXPOSED ENDS TO BE 90 DEGREE MITERED RETURN.
- .C GYPSUM BOARD.
- .D 3 5/8" METAL STUDS.
- .E 5/8" TYPE 'X' GYPSUM BOARD.
- .F C-H STUD.
- .G 1" SHAFF WALL LINER PANEL.
- .H 7/8" FURRING CHANNELS.
- .J 2 1/2" METAL STUDS.
- NOTE 1 REMOVE EXISTING WINDOW & INSTALL NEW ALUMINUM WINDOW IN EXISTING OPENING. (TYPICAL AT ALL WINDOW LOCATIONS UNLESS NOTED OTHERWISE).
- NOTE 2 PAINT EXIST PLASTER MULLIONS (TYPICAL AT ALL LOCATIONS).
- NOTE 3 REMOVE DOOR & FRAME. INFILL WITH MATCHING TERRA COTTA TO HEIGHT OF EXISTING ADJACENT WINDOW SILL.
- NOTE 4 REMOVE BLUE GLAZED BRICK WALL. REPAIR TERRA COTTA BELOW. INSTALL METAL WINDOWS ABOVE AS SHOWN.
- NOTE 5 PAINT EXPOSED METAL LINTELS (TYPICAL AT ALL LINTEL LOCATIONS).

ARCHITECTURAL REGISTRATION BOARD
4033-A
STATE OF MARYLAND
RECEIVED
DEPT. OF HOUSING
AND COMMUNITY DEVELOPMENT
AUG 20 1990
No.

APPROVED
DIRECTION - CONSTRUCTION
ELECTRICAL REGISTRATION BOARD
ELEC. MECH. CONST. FINAL ISSUED
S. J. [Signature]
AUG 14 1990

ELEVATIONS SHEET
OFFICES FOR THE BALTIMORE REGIONAL COUNCIL OF GOVERNMENTS
GREYHOUND STATION PROJECT

GOULD ARCHITECTS, P.A.
516 N. Charles Street Baltimore, Maryland 21201
301-244-0070

8-20-90	DATE
1/8" = 10'	SCALE
	DRAWN
	BINDING ORDER

A4.1