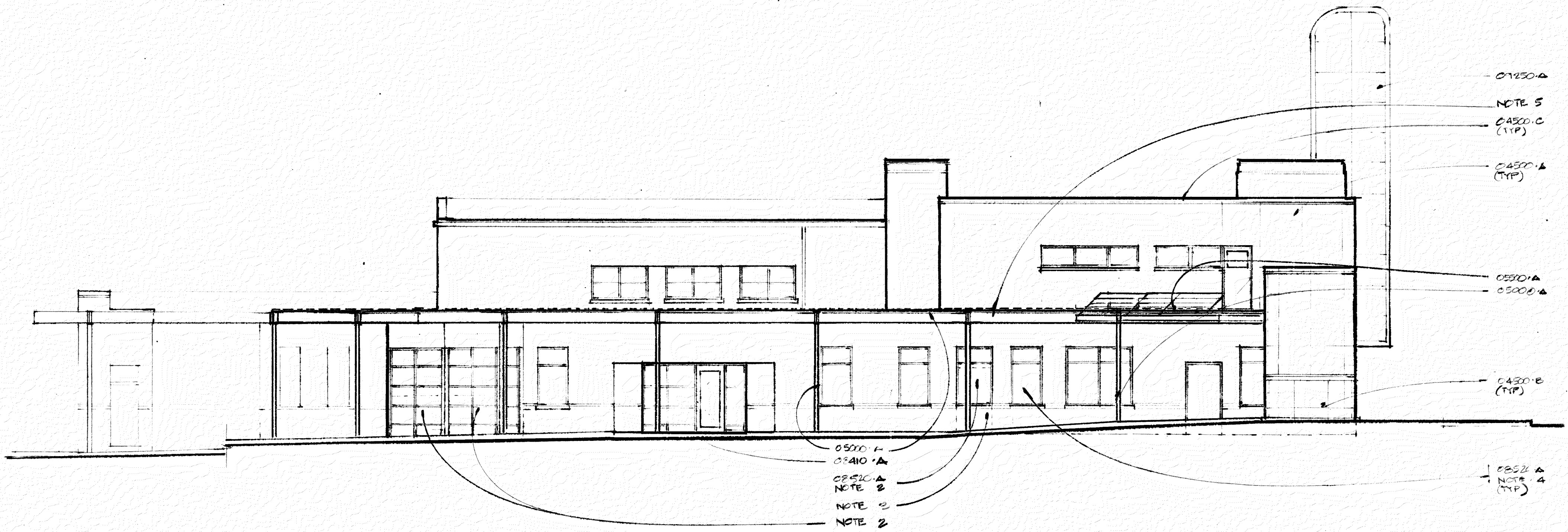
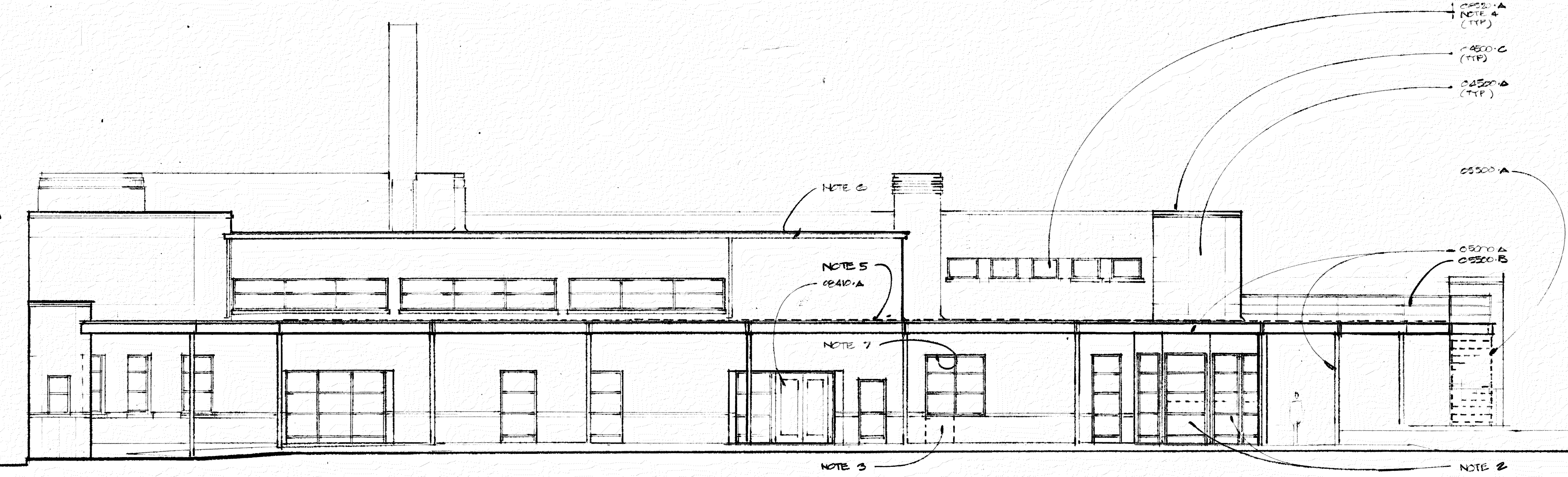


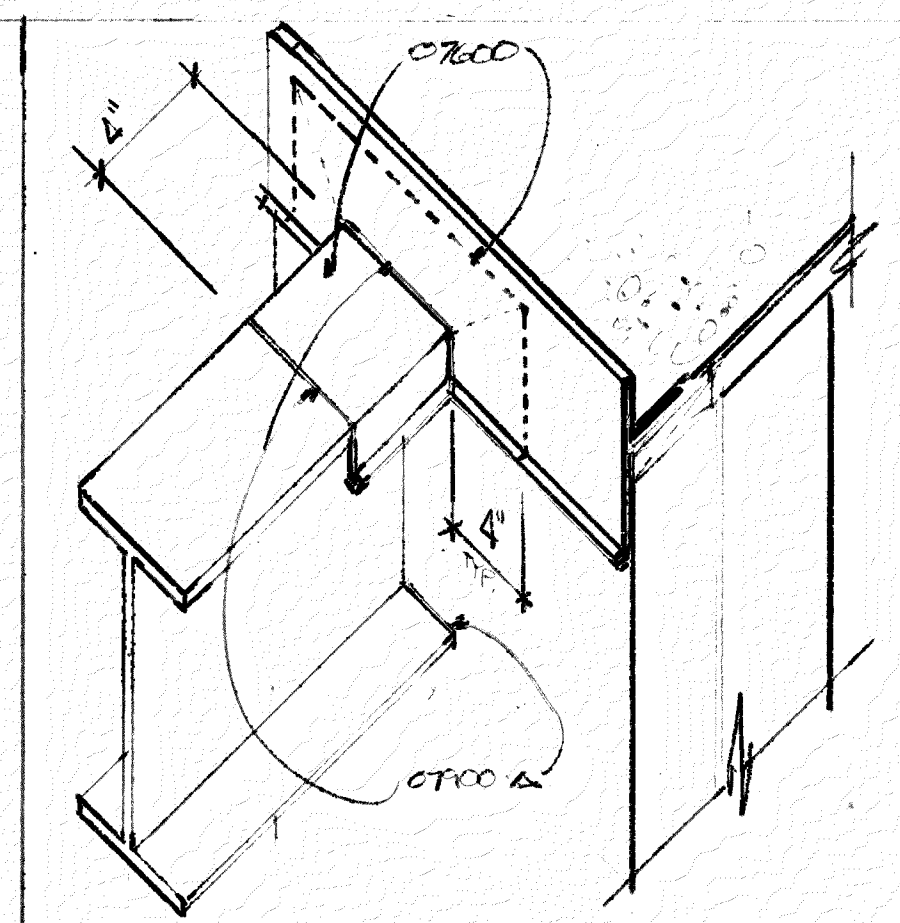
NO	DATE	REVISION



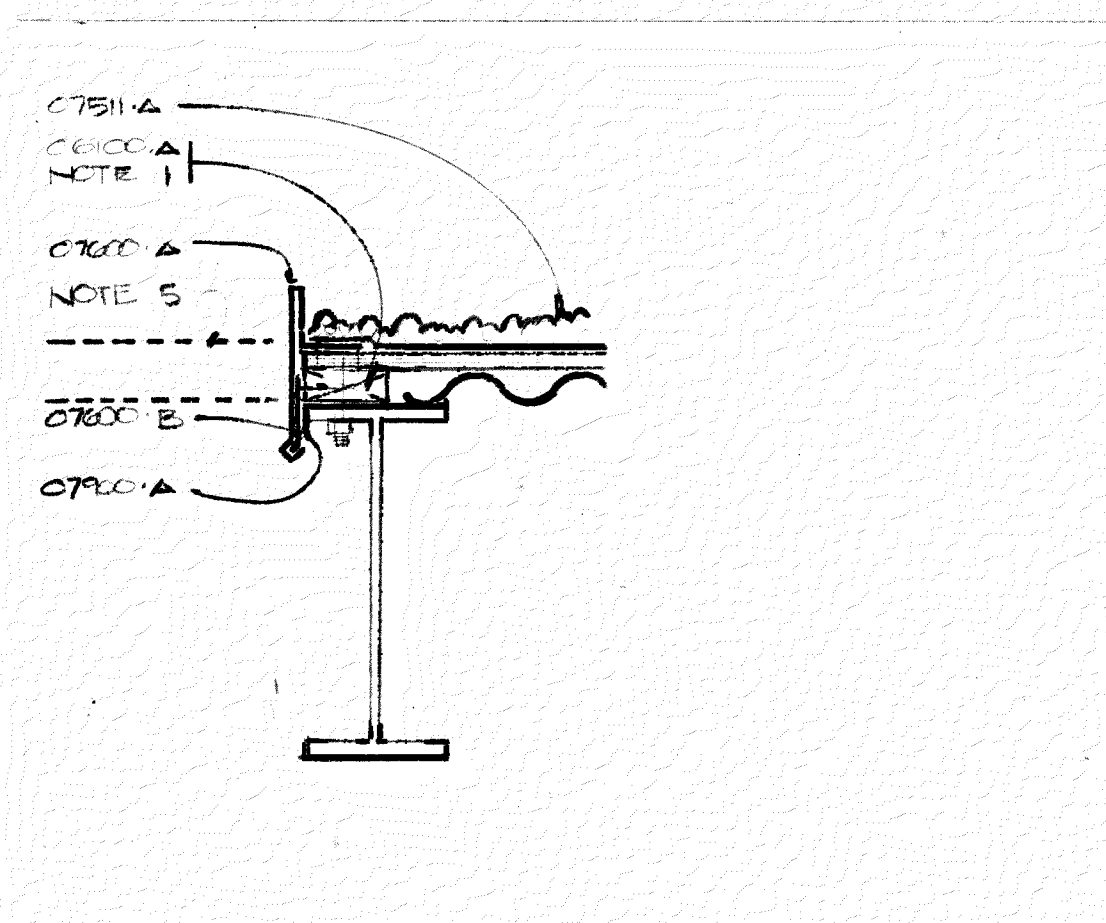
NORTH ELEVATION



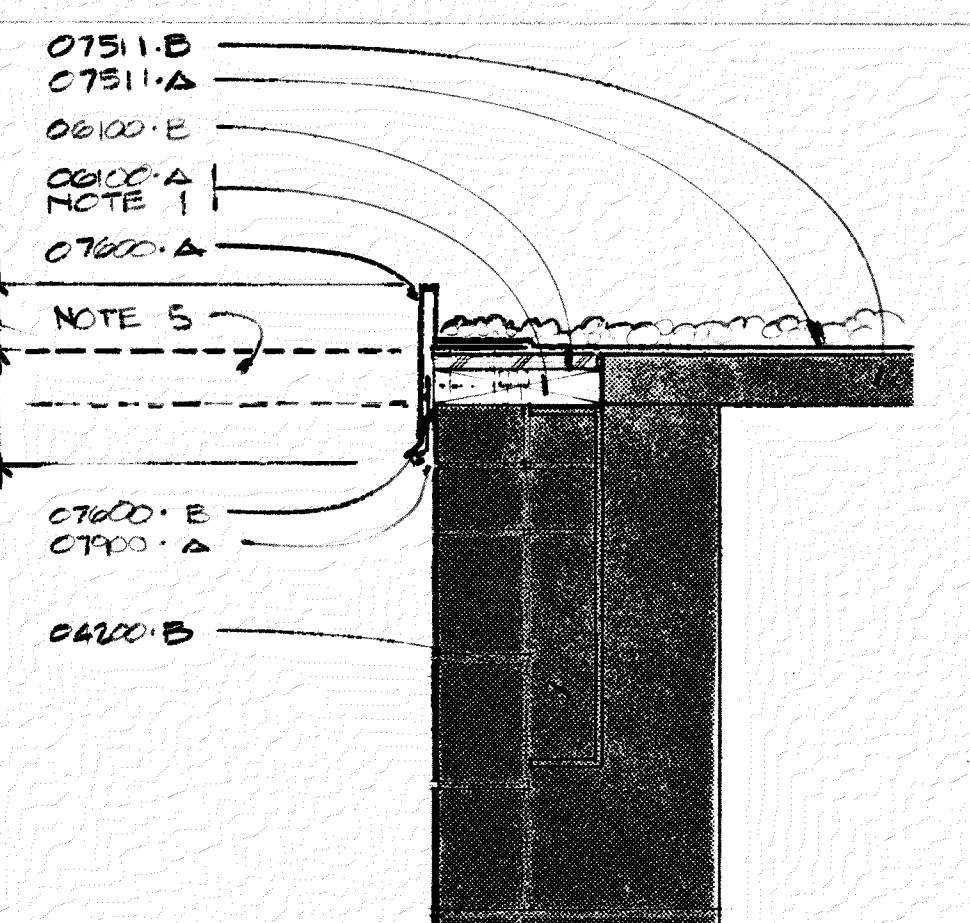
EAST ELEVATION



K5 1/8" = 1'-0" BEAM/WALL CONNECTION



K7 1/8" = 1'-0" GRAVEL GUARD DETAIL @ CORNER



K0 1/8" = 1'-0" GRAVEL GUARD DETAIL @ WALL

- NOTE 1 ANCHOR BLOCKING SECURELY TO EXISTING MASONRY WALL OR STEEL BEAM.
- NOTE 2 REMOVE EXISTING WINDOWS & DOORS. REMOVE CEMENT PLASTER WALL. RETAIN STEEL FRAME. REPAIR AS REQUIRED. PROVIDE NEW LINTELS AT HEAD OF OPENING.
- NOTE 3 REMOVE EXISTING DOOR & FRAME AND PROVIDE MASONRY INFILL BELOW NEW WINDOWS. MATCH & ALIGN SILL.
- NOTE 4 REMOVE EXISTING WINDOW & INSTALL NEW ALUMINUM WINDOW IN EXISTING OPENING (TYPICAL AT ALL WINDOW LOCATIONS UNLESS NOTED OTHERWISE).
- NOTE 5 REMOVE EXISTING ROOFING AND METAL DECK.
- NOTE 6 SCRAPE & PAINT EXIST METAL GUTTERS, DOWNSPOUTS & GRAVEL GUARDS - TYPICAL AT ALL EXPOSED LOCATIONS.
- NOTE 7 PAINT EXPOSED METAL LINTELS (TYPICAL AT ALL LINTEL LOCATIONS).

- 04200.A MASONRY INFILL IN EXISTING OPENING. USE SALVAGED OR REPAIRED MATCHING BRICK.
- 04500.A CLEAN EXISTING LIMESTONE PANELS. REPOINT, RECAULK JOINTS.
- 05000.A CLEAN & PAINT EXISTING STEEL SUPPORT STRUCTURE TO REMAIN.
- 05500.A REPAIR & REPAINT EXISTING RETRACTABLE METAL STAIR.
- 06100.A 2X PRESSURE TREATED WOOD BLOCKING.
- 07511.A BUILT-UP ASPHALT ROOFING. REMOVE EXIST ROOFING.
- 07600.A METAL GRAVEL STOP. MATCH EXISTING.
- 07900.A CONT SEALANT.
- 08110.A HOLLOW METAL DOOR. PAINTED.
- 08410.A WIDE STYLE ALUMINUM ENTRANCE DOORS, & SIDE LIGHTS - FINISH & COLOR TO MATCH ALUMINUM WINDOWS.
- 09250.A PATCH & REPAIR EXISTING PLASTER MARQUEE.

ARCHITECTURAL REGISTRATION BOARD  
4033-A  
STATE OF MARYLAND  
RECEIVED  
DEPT. OF HOUSING  
AND COMMUNITY DEVELOPMENT  
AUG 20 1990  
No.

ELEVATIONS SHEET  
OFFICES FOR THE BALTIMORE REGIONAL COUNCIL OF GOVERNMENTS  
GREYHOUND STATION PROJECT

GOULD ARCHITECTS, P.A.  
518 W. Charles Street Baltimore, Maryland 21201  
301-244-0070

8-20-90	DATE
1/8" = 1'-0"	SCALE
	DRAWN
	BINDING ORDER

A4.2

APPROVED  
ELEC. MECH. CONST. FINAL ISSUED  
SEP 14 1990  
Sx. Uhlper