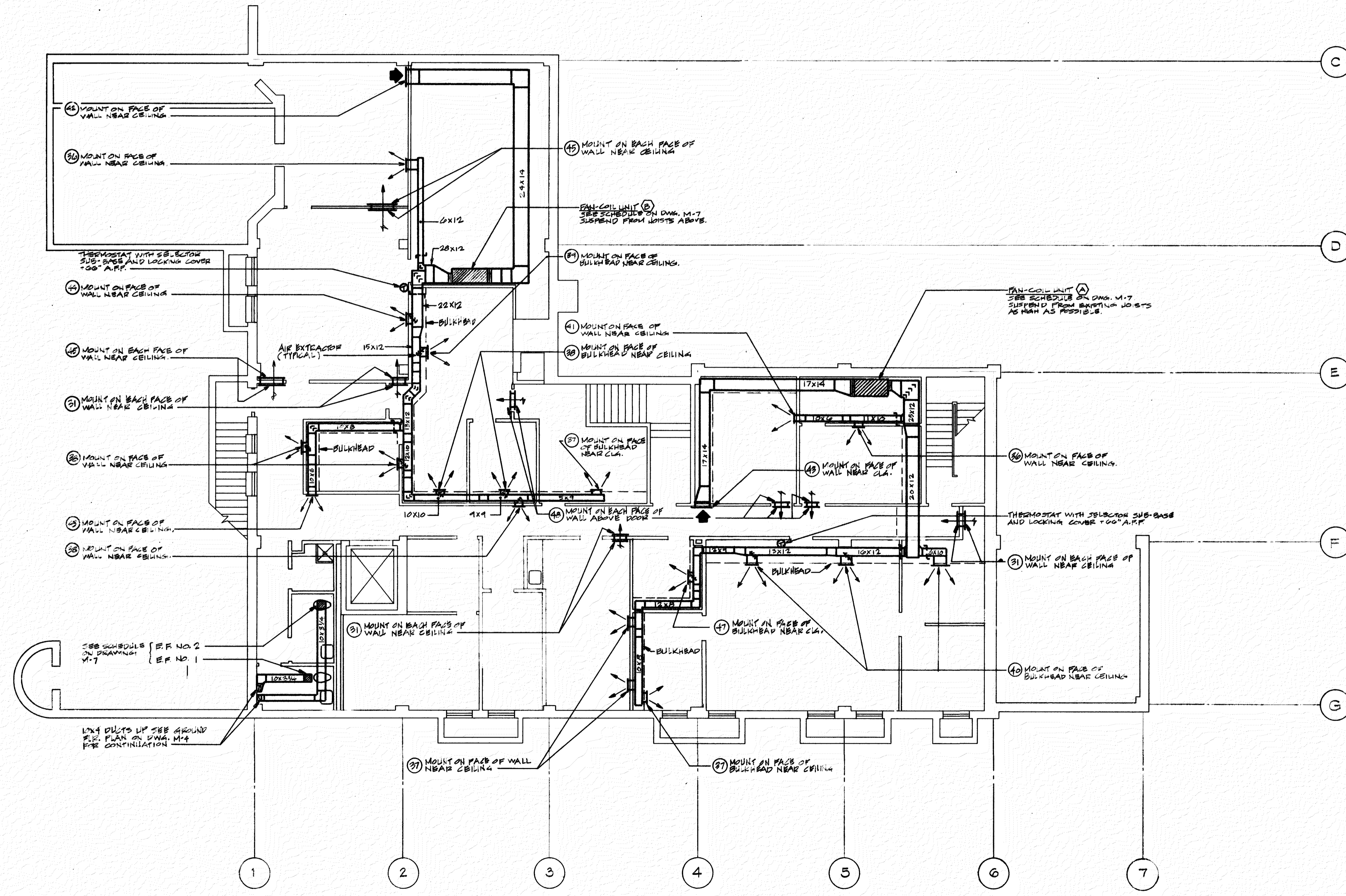


NO.	DATE	REVISION



BASEMENT PLAN
SCALE: 1/8"=1'-0"

RECEIVED
DEPT. OF HOUSING
AND COMMUNITY DEVELOPMENT
AUG 28 1990
No.

PERMIT 567



BASEMENT PLAN
H.V.A.C.

SHEET

REGIONAL PLANNING COUNCIL
GREYHOUND STATION
PROJECT

APPROVED
DIRECTOR - CONSTRUCTION
& PERMITS INSPECTION
DATE
ELEC. MECH. CONST. FINAL ISSUED
3/11/90 SEP 7 1990

GOULD ARCHITECTS P.A.
518 N. Charles Street Baltimore, Maryland 21201
301-244-0070

8-20-90	DATE	M-4
1/8"=1'-0"	SCALE	
	DRAWN	
	BINDING ORDER	

SCHLENGER/PITZ INC.
Consulting Engineers
3000 Chestnut Ave.
Suite 14, The Mill Centre
Baltimore, Maryland 21211
Box (301) 467-1781 Fax: (301) 467-1334