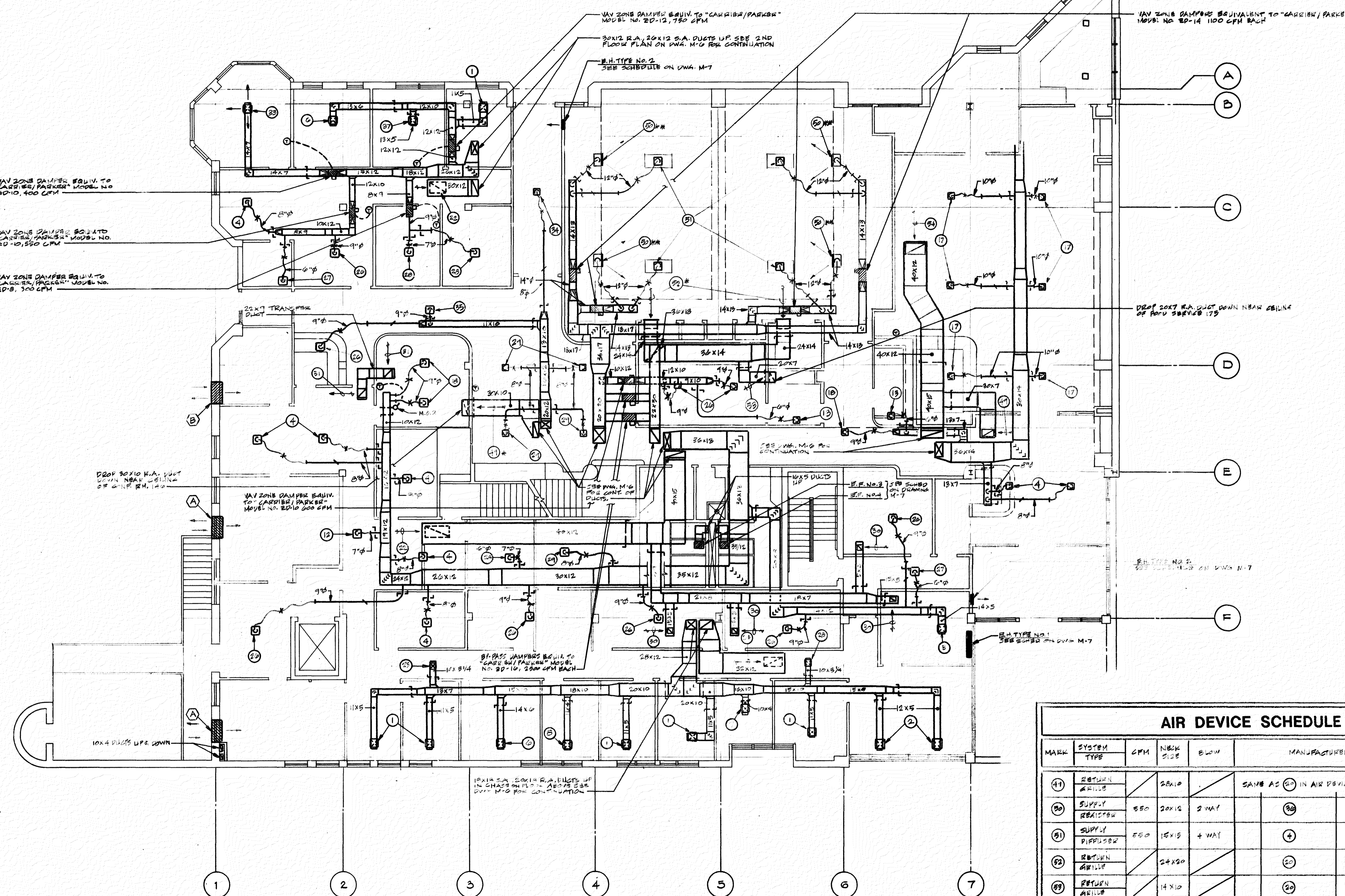


NO.	DATE	REVISION



GROUND FLOOR PLAN
SCALE: 1/8"=1'-0"

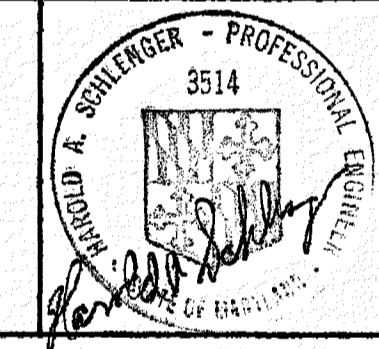
* - MOUNT ON FACE OF WALL NEAR CEILING
** - MOUNT ON FACE OF WALL WITH BOTTOM OF AIRLUKE APPROXIMATELY 12" ABOVE FINISHED FLOOR

AIR DEVICE SCHEDULE					
MARK	SYSTEM TYPE	CFM	NECK SIZE	BLOW	MANUFACTURER & MODEL NO.
41	RETURN AIRLUKE		28x10		SAME AS (20) IN AIR DEVICE SCHEDULE ON DWG. M-7
20	SUPPLY REGISTER	550	20x12	2 WAY	(20)
21	SUPPLY DIFFUSER	550	15x15	4 WAY	(4)
22	RETURN AIRLUKE		24x20		(20)
23	RETURN AIRLUKE		14x10		(20)
24	RETURN AIRLUKE		8x22		(20)

NOTE: SEE DWG. M-7 FOR AIR DEVICE SCHEDULE

RECEIVED
DEPT. OF HOUSING
AND COMMUNITY DEVELOPMENT
AUG 30 1990
NO.

APPROVED
ELEC. MECH. CONST. FINAL ISSUED
SEP 7 1990



GROUND FLOOR PLAN H.V.A.C.

REGIONAL PLANNING COUNCIL
GREYHOUND STATION PROJECT

GOULD ARCHITECTS, P.A.
518 N. Charles Street Baltimore, Maryland 21201
301-244-0070

8-20-90 DATE

1/8"=1'-0" SCALE

DRAWN

BINDING ORDER

M-5

SCHLENGER/PITZ, INC.
Consulting Engineers
3000 Chestnut Ave.
Suite 14, The Mill Centre
Baltimore, Maryland 21211
Tel: (301) 487-1781 Fax: (301) 487-1534