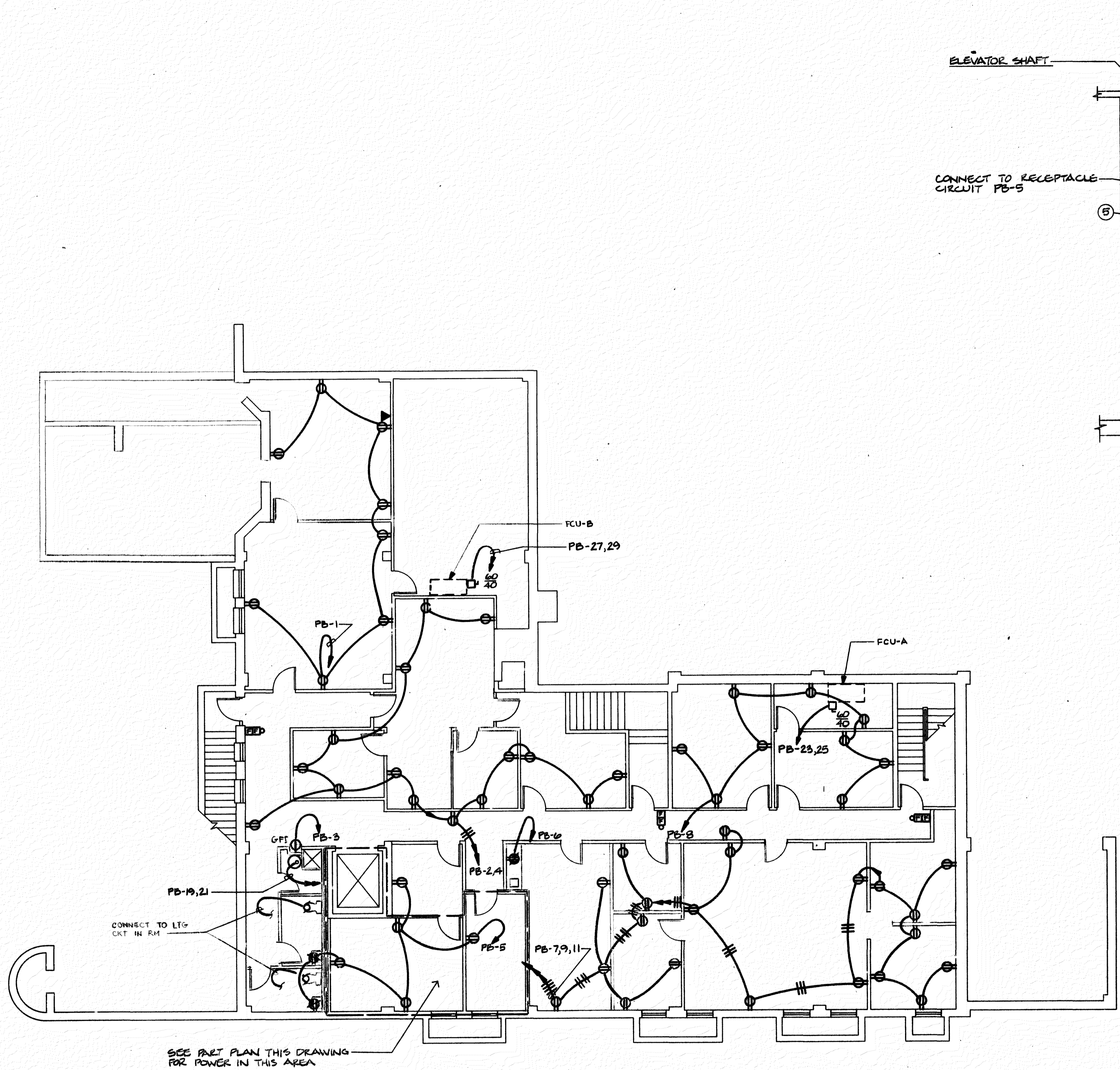
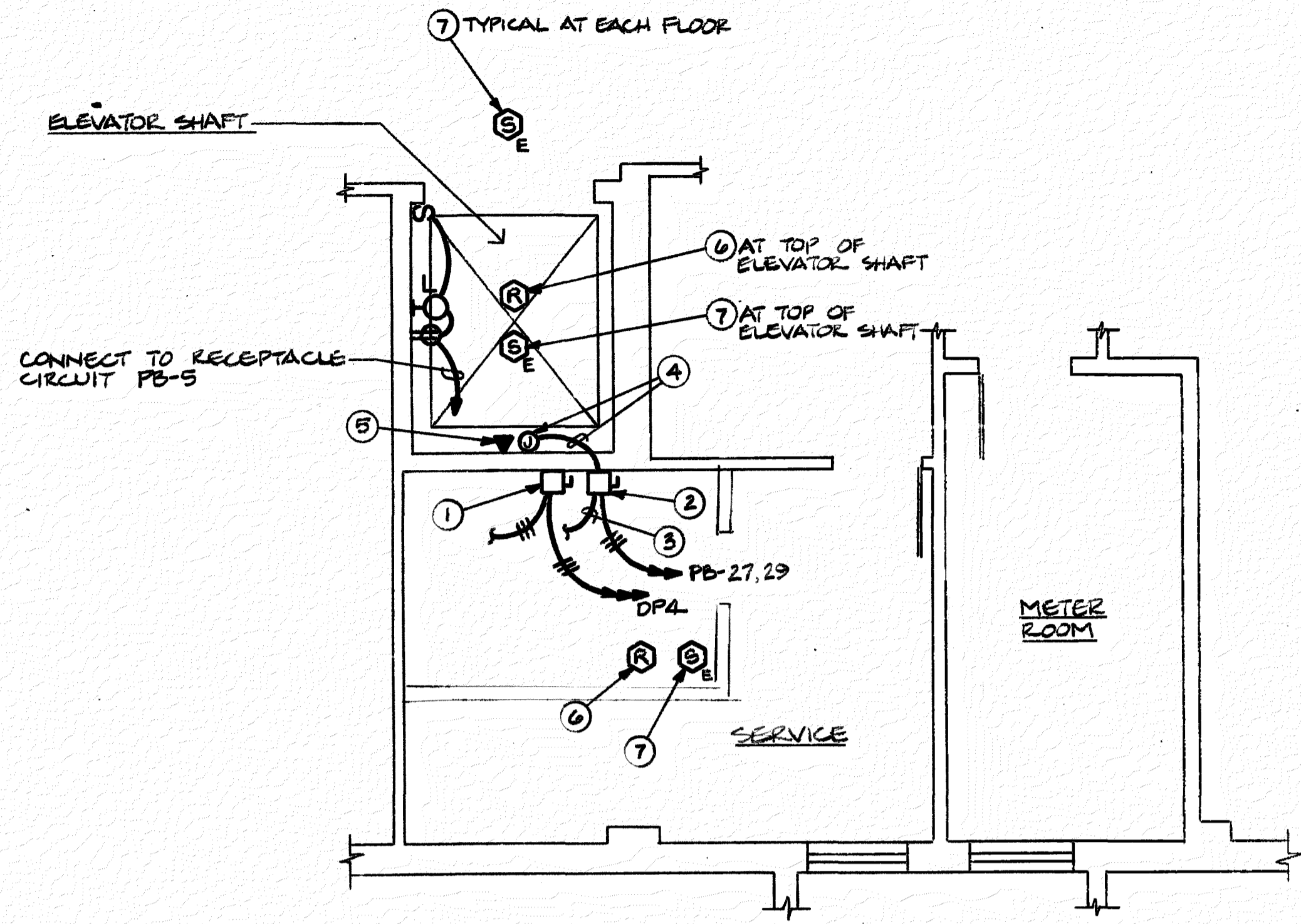


NO.	DATE	REVISION



BASEMENT FLOOR PLAN - POWER
SCALE: 1/4"=1'-0"



PART PLAN ELEVATOR & METER ROOMS
SCALE: 1/4"=1'-0"

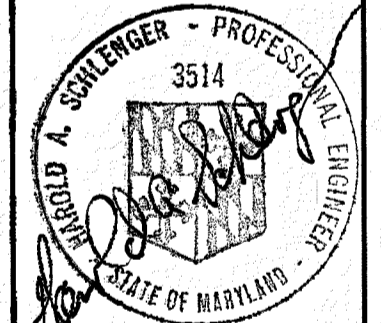
PART PLAN NOTES

- ① 3 POLE, 125 AMP FUSED SWITCH W/ FUSES AS RECOMMENDED BY ELEVATOR MANUFACTURER. MAKE FINAL CONNECTIONS TO MOTOR AS DIRECTED.
- ② 2 POLE, 30 AMP FUSED SWITCH W/ 20 AMP FUSES FOR ELEVATOR CONTROLLER AND CAB.
- ③ CONNECT 120 VOLT TO ELEVATOR CONTROLLER.
- ④ CONNECT 120 VOLT TO ELEVATOR CAB (VERIFY CONNECTION POINT).
- ⑤ PROVIDE OUTLET BOX AND CONDUIT FROM MAIN BACKBOARD FOR ELEVATOR PHONE (VERIFY CONNECTION POINT).
- ⑥ RATE-OF-RISE HEAT DETECTOR W/ AUXILIARY CONTACTS FOR CONNECTIONS TO ELEVATOR C/B SHUNT TRIP.
- ⑦ SMOKE DETECTOR W/ AUXILIARY CONTACTS FOR CONNECTION TO ELEVATOR CONTROLS FOR INITIATION OF RECALL SEQUENCE.

APPROVED
ELECTRICAL
MECH.
CONST.
FINAL
ISSUED
J. James 9.27.90

RECEIVED
DEPT. OF HOUSING
AND COMMUNITY DEVELOPMENT
AUG 20 1990
No. 810

PERMIT SET



BASEMENT LEVEL
FLOOR PLANS SHEET
REGIONAL PLANNING COUNCIL
GREYHOUND STATION PROJECT

GOULD ARCHITECTS, P.A.
518 N. Charles Street Baltimore, Maryland 21201
301-244-0070

8-20-90 DATE
AS NOTED SCALE
DRAWN
BINDING ORDER

E-1

SCHLENGER/PITZ INC.
Consulting Engineers
3000 Chestnut Ave.
Suite 14, The Mill Centre
Baltimore, Maryland 21211
Bal: (301) 467-1781 Fax: (301) 467-1384