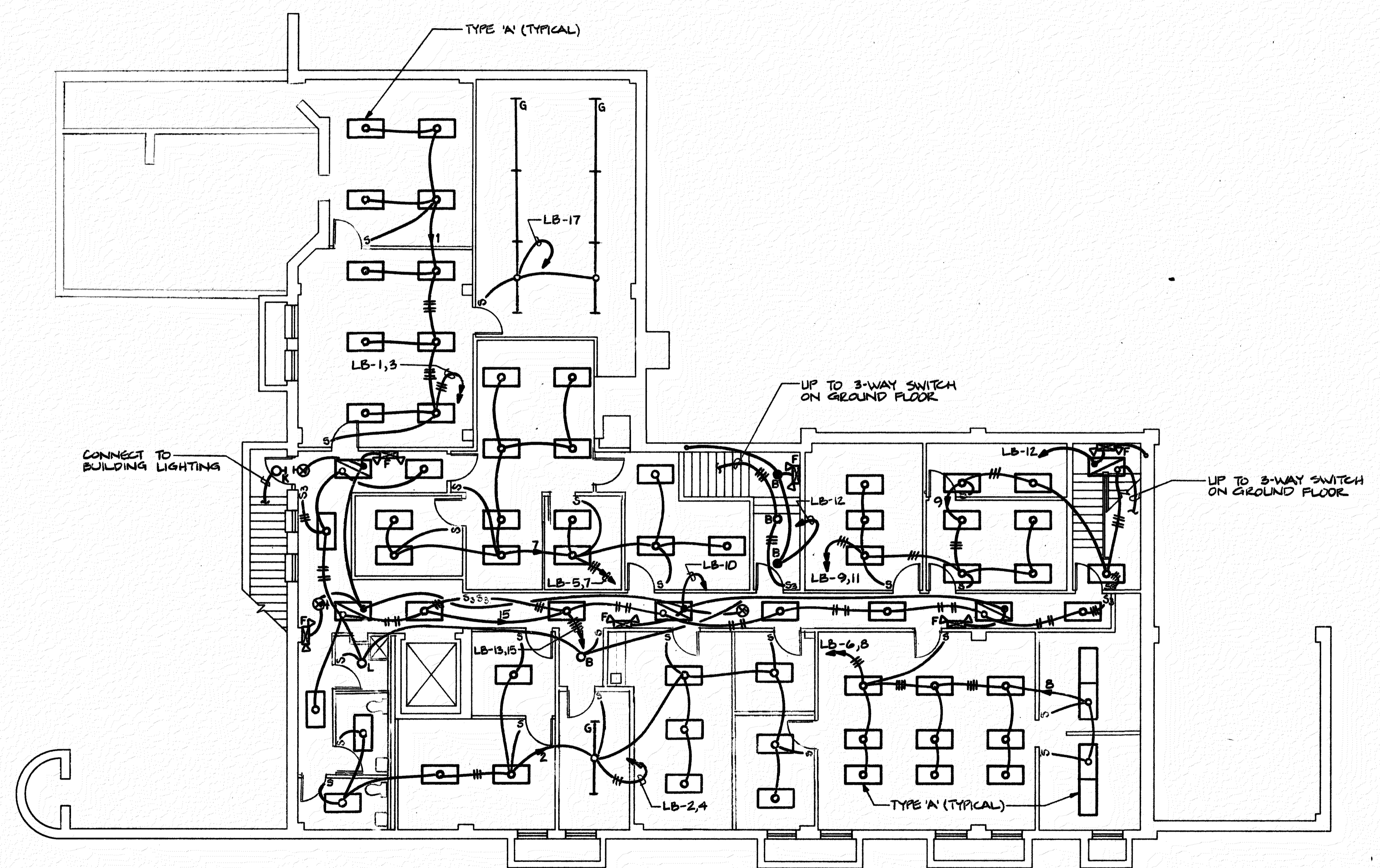


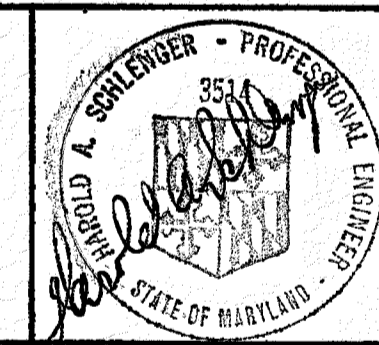
NO.	DATE	REVISION



**BASEMENT FLOOR PLAN - LIGHTING**  
SCALE: 1/8" = 1'-0"

RECEIVED  
DEPT. OF HOUSING  
AND COMMUNITY DEVELOPMENT  
AUG 20 1990  
**No. 810**

PERMIT SET



BASEMENT LEVEL  
**FLOOR PLANS** SHEET  
**REGIONAL PLANNING COUNCIL**  
GREYHOUND STATION PROJECT

**APPROVED**  
S. Carlos 9.27.90  
ELEC. \_\_\_\_\_  
MECH. \_\_\_\_\_  
CONST. \_\_\_\_\_  
FINAL \_\_\_\_\_  
ISSUED \_\_\_\_\_

**COULD ARCHITECTS, P.A.**  
518 N. Charles Street, Baltimore, Maryland 21201  
301-244-0070

**SCHLENGER/PITZ INC.**  
Consulting Engineers  
3000 Chestnut Ave.  
Suite 14, The Mill Centre  
Baltimore, Maryland 21211  
Bal: (301) 467-1781 Fax: (301) 467-1334

8-20-90 DATE  
1/8" = 1'-0" SCALE  
DRAWN  
BINDING ORDER

**E-2**