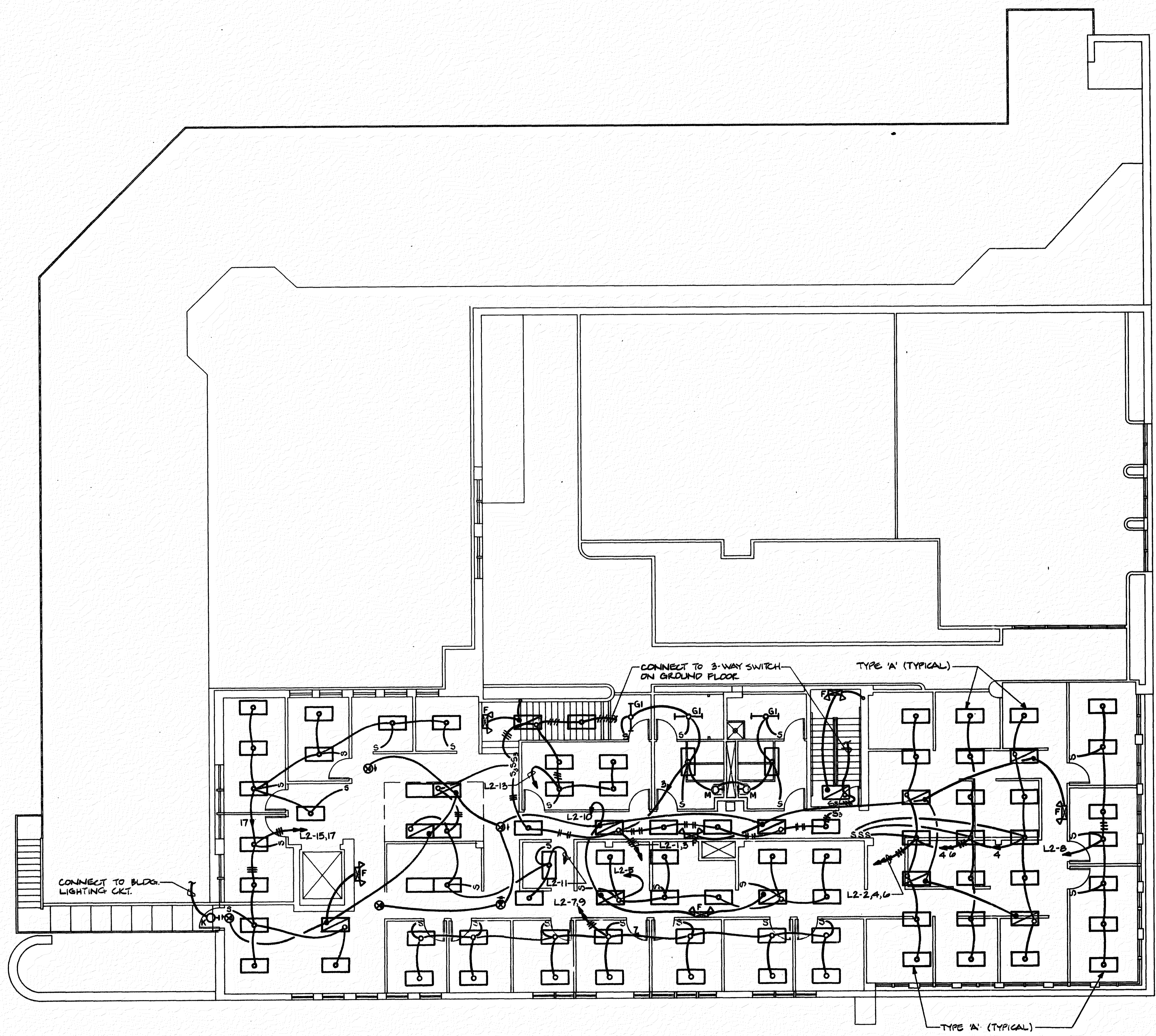
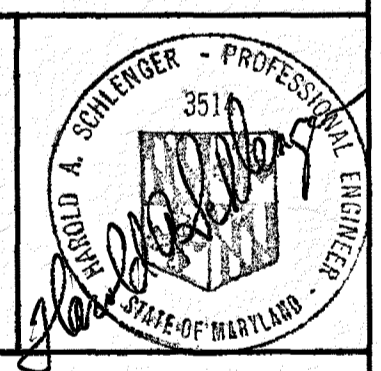


NO.	DATE	REVISION



**SECOND FLOOR PLAN - LIGHTING**  
 SCALE: 1/8"=1'-0"

RECEIVED  
 DEPT. OF HOUSING  
 AND COMMUNITY DEVELOPMENT  
 AUG 25 1990  
**No. 810**  
 PERMIT SET



APPROVED  
 DIRECTOR - CONSTRUCTION  
 ELEC. *J. Santos* 9.27.90  
 MECH.  
 CONST.  
 FINAL  
 ISSUED

SECOND LEVEL  
 FLOOR PLANS  
 REGIONAL  
 PLANNING  
 COUNCIL  
 GREYHOUND STATION  
 PROJECT

**GOULD ARCHITECTS, P.A.**  
 518 N. Charles Street, Baltimore, Maryland 21201  
 301-244-0070

**SCHLENGER/PITZ INC.**  
 Consulting Engineers  
 3000 Chestnut Ave.  
 Suite 14, The Mill Centre  
 Baltimore, Maryland 21211  
 Tel: (301) 467-1781 Fax: (301) 467-1334

8.20.90 DATE  
 1/8"=1'-0" SCALE  
 DRAWN  
 BINDING ORDER

**E-6**