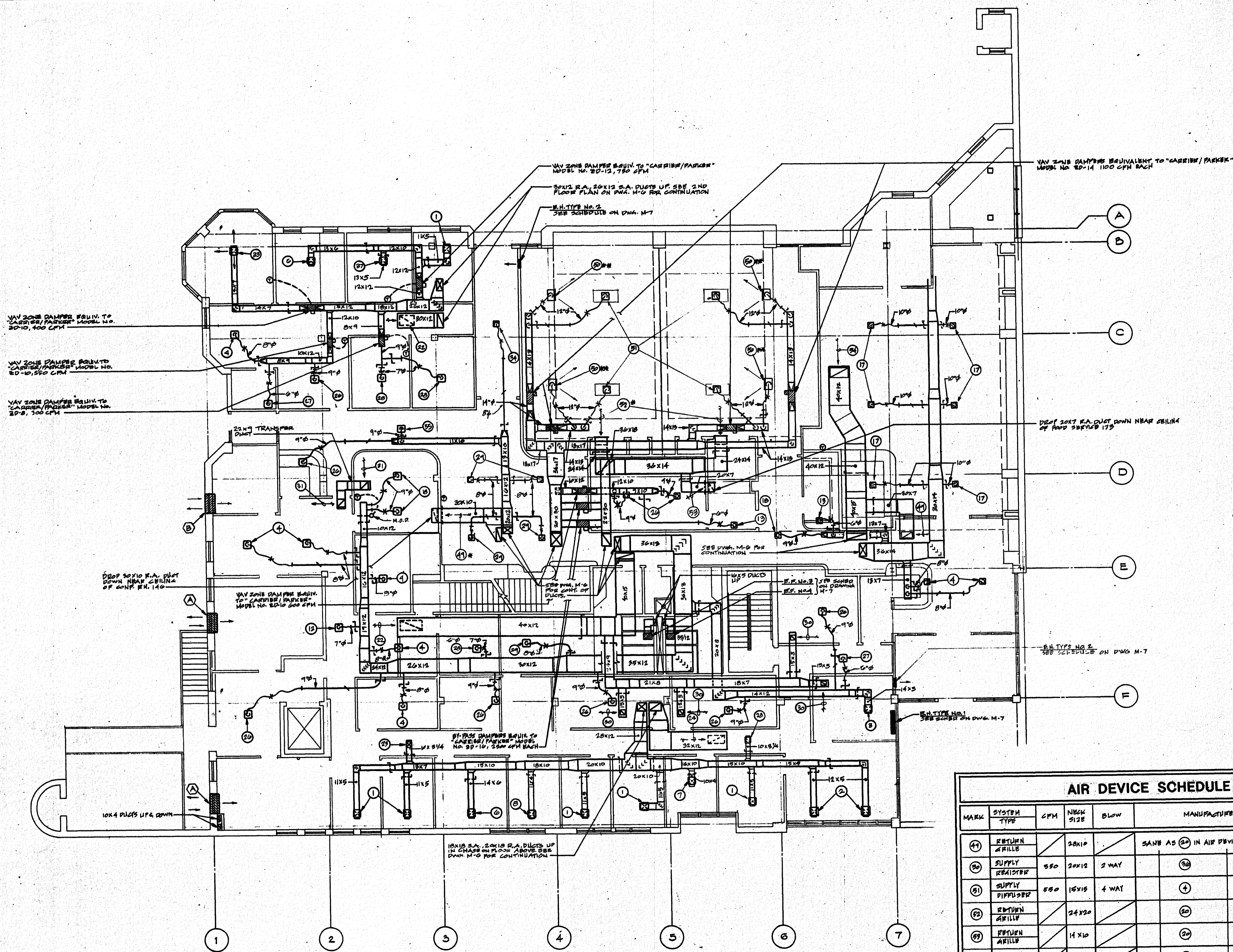


NO.	DATE	REVISION



**GROUND FLOOR PLAN**  
SCALE: 1/8"=1'-0"

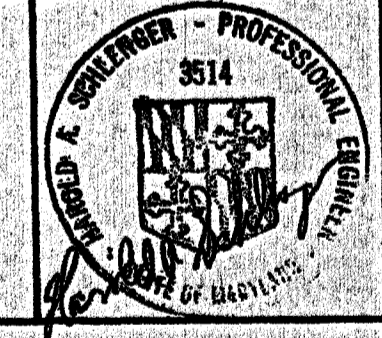
\* - MOUNT ON FACE OF WALL NEAR CEILING  
\*\* - MOUNT ON BASE OF WALL WITH BOTTOM OF AIRWAY APPROXIMATELY 12"-20" ABOVE FINISHED FLOOR

AIR DEVICE SCHEDULE					
MARK	SYSTEM TYPE	CFM	NECK SIZE	BLOW	MANUFACTURER & MODEL NO.
41	RETURN AIRILE		20x10		SAME AS 20 IN AIR DEVICE SCHED. ON DWG. M-7
20	SUPPLY REGISTER	550	20x12	2 WAY	20
21	SUPPLY DIFFUSER	550	15x15	4 WAY	4
22	RETURN AIRILE		24x20		20
23	RETURN AIRILE		14x10		20
24	RETURN AIRILE		30x32		20

NOTE: SEE DWG. M-7 FOR AIR DEVICE SCHEDULE

RECEIVED  
DEPT. OF HOUSING  
AND COMMUNITY DEVELOPMENT  
AUG 30 1990  
No.

**APPROVED**  
ELEC. MECH. CONST. FINAL ISSUED  
SEP 7 1990



**GROUND FLOOR PLAN H.V.A.C.**

REGIONAL PLANNING COUNCIL  
GREYHOUND STATION PROJECT

**COULD ARCHITECTS P.A.**  
518 N. Charles Street, Baltimore, Maryland 21201  
301-244-0070

8-20-90 DATE  
1/8"=1'-0" SCALE  
DRAWN  
M-5  
BINDING ORDER