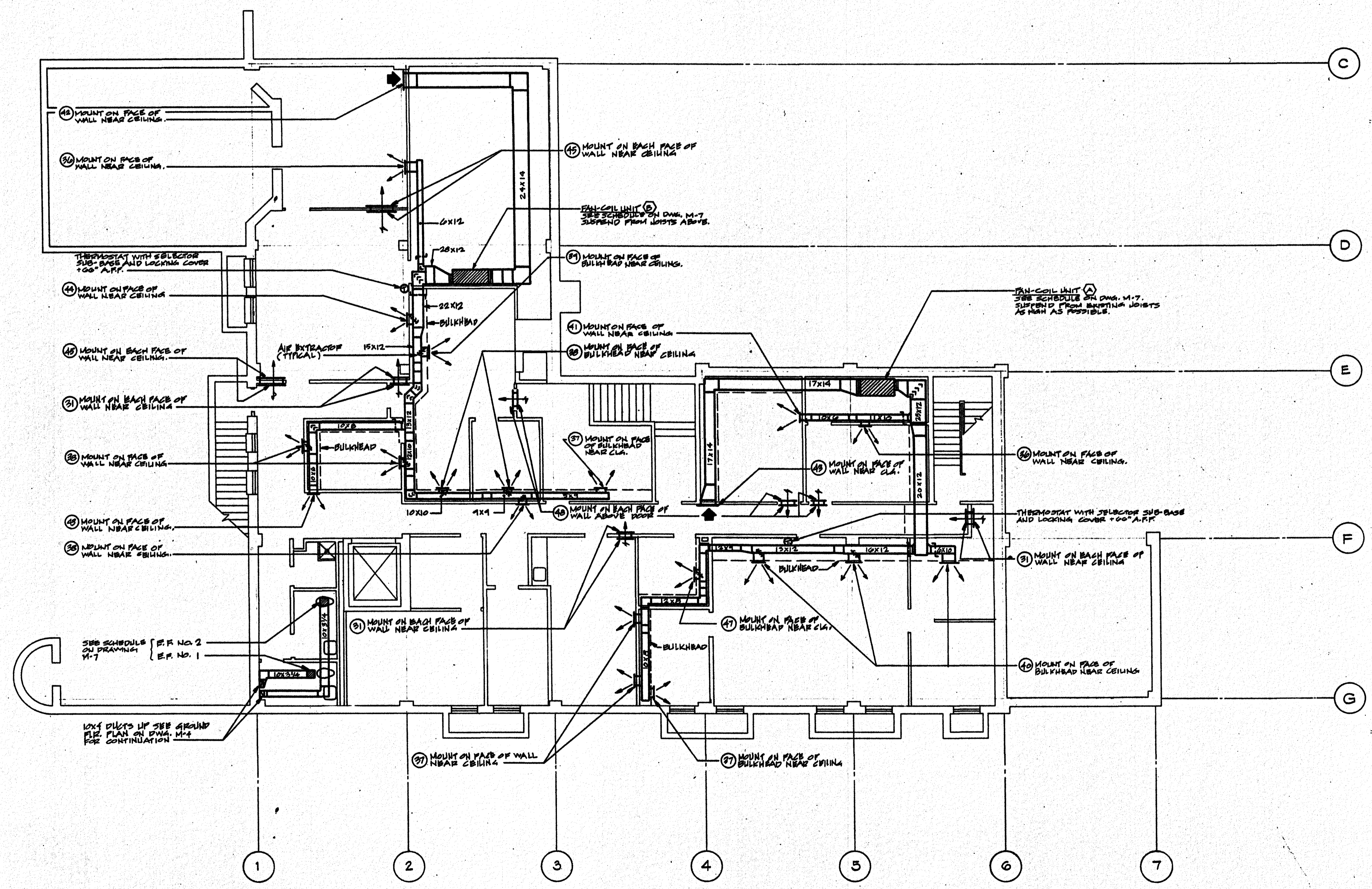


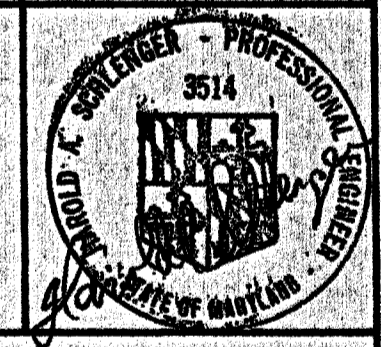
NO.	DATE	REVISION



BASEMENT PLAN
SCALE: 1/8"=1'-0"

RECEIVED
DEPT. OF HOUSING
AND COMMUNITY DEVELOPMENT
AUG. 24 1990
No.

PERMIT SET



BASEMENT PLAN
H.V.A.C.

REGIONAL
PLANNING
COUNCIL
GREYHOUND STATION
PROJECT

COULD ARCHITECTS, P.A.
518 N. Charles Street, Baltimore, Maryland 21201
301-244-0070

APPROVED
DIRECTOR - CONSTRUCTION
& PLUMBING INSPECTION
DATE
ELEC. 3/12/90
MECH. 3/12/90
CONST. 3/12/90
FINAL
ISSUED

8.20.90	DATE	M-4
1/8"=1'-0"	SCALE	
	DRAWN	BINDING ORDER

SCHLENGER/PITZ, INC.
Consulting Engineers
3000 Chestnut Ave.
Suite 14, The Mill Centre
Baltimore, Maryland 21211
Tel: (410) 427-2784 Fax: (410) 427-2884