



**J. T. FISHMAN & ASSOCIATES**  
 ARCHITECTS-PLANNERS  
 6 CORSET HILL COURT  
 OWINGS MILLS, MARYLAND, 21117  
 (410) 591-5800 FAX: (410) 286-1572  
 PROFESSIONAL CERTIFICATION  
 I CERTIFY THAT THESE DOCUMENTS WERE  
 PREPARED OR APPROVED BY ME, AND THAT I AM  
 DULY LICENSED ARCHITECT UNDER THE LAWS OF  
 THE STATE OF MARYLAND.  
 LICENSE # 9345 EXP. DATE 09/17/19

# GALLOWAY CREEK CONDOMINIUMS

1414 BURKE ROAD  
 BOWLEYS QUARTERS-GALLOWAY CREEK  
 BALTIMORE COUNTY, MARYLAND

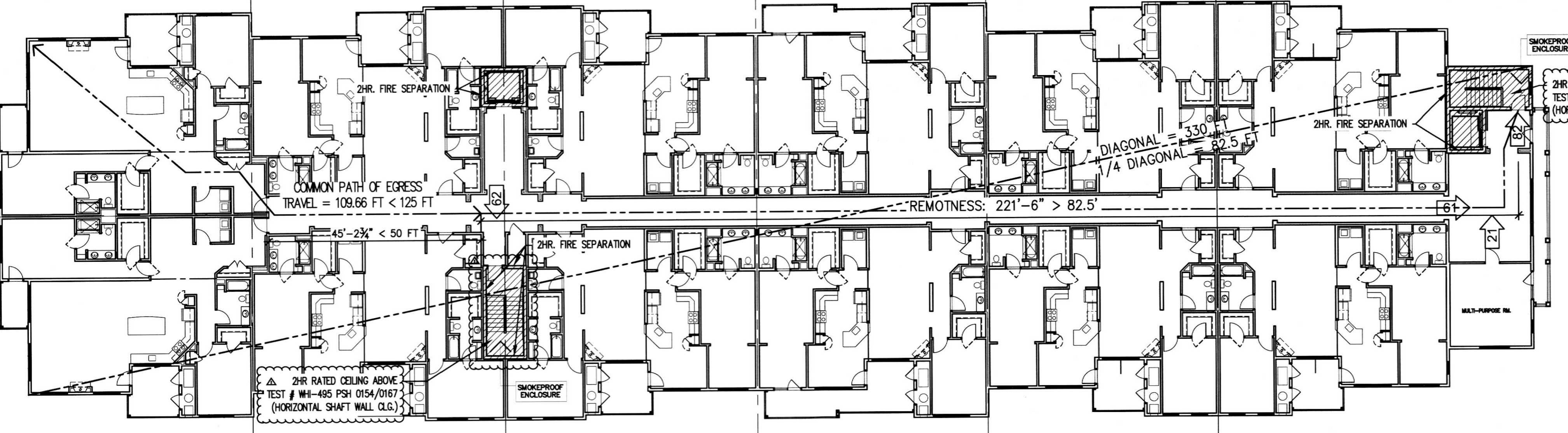
THESE DRAWINGS ARE THE PROPERTY OF  
 J. T. FISHMAN & ASSOCIATES. UNAUTHORIZED  
 REPRODUCTION FOR ANY PURPOSE IS AN  
 INFRINGEMENT UPON COPYRIGHT LAWS. VIOLATORS  
 WILL BE SUBJECT TO PROSECUTION BY THE FULLEST  
 EXTENT OF THE LAW.

WRITTEN DIMENSIONS ON THESE DRAWINGS SHALL  
 TAKE PRECEDENCE OVER SCALE DIMENSIONS.  
 CONTRACTORS SHALL VERIFY & BE RESPONSIBLE  
 FOR ALL DIMENSIONS AND CONDITIONS ON THE JOB.  
 THIS OFFICE MUST BE NOTIFIED BY ANY VARIATION  
 FROM THE DIMENSIONS AND CONDITIONS SHOWN BY  
 THESE DRAWINGS.

**CONTENT:**  
 LIFE SAFETY &  
 BUILDING CODE  
 INFORMATION  
 © 2018 J. T. FISHMAN & ASSOCIATES

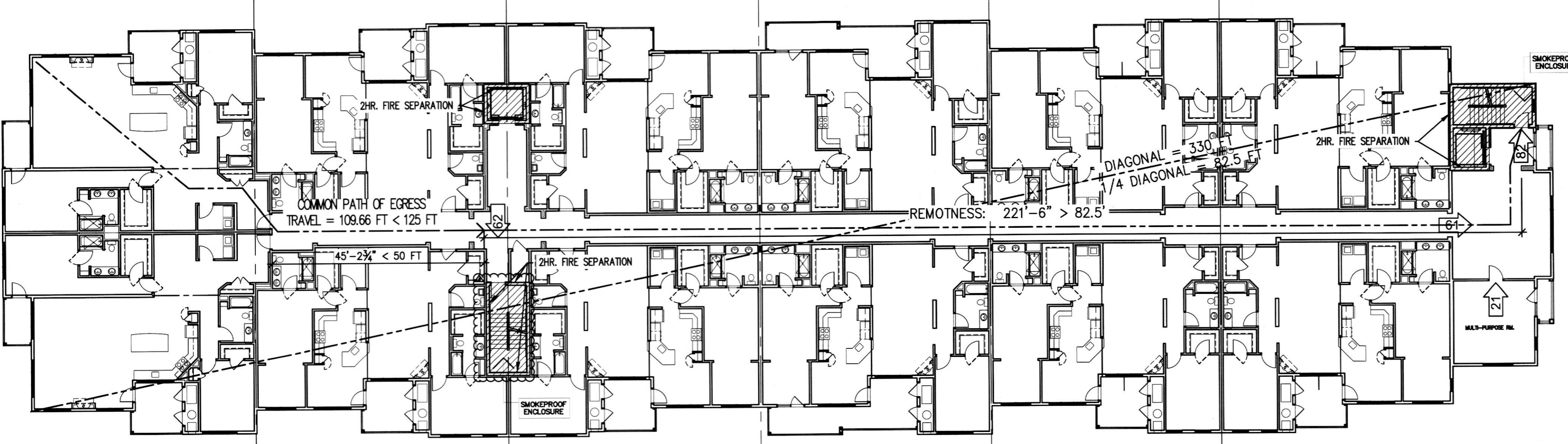
NO.	DATE	ISSUE
1	11-28-18	BALTO CD COMMENTS

DATE: 8-20-18  
 SCALE: AS NOTED  
 PROJECT NO.: 150101



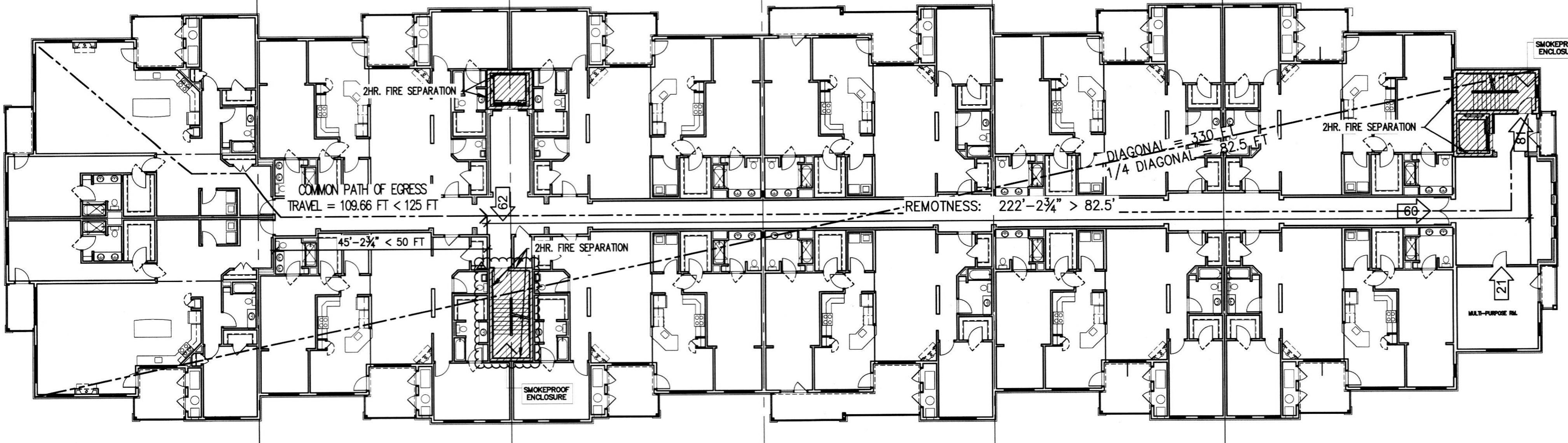
**4 THIRD FLOOR PLAN**  
 A-0 1/16" = 1'-0"

OCCUPANCY GROUP: R-2  
 TYPE 5B CONSTRUCTION  
 TOTAL FLOOR AREA = 24,792 SF GROSS  
 RESIDENTIAL: 24,487 SF + ASSEMBLY (MULTI-PURPOSE RM.): 305 SF  
 OCCUPANT LOAD FACTOR:  
 RESIDENTIAL = 200 SF 24,487/200=123  
 ASSEMBLY AREAS = 15 SF 305/15=21  
 TOTAL OCCUPANT LOAD = 144  
 EXIT ACCESS TRAVEL DISTANCE = 122' < 250'  
 TRAVEL DISTANCE FROM DWELLING UNIT TO NEAREST EXIT = < 200'



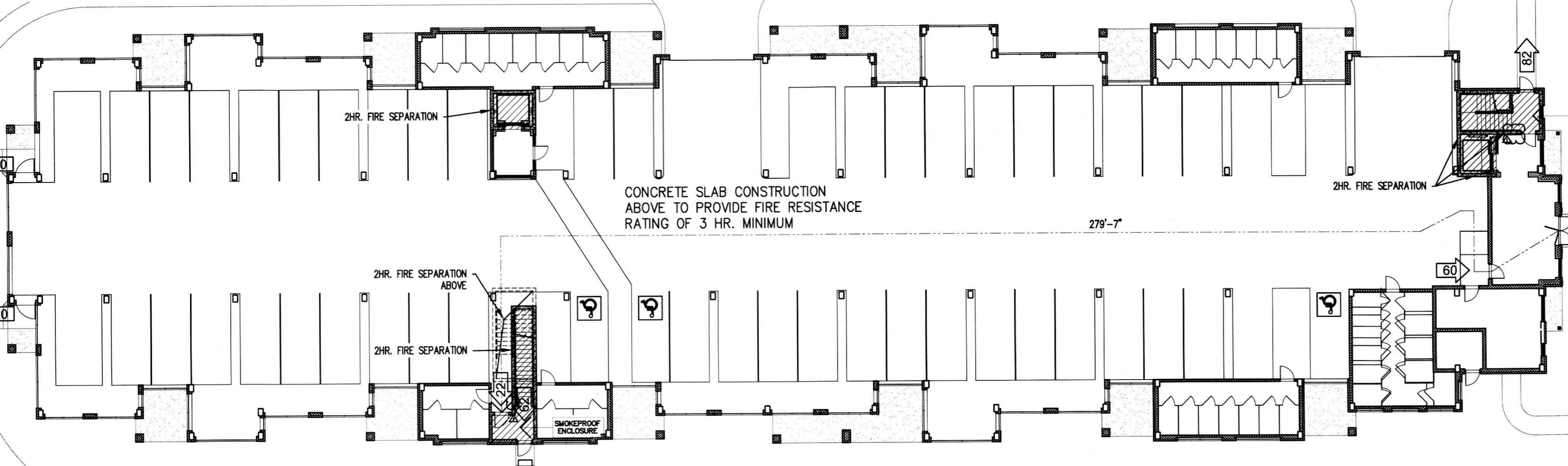
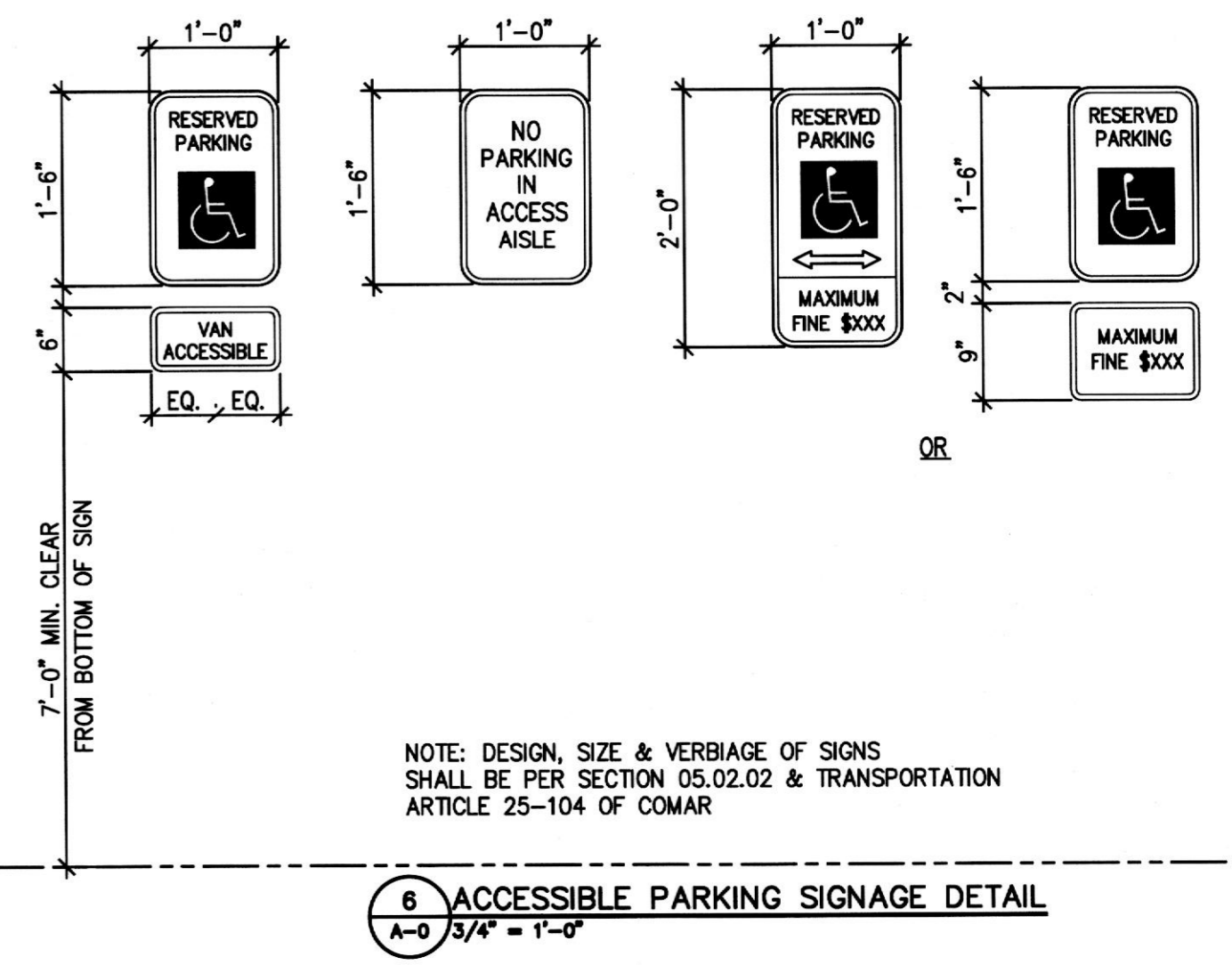
**3 SECOND FLOOR PLAN**  
 A-0 1/16" = 1'-0"

OCCUPANCY GROUP: R-2  
 TYPE 5B CONSTRUCTION  
 TOTAL FLOOR AREA = 24,873 SF GROSS  
 RESIDENTIAL: 24,568 SF + ASSEMBLY (MULTI-PURPOSE RM.): 305 SF  
 OCCUPANT LOAD FACTOR:  
 RESIDENTIAL = 200 SF 24,568/200=123  
 ASSEMBLY AREAS = 15 SF 305/15=21  
 TOTAL OCCUPANT LOAD = 144  
 EXIT ACCESS TRAVEL DISTANCE = 122' < 250'  
 TRAVEL DISTANCE FROM DWELLING UNIT TO NEAREST EXIT = < 200'



**2 FIRST FLOOR PLAN**  
 A-0 1/16" = 1'-0"

OCCUPANCY GROUP: R-2  
 TYPE 5B CONSTRUCTION  
 TOTAL FLOOR AREA = 24,745 SF GROSS  
 RESIDENTIAL: 24,440 SF + ASSEMBLY (MULTI-PURPOSE RM.): 305 SF  
 OCCUPANT LOAD FACTOR:  
 RESIDENTIAL = 200 SF 24,440/200=122  
 ASSEMBLY AREAS = 15 SF 305/15=21  
 TOTAL OCCUPANT LOAD = 143  
 EXIT ACCESS TRAVEL DISTANCE = 122' < 250'  
 TRAVEL DISTANCE FROM DWELLING UNIT TO NEAREST EXIT = < 200'



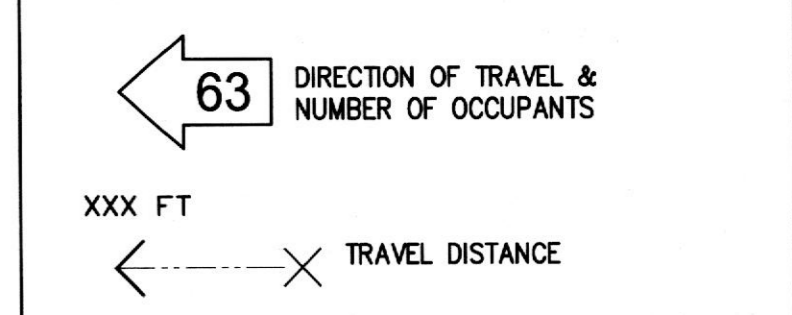
**1 PARKING LEVEL PLAN**  
 A-0 1/16" = 1'-0"

OCCUPANCY GROUP: S-2 (open parking garage under R2 occupancy)  
 TYPE I CONSTRUCTION  
 FLOOR AREA = 25,219 SF GROSS  
 OCCUPANT LOAD FACTOR: 200 SF  
 TOTAL OCCUPANT LOAD = 126  
 EXIT ACCESS TRAVEL DISTANCE < 400'

**OPEN PARKING GARAGE CALCULATIONS:**  
 TOTAL PERIMETER OF PARKING TIER (Pt)=1009'  
 40%(Pt)=404.0'=MIN REQUIRED OPEN PERIMETER  
 ACTUAL OPEN PERIMETER=504'  
 TOTAL WALL AREA(At)=Pt x 13'=13,117sf  
 20%(At)=2,623.4sf=MIN REQUIRED OPEN WALL AREA  
 ACTUAL OPEN AREA=504' x 8.83'=4,450sf

**KEY: FIRE RATED ENCLOSURES & EXIT PLAN**

	1 HR. FIRE RATED ENCLOSURE STC=50 TO 54 BASED ON UL R14196, OSN05371, 2-15-05, UL Design 11305 SOUND TEST: NRCC TL93-103, 3-98 NRCC TL93-118, 3-98 6" C.M.U. UL Des # U906
	2 HR. FIRE RATED ENCLOSURE 8" CONCRETE WALL; FIRE TEST# ITS 220-06170.3, 12-00 8" C.M.U. UL Des # U905



PENDING FEMA APPROVAL