



8/20/18

J.T. FISHMAN & ASSOCIATES
ARCHITECTS-PLANNERS
 6 DORSET HILL COURT, SUITE 21117
 OWING MILLS, MD 21117
 (410) 583-5800 FAX (410) 286-1572

PROFESSIONAL SELECTION NUMBER: 150101
 LICENSED ARCHITECT UNDER THE LAWS OF MARYLAND
 LICENSE # 9917/19
 LICENSE EXPIRES 8/31/2023

GALLOWAY CREEK CONDOMINIUMS

1414 BURKE ROAD
 BOWLEYS QUARTERS-GALLOWAY CREEK
 BALTIMORE COUNTY, MARYLAND

THESE DRAWINGS ARE THE PROPERTY OF J.T. FISHMAN & ASSOCIATES. UNAUTHORIZED REPRODUCTION FOR ANY PURPOSE IS AN INFRINGEMENT UPON COPYRIGHT LAWS. VIOLATORS WILL BE SUBJECT TO PROSECUTION BY THE FULLEST EXTENT OF THE LAW.

WRITTEN DIMENSIONS ON THESE DRAWINGS SHALL TAKE PRECEDENCE OVER SCALE DIMENSIONS. CONTRACTORS SHALL VERIFY & BE RESPONSIBLE FOR ALL DIMENSIONS AND CONDITIONS ON THE JOB. THE OFFICE SHALL BE NOTIFIED OF ANY VARIATION FROM THE DIMENSIONS AND CONDITIONS SHOWN BY THESE DRAWINGS.

CONTENT:
 UNIT PLANS & DETAILS

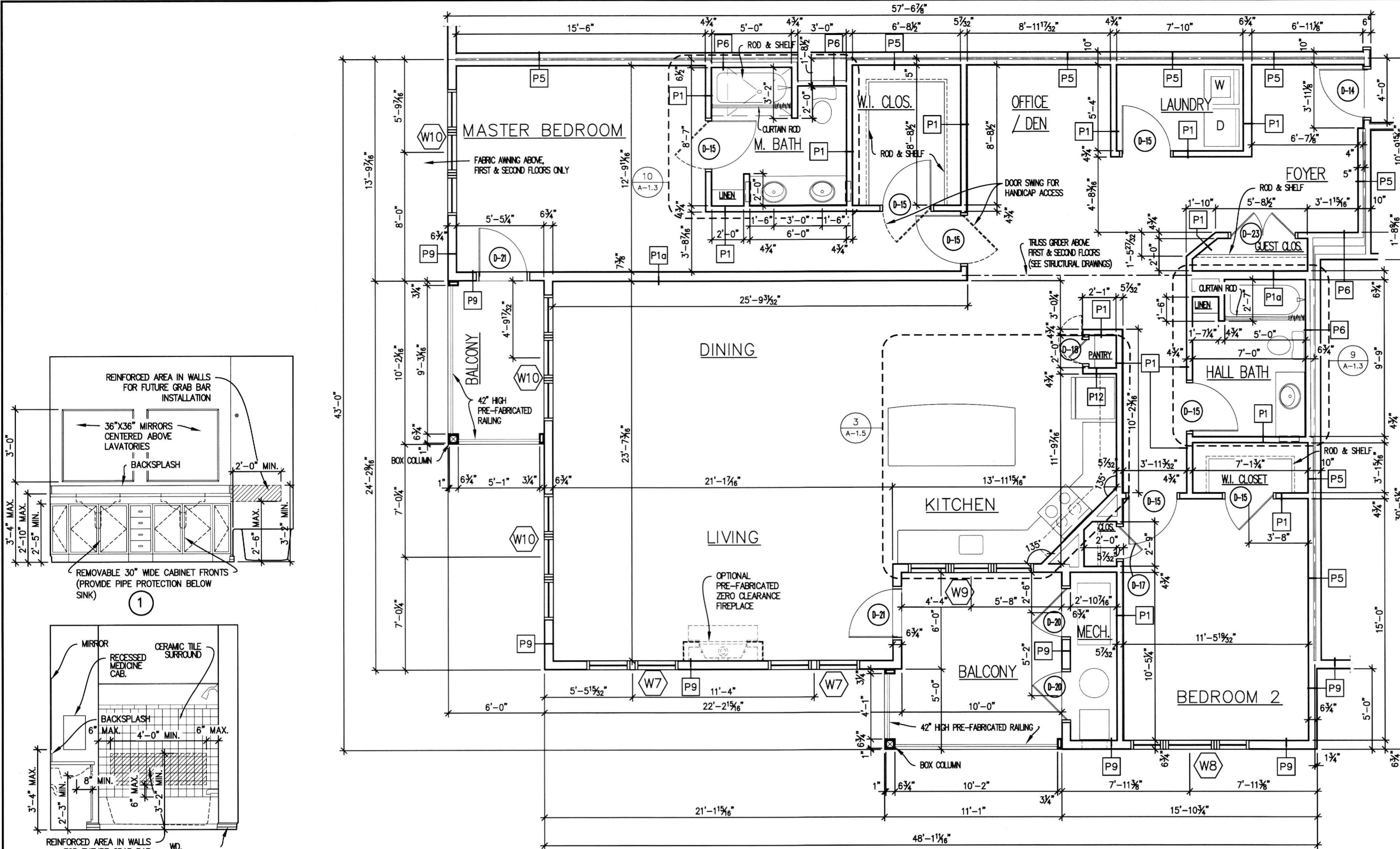
© 2018 J.T. FISHMAN & ASSOCIATES

NO.	DATE	ISSUE

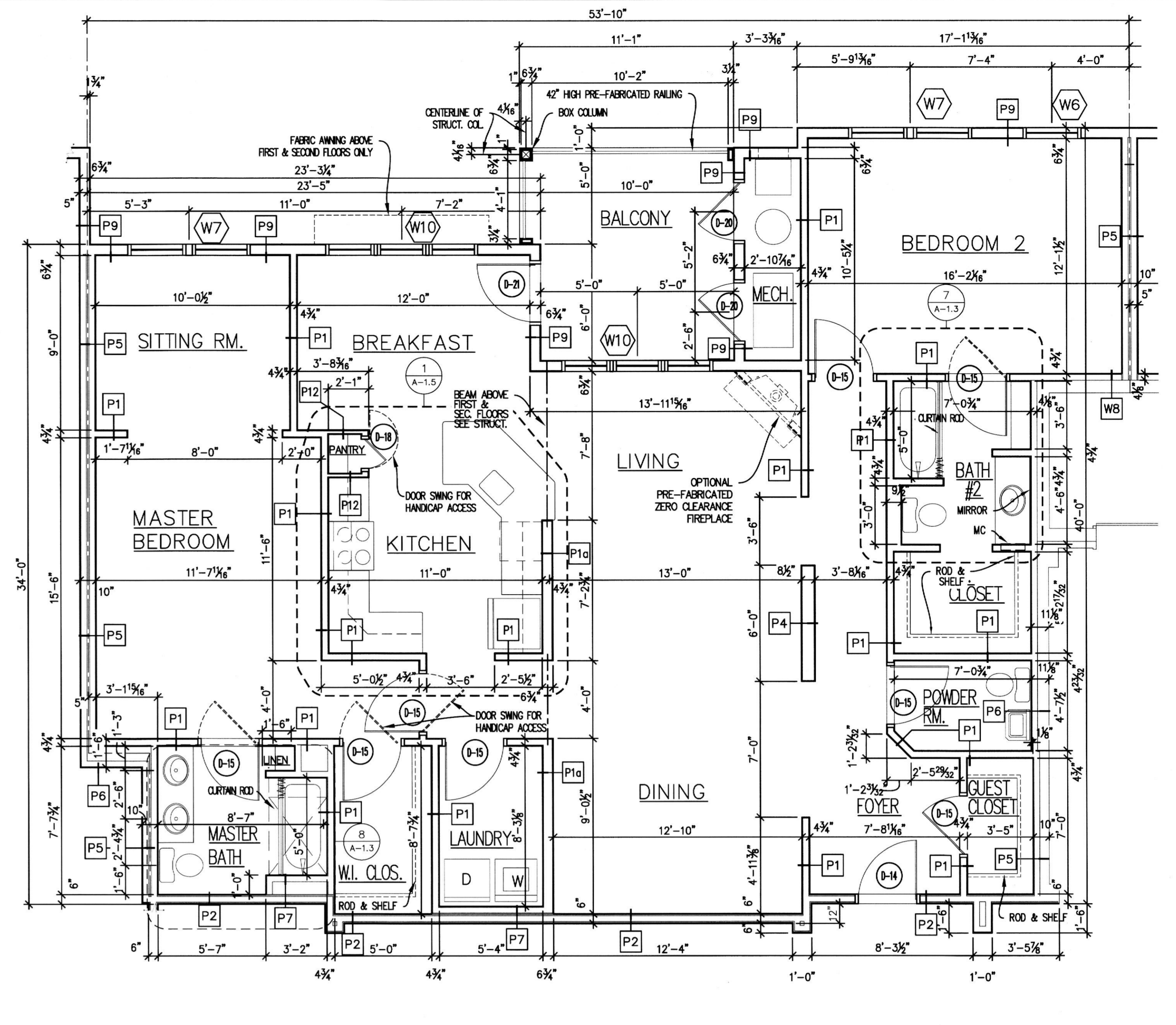
DATE: 8-20-2018
 SCALE: AS NOTED
 PROJECT NO.: 150101

A-1.4

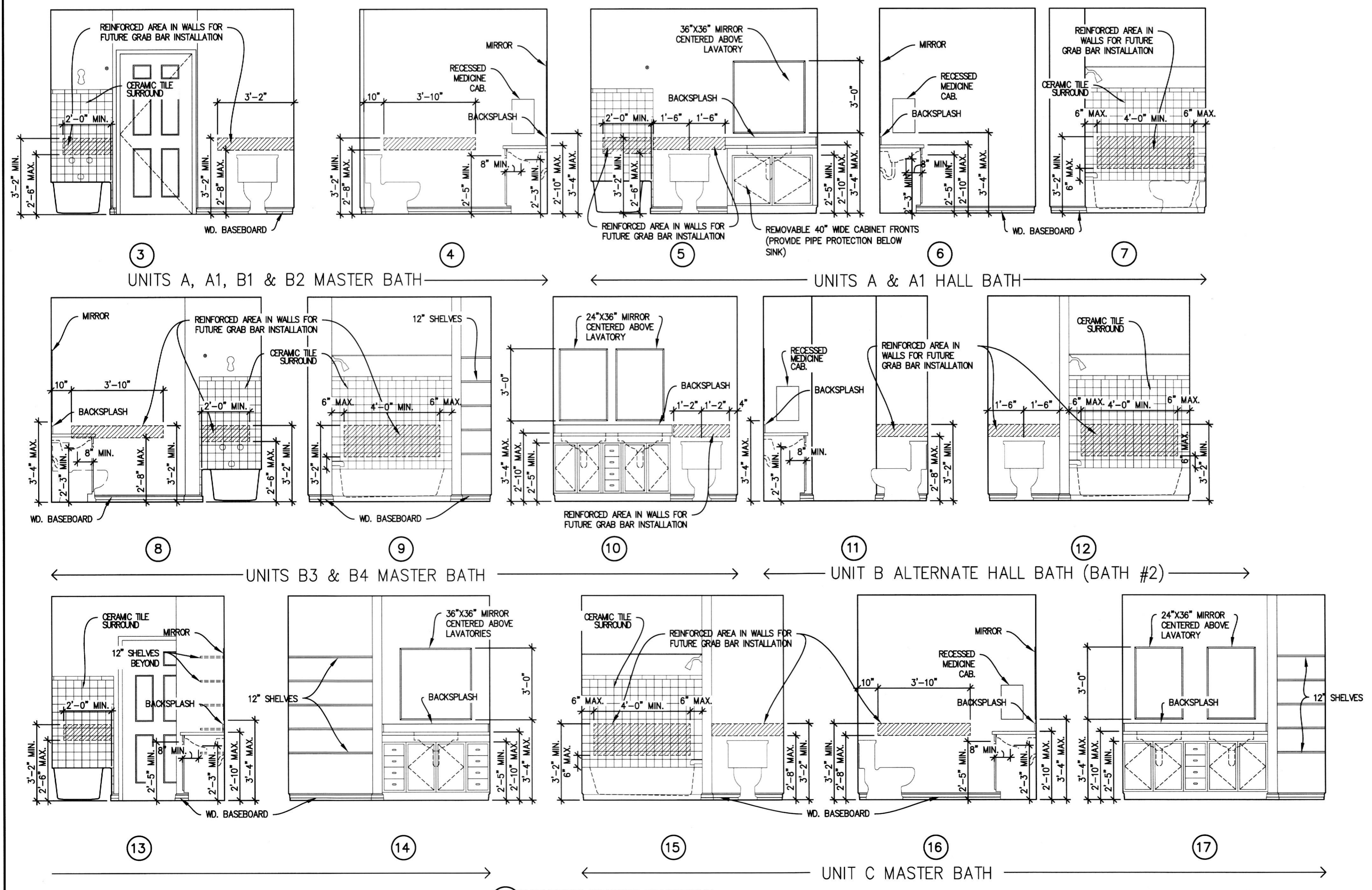
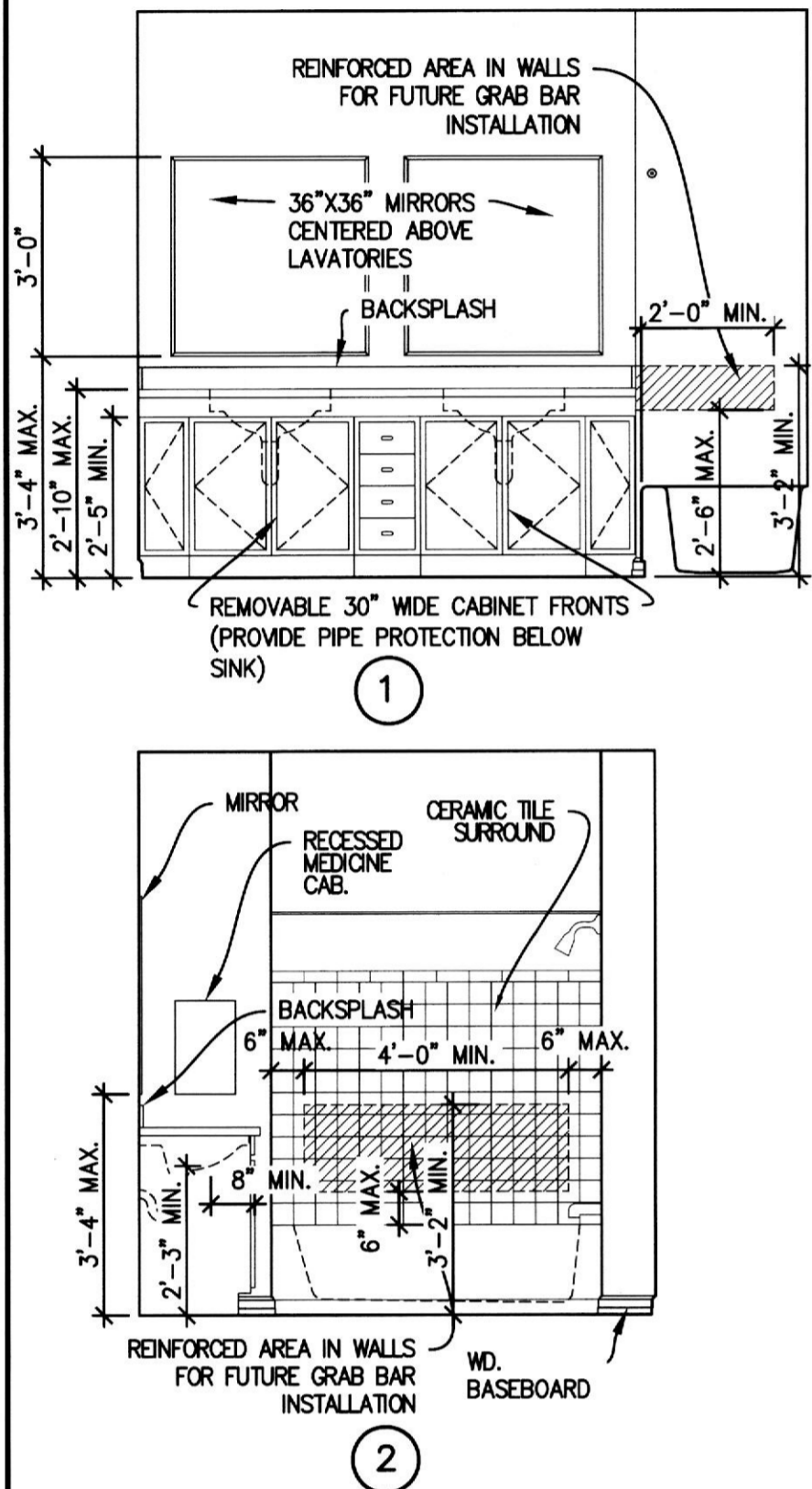
SHEET 7 OF 19



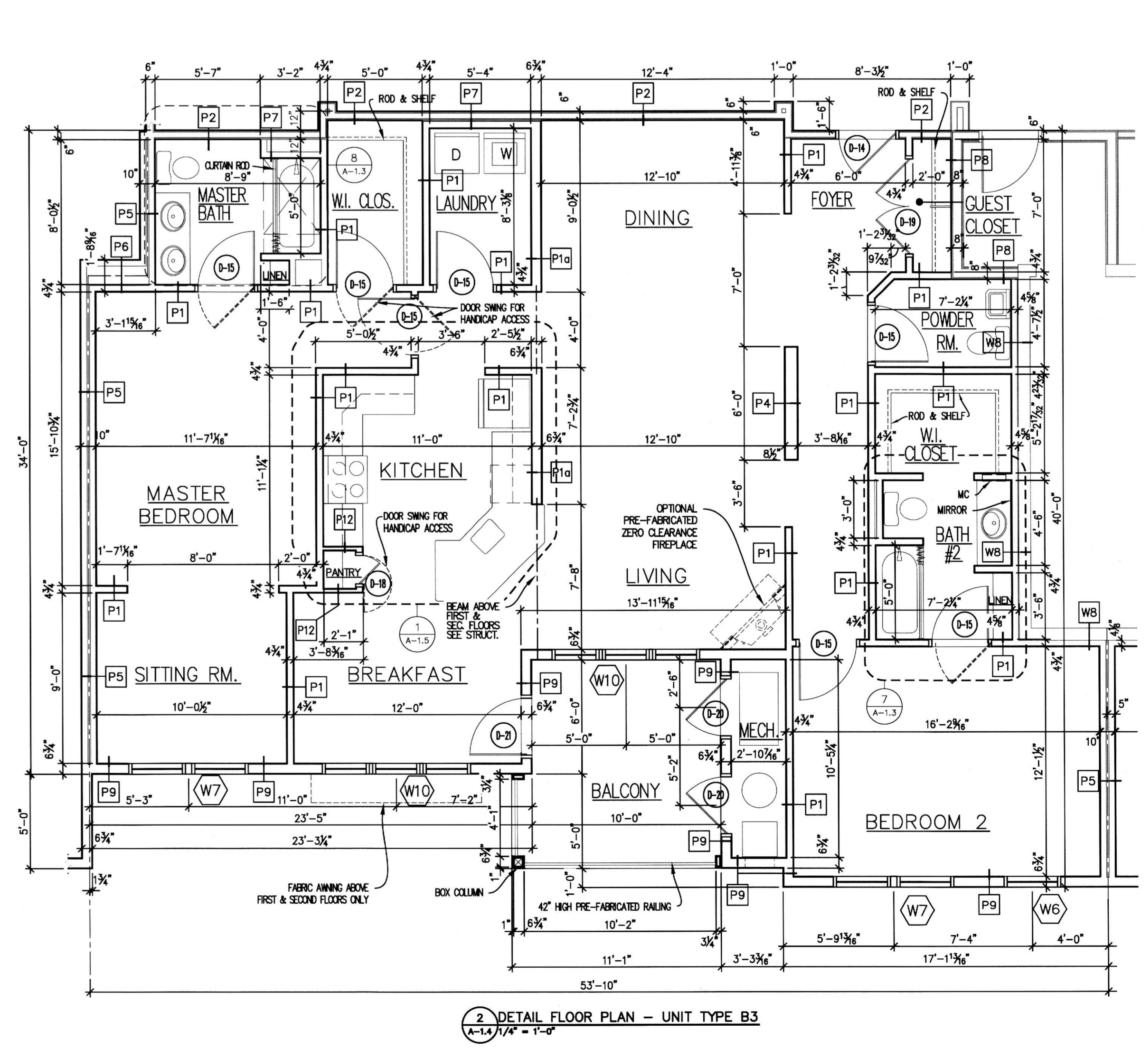
3 DETAIL FLOOR PLAN - UNIT TYPE C
 A-1.4 1/4" = 1'-0"



1 DETAIL FLOOR PLAN - UNIT TYPE B4
 A-1.4 1/4" = 1'-0"



5 BATHROOM INTERIOR ELEVATIONS
 A-1.4 3/8" = 1'-0"



2 DETAIL FLOOR PLAN - UNIT TYPE B3
 A-1.4 1/4" = 1'-0"