



**J.T. FISHMAN & ASSOCIATES**  
 ARCHITECTS/ENGINEERS  
 6 COURSEY WALK, SUITE 21117  
 OWINGTON, MD 21117  
 (410) 551-5500 FAX (410) 286-1572  
 PROFESSIONAL CERTIFICATION  
 LICENSED BY THE STATE OF MARYLAND  
 DULY LICENSED ARCHITECT UNDER THE LAWS OF  
 THE STATE OF MARYLAND  
 LICENSE # 5425 EXP. DATE 09/1719

# GALLOWAY CREEK CONDOMINIUMS

1414 BURKE ROAD  
 BOWLEYS QUARTERS-GALLOWAY CREEK  
 BALTIMORE COUNTY, MARYLAND

THESE DRAWINGS ARE THE PROPERTY OF J.T. FISHMAN & ASSOCIATES. UNAUTHORIZED REPRODUCTION FOR ANY PURPOSE IS AN INFRINGEMENT UPON COPYRIGHT LAWS. VIOLATORS WILL BE SUBJECT TO PROSECUTION BY THE FULLEST EXTENT OF THE LAW.

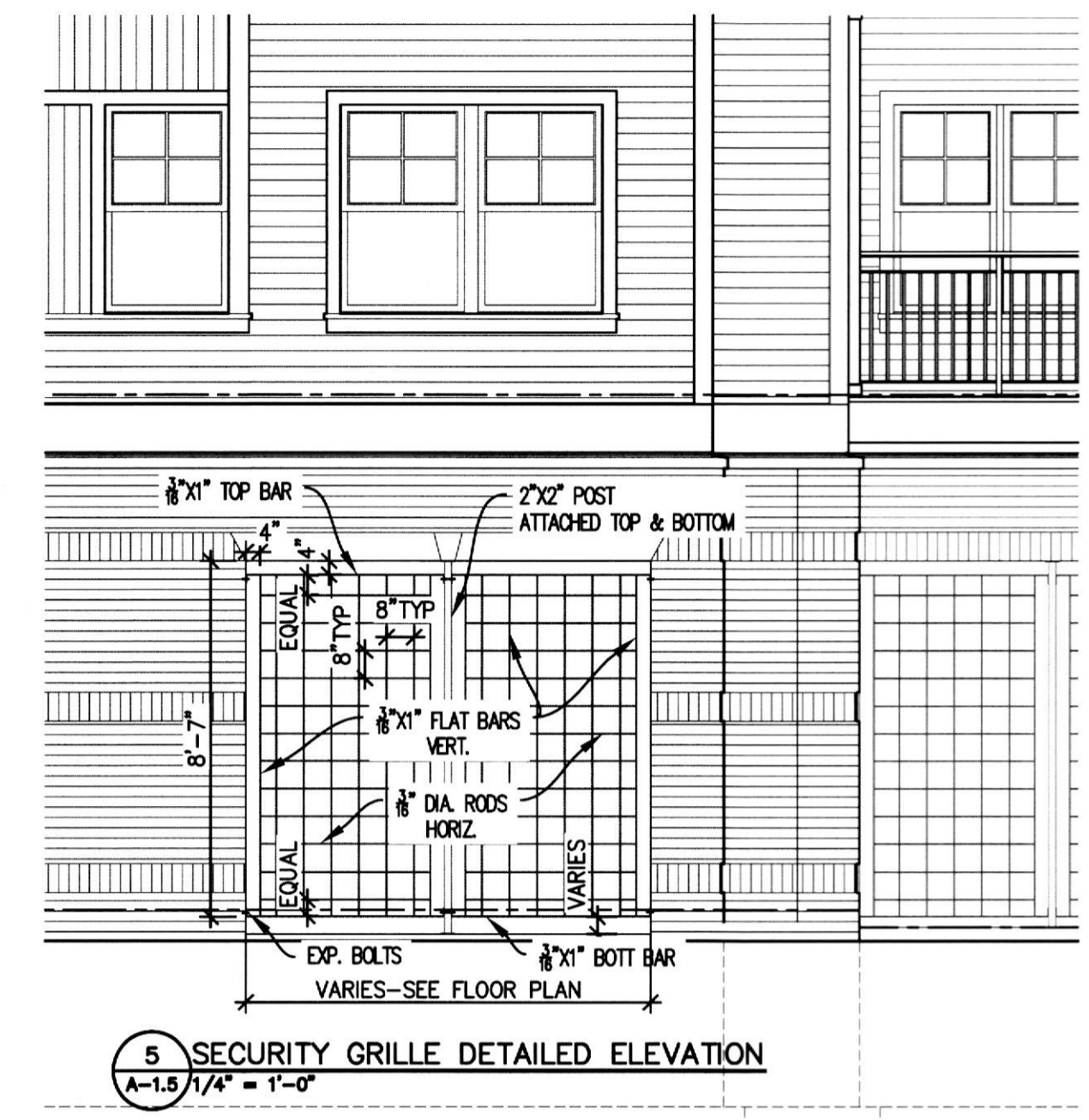
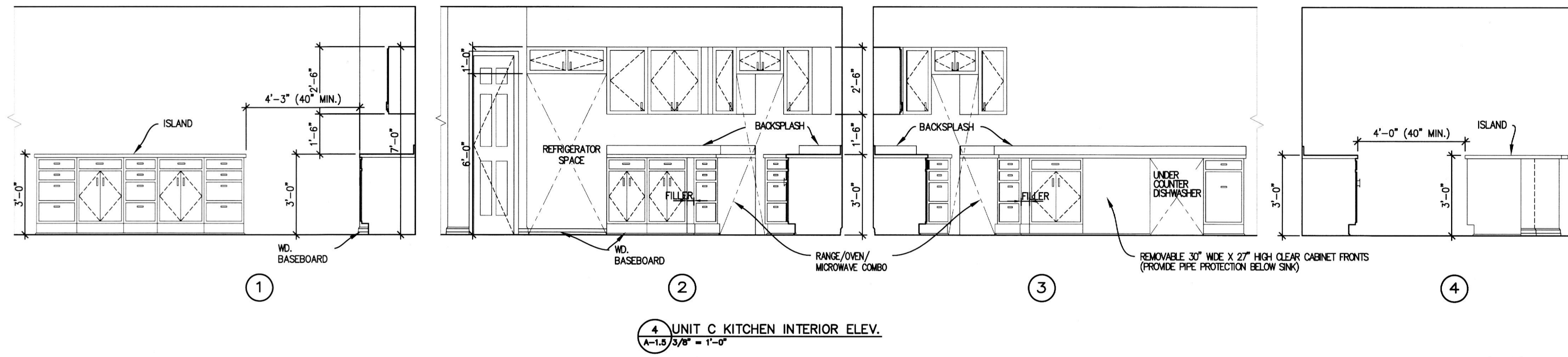
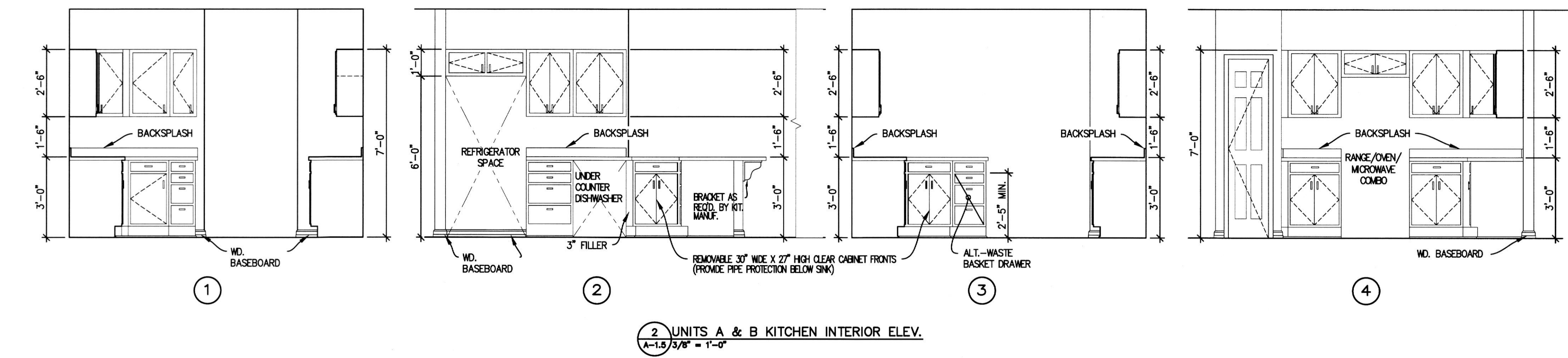
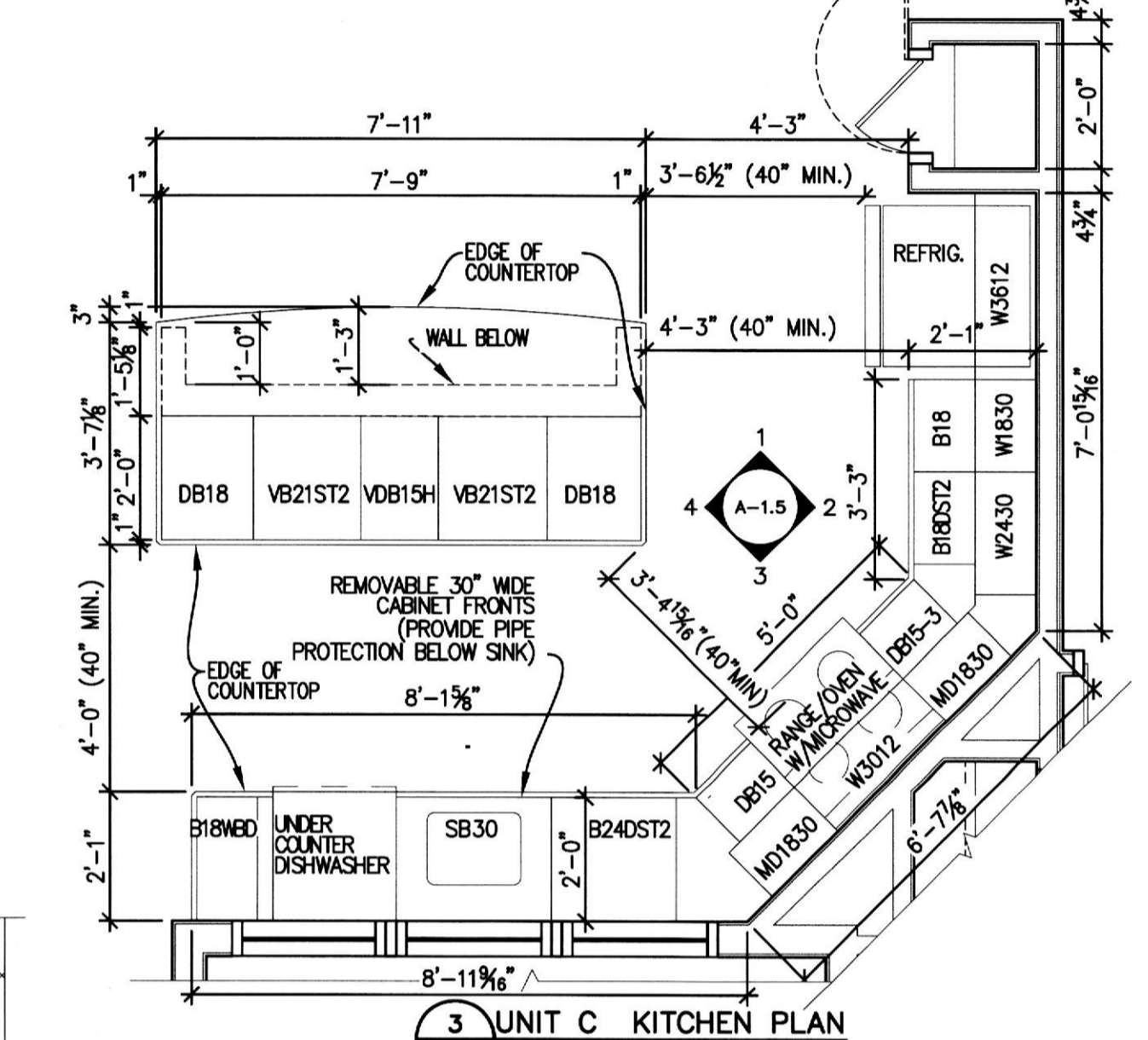
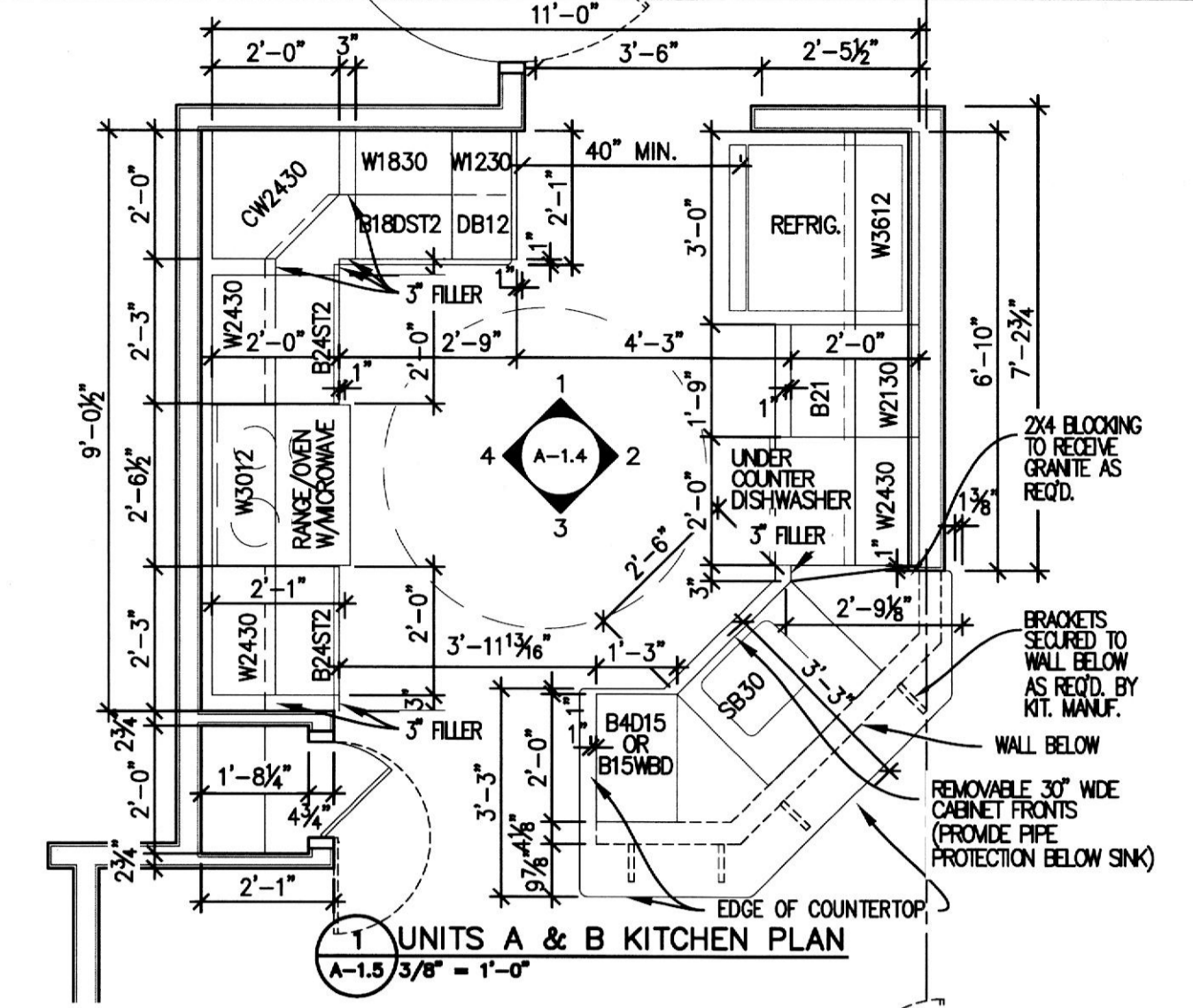
**CONTENT:**  
 DETAILED PLANS,  
 INTERIOR ELEVATIONS  
 & SCHEDULES

© 2014 J.T. FISHMAN & ASSOCIATES

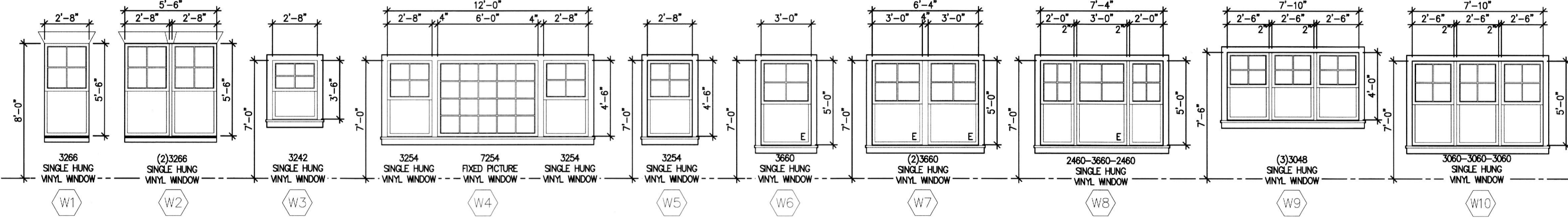
NO.	DATE	ISSUE
1	11-20-18	BALTO CO COMMENTS

DATE: 8-20-2018  
 SCALE: AS NOTED  
 PROJECT NO.: 150101

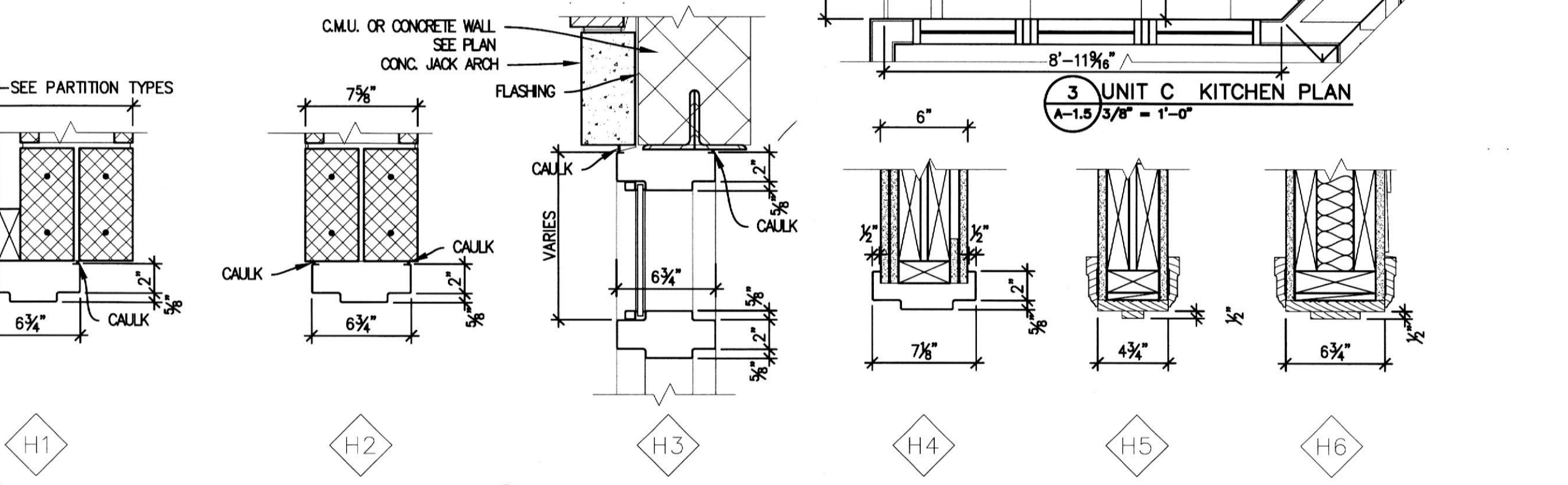
**A-1.5**  
 SHEET 8 OF 19



**WINDOW SCHEDULE**

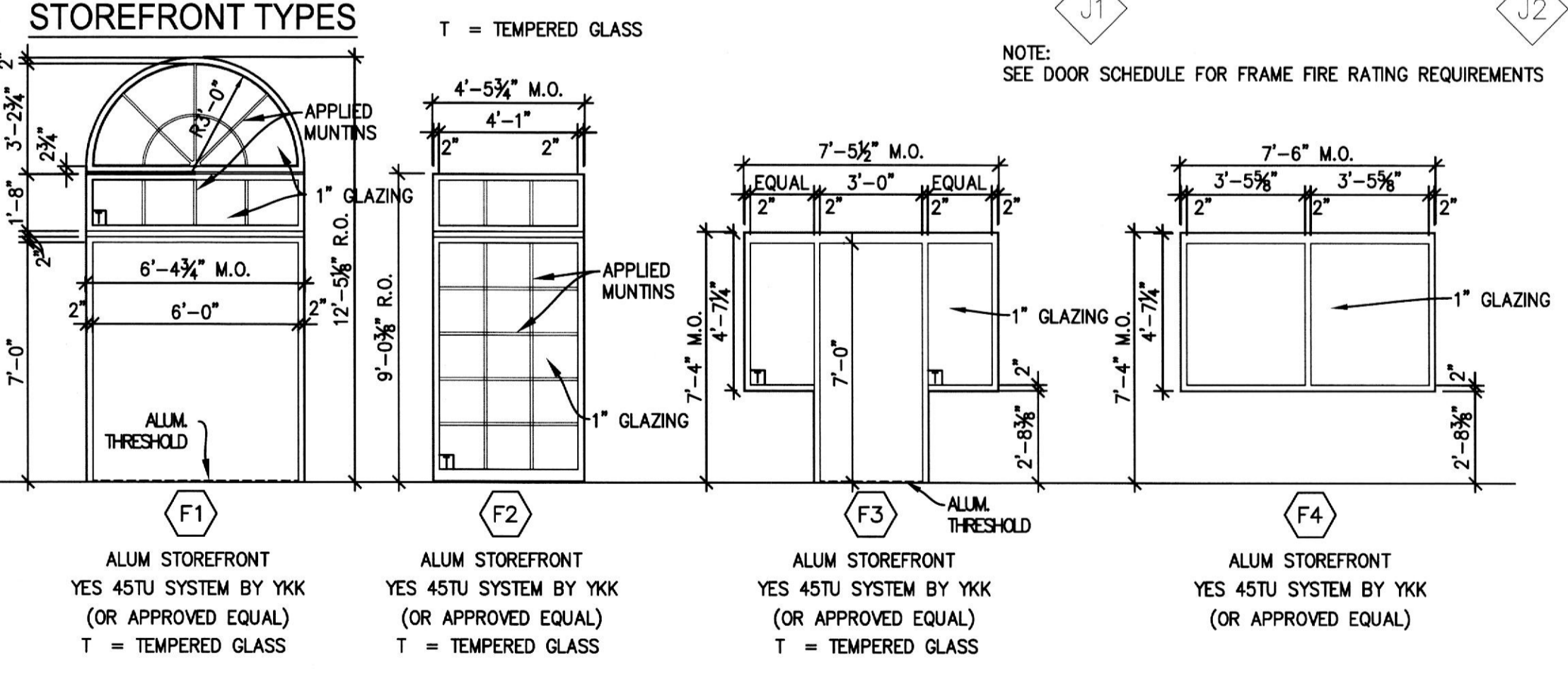
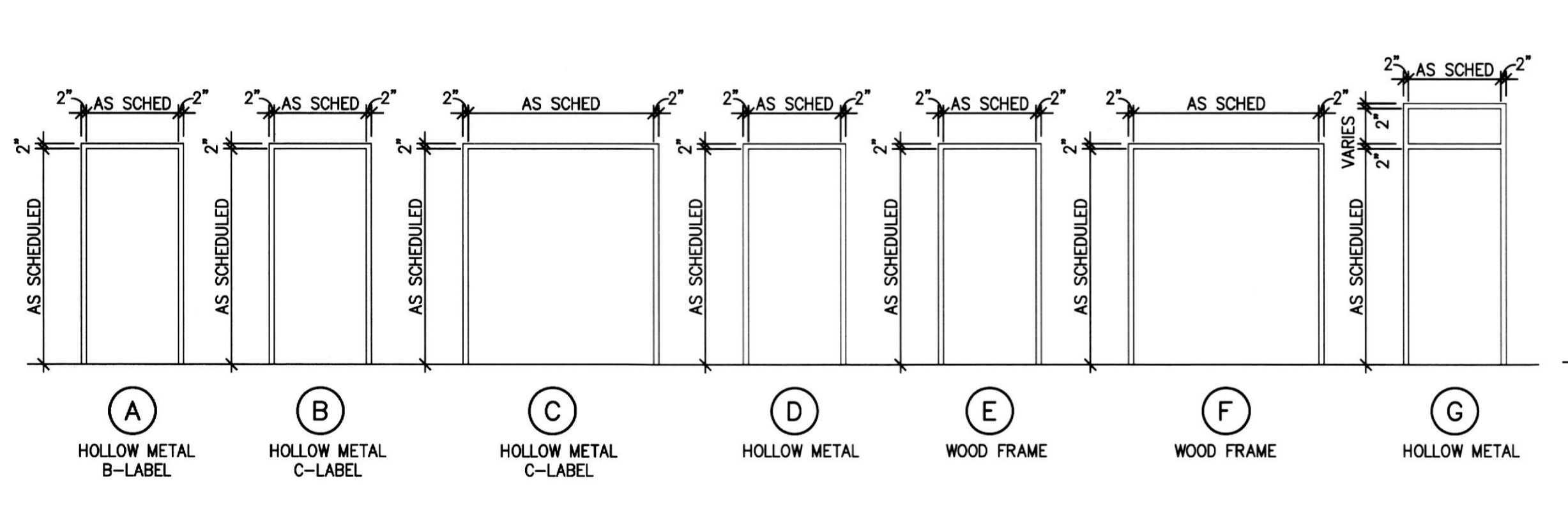


NOTE: INSTALL WINDOWS IN ACCORDANCE WITH MANUFACTURER'S INSTALLATION GUIDELINES AND RECOMMENDATIONS. ALL WINDOWS SHALL COMPLY WITH ALL APPLICABLE CODES AND FAIR HOUSING ACT GUIDELINES. UNITS MARKED 'E' = BASIC UNIT CLEAR OPENING SHALL EXCEED 20" IN WIDTH, 24" IN HEIGHT AND A MIN. OF 5.7 SQ. IN.

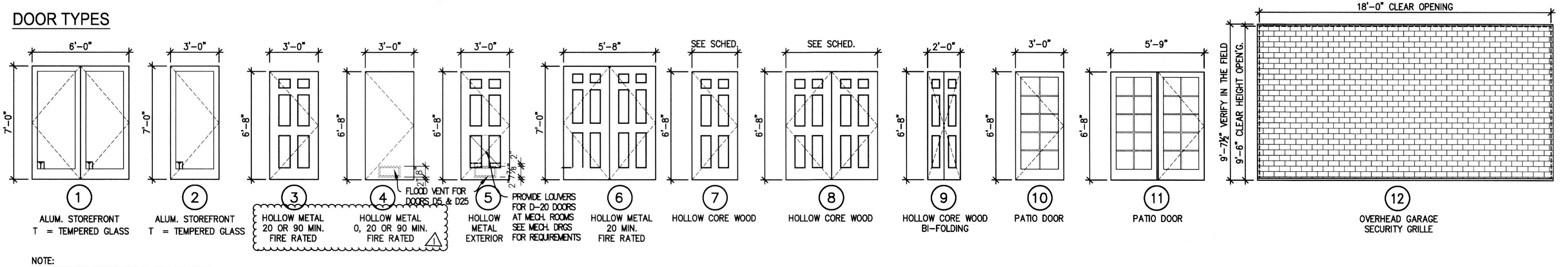


NOTE: SEE DOOR SCHEDULE FOR FRAME FIRE RATING REQUIREMENTS

**FRAME TYPES** NOTE: SEE DOOR SCHEDULE FOR FIRE-RATED FRAMES & GLAZING



NOTE: SEE DOOR SCHEDULE FOR FRAME FIRE RATING REQUIREMENTS



NOTE: ALL EXTERIOR DOORS SHALL BE INSULATED. FIRE-RATED GLAZING SHALL BE WIRED GLASS U.N.O.

**12 DOOR FRAME JAMB DETAILS**  
 A-1.5/1 1/2" = 1'-0"

NO.	SIZE	DOOR		TYPE		FRAME		DETAILS		FIRE RATING	REMARKS	
		W	H	MATL	FINISH	MATL	FINISH	HEAD	JAMB			
D-1	(2)36"W x 84"H	1 1/2"	1 1/2"	ALUM	FACT	F1	ALUM	FACT	-	-	ENTRANCE LOBBY TO STREET	
D-2	36"W x 84"H	1 1/2"	2	ALUM	FACT	F3	ALUM	FACT	-	-	ELEV. #2 LOBBY TO GARAGE	
D-3	36"W x 80"H	1 1/2"	3	HM	PTD	A	HM	PTD	H1	J1	90 MIN STAIRS #1 & #2	
D-4	36"W x 80"H	1 1/2"	3	HM	PTD	B	HM	PTD	H1	J1	20 MIN ENTRANCE LOBBY TO OFFICE & GARAGE	
D-5	36"W x 80"H	1 1/2"	5	HM	PTD	C	HM	PTD	H3	J3	EXTERIOR DR. @ STAIR #1; PROVIDE 16"X8" FLOOR VENT	
D-6	36"W x 80"H	1 1/2"	4	HM	PTD	B	HM	PTD	H2	J2	RES. STOR. & MECH. RMS. TO GARAGE	
D-7	36"W x 80"H	1 1/2"	5	HM	PTD	C	HM	PTD	H3	J3	EXTERIOR DR. @ GARAGE LEVEL	
D-8	36"W x 80"H	1 1/2"	3	HM	PTD	B	HM	PTD	H4	J4	20 MIN UTILITY CLOSET TO CORRIDOR	
D-9	(2)34"W x 84"H	1 1/2"	6	HM	PTD	C	HM	PTD	H4	J5	20 MIN FIRST FLOOR CORRIDOR TO LOBBY	
D-10	36"W x 80"H	1 1/2"	3	HM	PTD	D	HM	PTD	H4	J4	4	MULTI-PURPOSE TO LOBBY
D-11	(2)34"W x 80"H	1 1/2"	11	HM	FACT	-	WD	FACT	-	-	ELEV. LOBBY & MULTI-PURP. TO BALC.	
D-12	216"W x 114"H	-	12	ALUM	FACT	FACT	FACT	FACT	-	-	ROLL-UP GRILLE @ GARAGE ENTRANCE-FIELD MEASURED	
D-13	48"W x 90 1/2"H	-	13	GALV STL	FACT	FACT	FACT	FACT	-	-	GARAGE GATES AT WEST END-FIELD MEASURED	
D-14	36"W x 80"H	1 1/2"	3	HM	PTD	B	HM	PTD	H4	J4	20 MIN TYPICAL UNIT ENTRANCE DOOR	
D-15	36"W x 80"H	1 1/2"	7	HCW	PTD	E	WD	PTD	H5	J6	TYPICAL UNIT INTERIOR DOOR	
D-16	24"W x 80"H	1 1/2"	9	HCW	PTD	-	-	-	-	-	LINEN CLOSETS	
D-17	24"W x 80"H	1 1/2"	7	HCW	PTD	E	WD	PTD	H5	J6	UNIT INTERIOR DOOR	
D-18	18"W x 80"H	1 1/2"	7	HCW	PTD	E	WD	PTD	H5	J6	PANTRY	
D-19	(2)30"W x 80"H	1 1/2"	8	HCW	PTD	F	WD	PTD	H5	J6	UNIT INTERIOR DOOR	
D-20	36"W x 80"H	1 1/2"	5	HM	PTD	E	WD	PTD	H6	J7	EXTERIOR DOOR AT MECH. RM; PROVIDE LOUVERS PER MECH. REQ.	
D-21	36"W x 80"H	1 1/2"	10	HM	PTD	-	WD	FACT	-	-	PATIO DOOR-BREAKFAST TO BALCONY	
D-22	(2)34"W x 80"H	1 1/2"	11	HM	PTD	-	WD	FACT	-	-	PATIO DOOR-SITTING RM. TO BALC. @ UNIT A1	
D-23	(2)24"W x 80"H	1 1/2"	8	HCW	PTD	F	WD	PTD	H5	J6	UNIT INTERIOR DOOR	
D-24	36"W x 80"H	1 1/2"	4	HM	PTD	A	HM	PTD	H1	J1	90 MIN STAIRS #2 @ GARAGE LEVEL	
D-25	36"W x 80"H	1 1/2"	4	HM	PTD	B	HM	PTD	H2	J2	20 MIN RESIDENT STORAGE #1; PROVIDE 16"X8" FLOOR VENT	

KEY:  
 HM=HOLLOW METAL  
 THK=THICKNESS  
 FACT=FACTORY FINISH  
 SCW=SOLID CORE WOOD  
 ALUM=ALUMINIUM  
 GALV STL=GALVANIZED STEEL  
 PTD=PAINTED  
 WD=WOOD