

8/20/18

**J. T. FISHMAN & ASSOCIATES**  
ARCHITECTS-PLANNERS  
6 DORSET HILL COURT  
OWINGS MILLS, MARYLAND 21117  
(410) 581-3600 FAX (410) 286-1572

PROFESSIONAL CERTIFICATION  
I HEREBY CERTIFY THAT THESE  
DRAWINGS WERE PREPARED OR  
SUPERVISED BY ME, AND THAT I AM  
DULY LICENSED AS AN ARCHITECT UNDER THE LAWS OF  
THE STATE OF MARYLAND.  
LICENSE # 5425

# GALLOWAY CREEK CONDOMINIUMS

1414 BURKE ROAD  
BOWLEYS QUARTERS-GALLOWAY CREEK  
BALTIMORE COUNTY, MARYLAND

THESE DRAWINGS ARE THE PROPERTY OF  
J.T. FISHMAN & ASSOCIATES. UNAUTHORIZED  
REPRODUCTION FOR ANY PURPOSE IS AN  
INFRINGEMENT UNDER COPYRIGHT LAWS. VIOLATORS  
WILL BE SUBJECT TO PROSECUTION BY THE FULLST  
EXTENT OF THE LAW.  
WRITTEN DIMENSIONS ON THESE DRAWINGS SHALL  
TAKE PRECEDENCE OVER SCALE DIMENSIONS.  
CONTRACTORS SHALL VERIFY AND BE RESPONSIBLE  
FOR ALL DIMENSIONS AND CONDITIONS ON THE JOB.  
THIS OFFICE MUST BE NOTIFIED OF ANY VARIATION  
FROM THE DIMENSIONS AND CONDITIONS SHOWN BY  
THESE DRAWINGS.

**CONTENT:**  
REFLECTED CEILING  
PLANS

© 2018 J.T. FISHMAN & ASSOCIATES

NO.	DATE	ISSUE

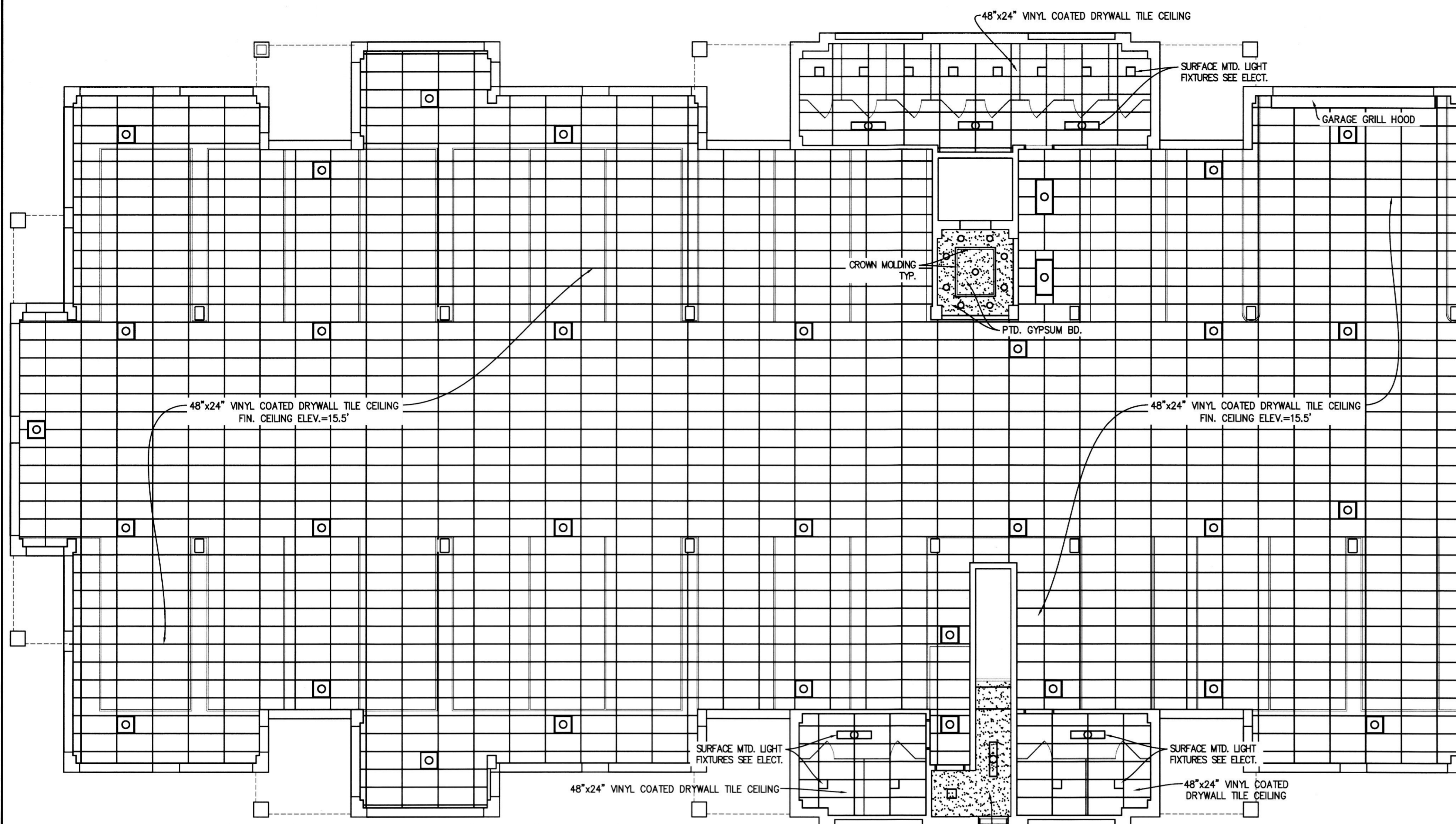
DATE: 8-20-2018

SCALE: AS NOTED

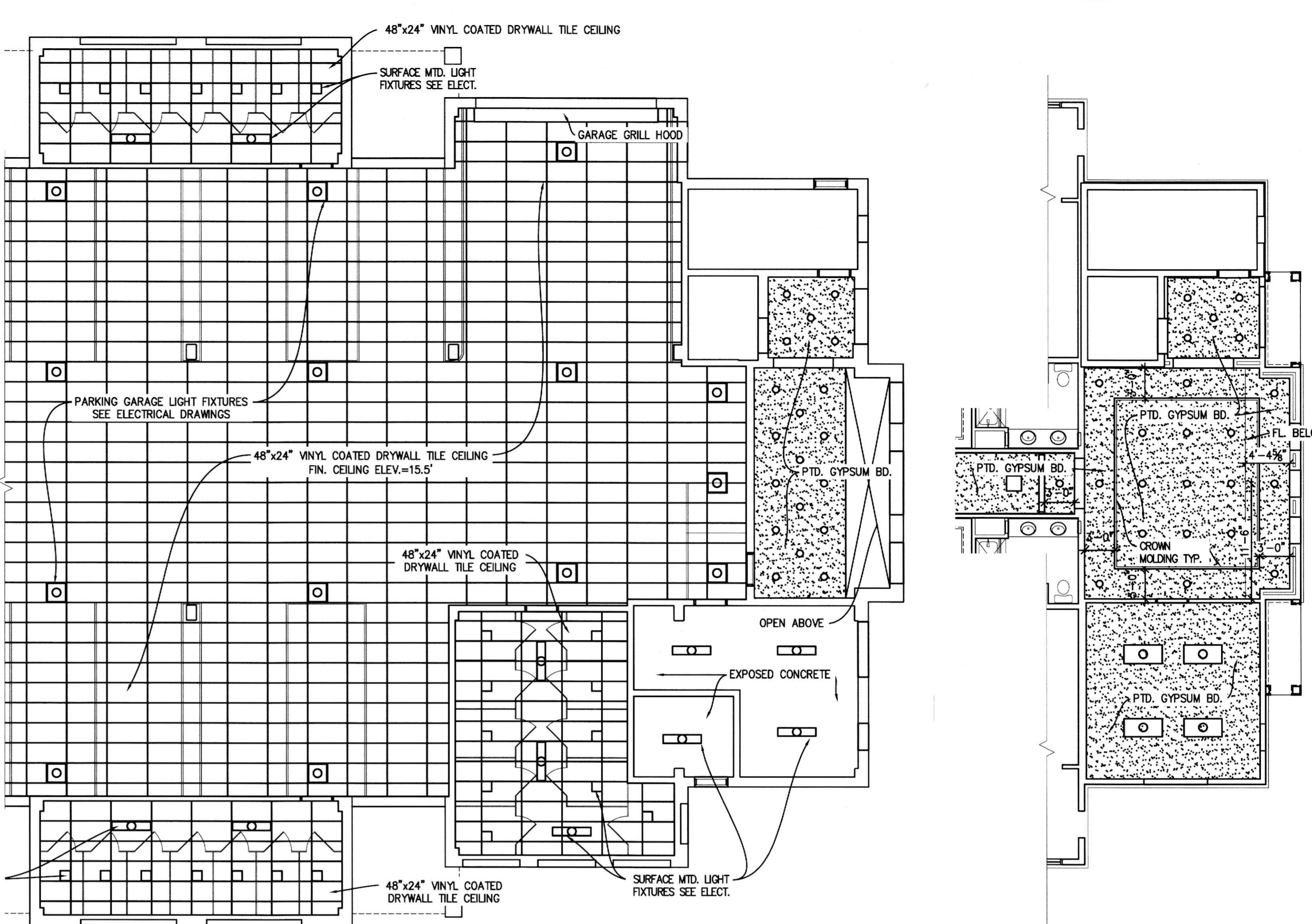
PROJECT NO.: 150101

# A-1.8

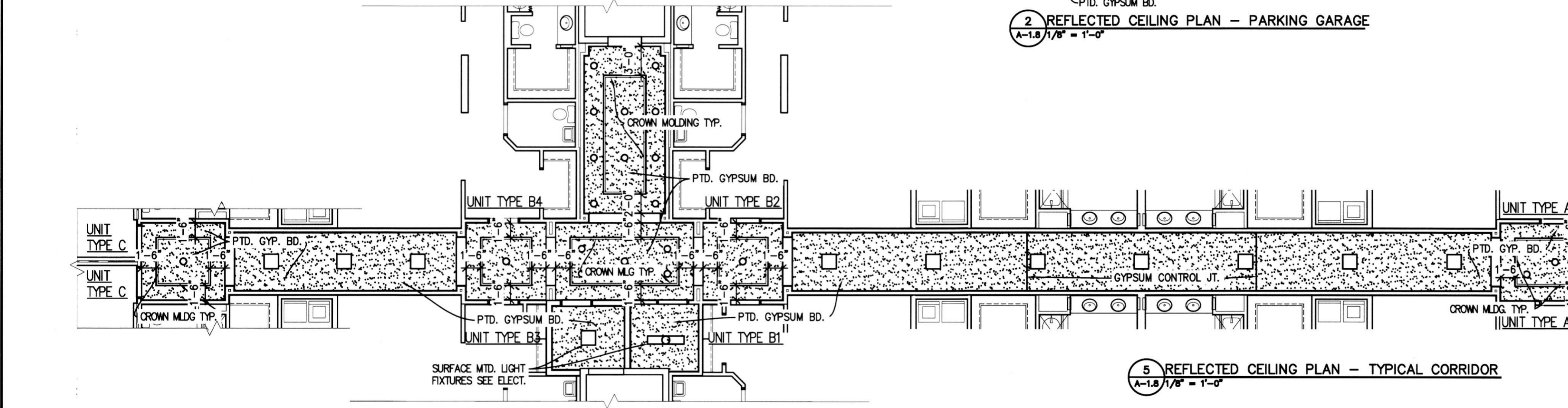
SHEET 11 OF 19



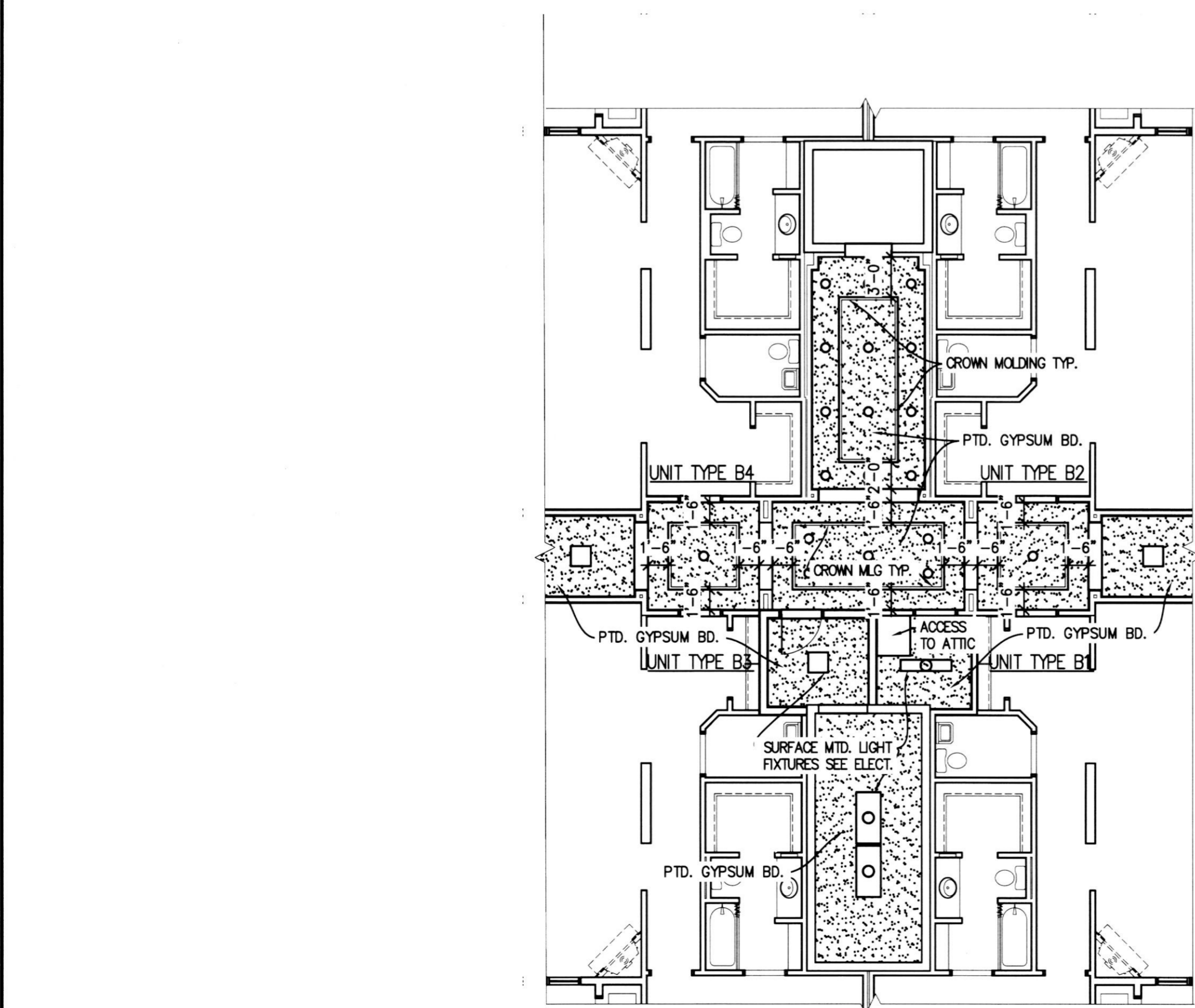
2 REFLECTED CEILING PLAN - PARKING GARAGE  
A-1.8 1/8" = 1'-0"



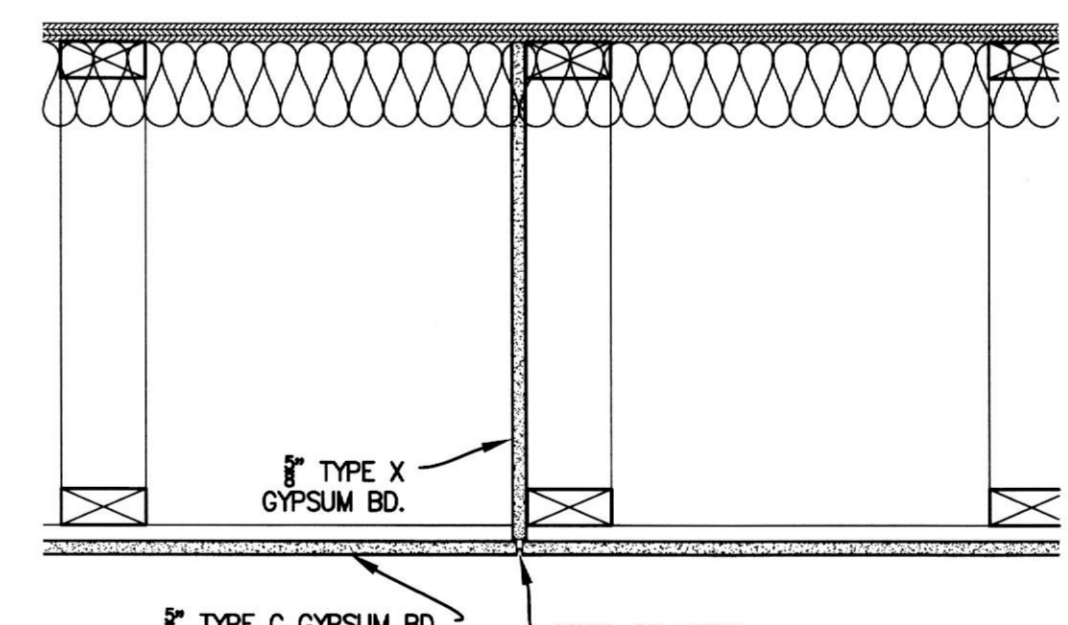
1 REFLECTED CEILING PLAN - PARKING GARAGE LEVEL  
A-1.8 1/8" = 1'-0"



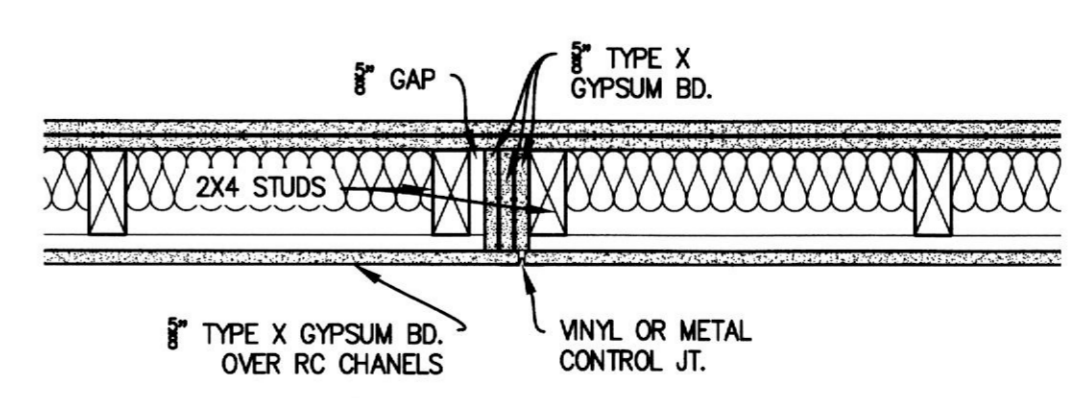
5 REFLECTED CEILING PLAN - TYPICAL CORRIDOR  
A-1.8 1/8" = 1'-0"



6 REFLECTED CEILING PLAN - THIRD FLOOR  
A-1.8 1/8" = 1'-0"



8 GYPSUM CEILING CONTROL JOINT DETAIL  
A-1.8 1/2" = 1'-0"



9 GYPSUM WALL CONTROL JOINT DETAIL  
A-1.8 1/2" = 1'-0"

3 REFLECTED CEILING PLAN - FIRST FLOOR LOBBY  
A-1.8 1/8" = 1'-0"

4 REFLECTED CEILING PLAN - SECOND FLOOR LOBBY  
A-1.8 1/8" = 1'-0"

8 REFLECTED CEILING PLAN - THIRD FLOOR LOBBY  
A-1.8 1/8" = 1'-0"