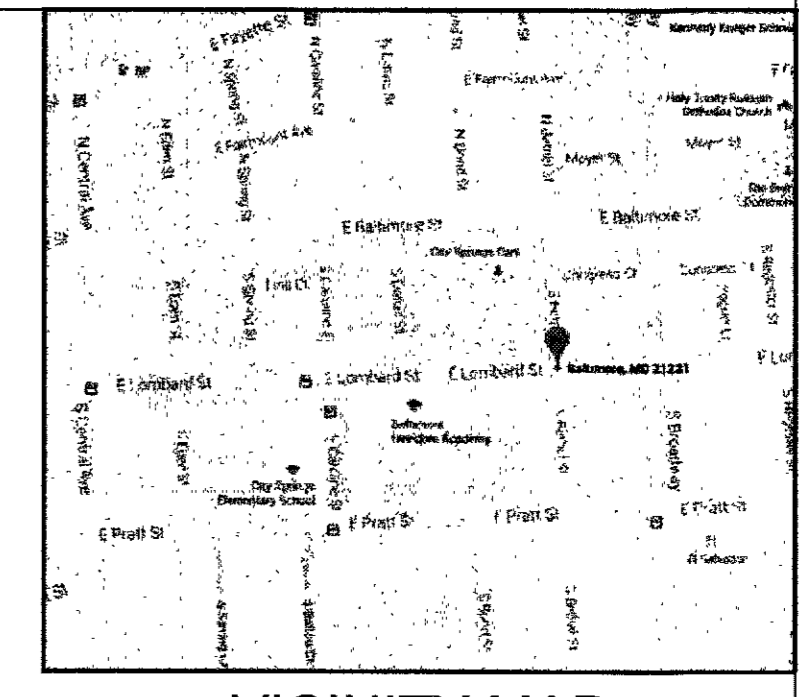
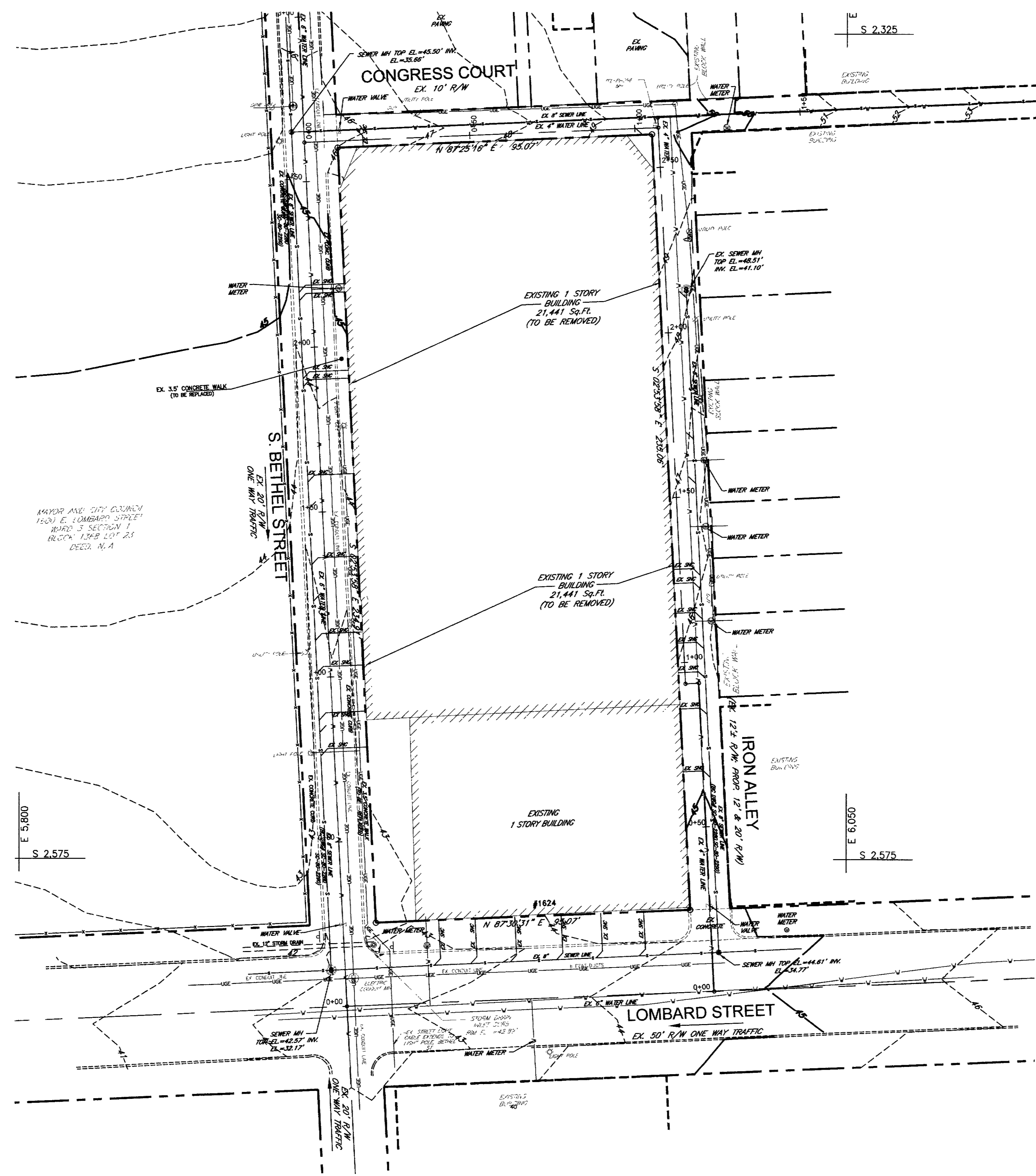


1 2 3 4 5 6

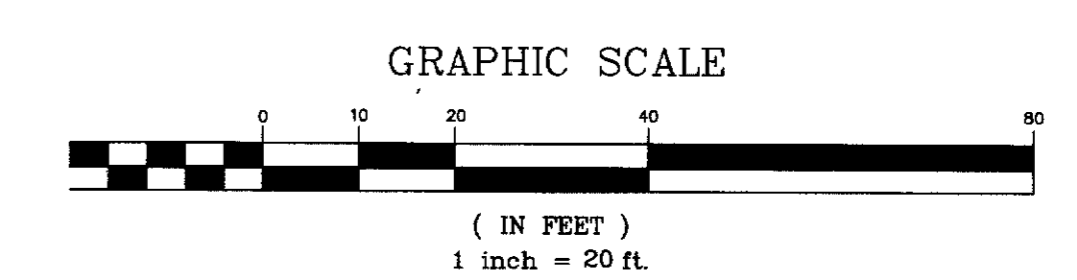
A  
B  
C  
D  
E



VICINITY MAP

EXISTING CONDITION PLAN LEGEND

- ⊙ EX. SEWER MANHOLE
- ⊙ EX. WATER MANHOLE
- ⊙ EX. WATER METER
- ⊙ EX. STORM DRAIN MANHOLE
- ⊙ EX. TELEPHONE MANHOLE
- ⊙ EX. ELECTRICAL MANHOLE
- ⊙ EX. GAS MANHOLE
- ⊙ EX. FIRE HYDRANT
- ⊙ EX. SIGN
- ⊙ EX. LIGHT POLE
- ⊙ EX. GAS VALVE
- ⊙ EX. YARD GRATE-INLET
- ⊙ EX. WATER VALVE
- ⊙ EX. WATER METER
- ⊙ EX. TREE
- ⊙ EX. TRAVERSE
- — — — — PROPERTY LINE
- — — — — EXISTING CONTOUR
- — — — — EX. WATER LINE
- — — — — EX. GAS LINE
- — — — — EX. STORM DRAIN LINE
- — — — — EX. SEWER LINE
- — — — — EX. UNDERGROUND TELEPHONE LINE
- — — — — EX. UNDERGROUND ELECTRIC LINE
- — — — — EX. OVERHEAD ELECTRIC LINE
- — — — — EX. FENCE



**ESD # 7121**

Professional Certification: I hereby certify that these documents were prepared or approved by me, and that I am a duly licensed professional engineer under the laws of the State of Maryland.  
License No. 21718, Expiration Date: 2017-09-16

Architect  
**Architects & Design Consultants**  
 (434)260-1292  
 ftemelisso.fitado@gmail.com  
 Civil / Structural  
**M.A Design Group LLC**  
**Consulting Engineers**  
 1705 Chester Mill Road  
 Silver Spring, MD 20906

MEP  
**SiTa Engineering,**  
 1334 9th Street,  
 NW Suite 206  
 Washington DC, 20001

Owner / Client  
**Herena USA, LLC**  
 210 E. Lexington Street  
 Baltimore, Maryland 21202

Herena USA  
 E. Lombard Street  
 1622-1634 Lombard Street  
 922 S. Bethel Street  
 Baltimore, MD 21212

REV	DESCRIPTION	DATE
4	SWM-ES	05/20/2017
3	SWM-ES	09/29/2016
2	SWM-ES	08/15/2016
1	BID-SET	02/5/2016

REVISION HISTORY



Date: 02/5/2016  
 Project # 1501.01

EXISTING CONDITION

C-1.0