

# How to print an enlarged section of map

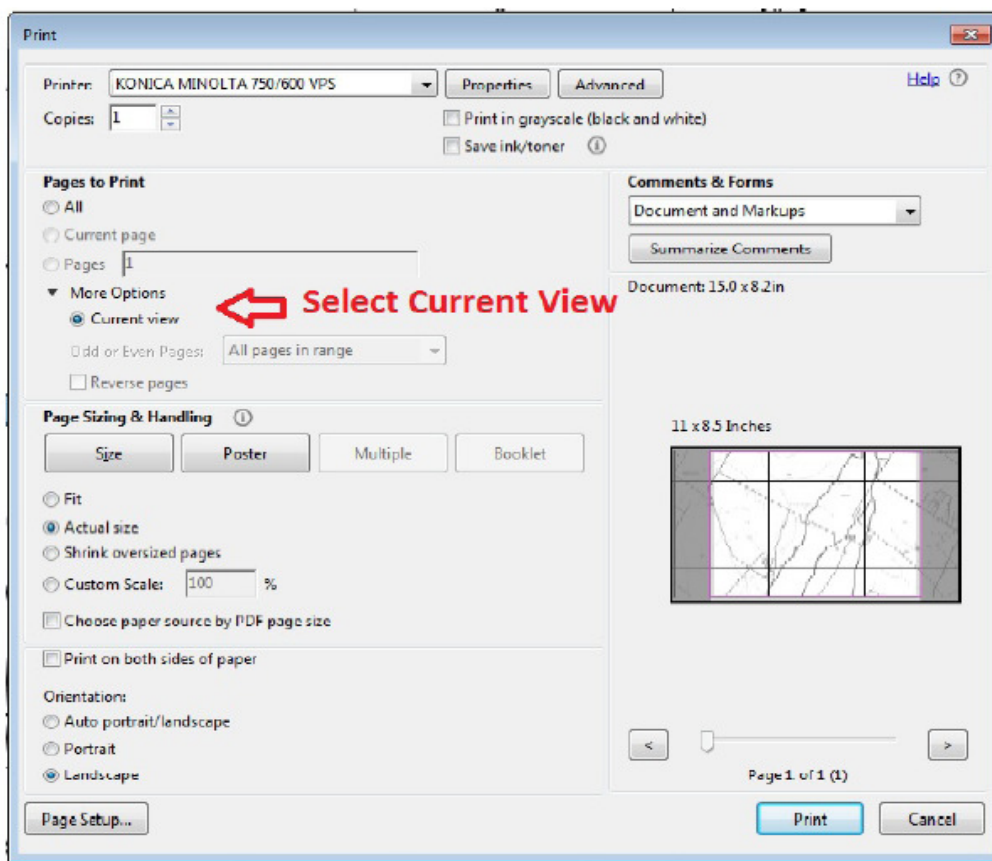
SpecPrint post maps in the PDF format on our website. Web browsers will display the maps naturally however we recommend downloading the maps if you want to print an enlarged section of the map. These instructions require you to have Adobe Acrobat Reader installed which is a free program you can download from <https://get.adobe.com/reader>.

Instructions:

1. With the map open click the download button to download the map to your computer.



2. Open the PDF file in Acrobat Reader.
3. Zoom into the section that you would like to print
4. Goto file and select print
5. The print options will open
6. Under the section for Pages to Print there is a drop down menu for “More Options” that you will have to click to expand
7. Select the current view radio box, this will tell the program to print what you're zoomed into, as shown in the preview.
8. Optional: You may want to change your orientation to Landscape.



For Linux:

- 1.) depress & hold the shift key and hit print screen  
mouse pointer will change to a plus sign
- 2.) place pointer plus sign to the corner of the image you want and drag to caddy corner to cover desired area to crop.

Once you release a dialog box will appear with the option to save to you clipboard for further pasting or to save you image as a file in a folder.

hit the ESC key to start over